

Naperville



Plug Into Choice

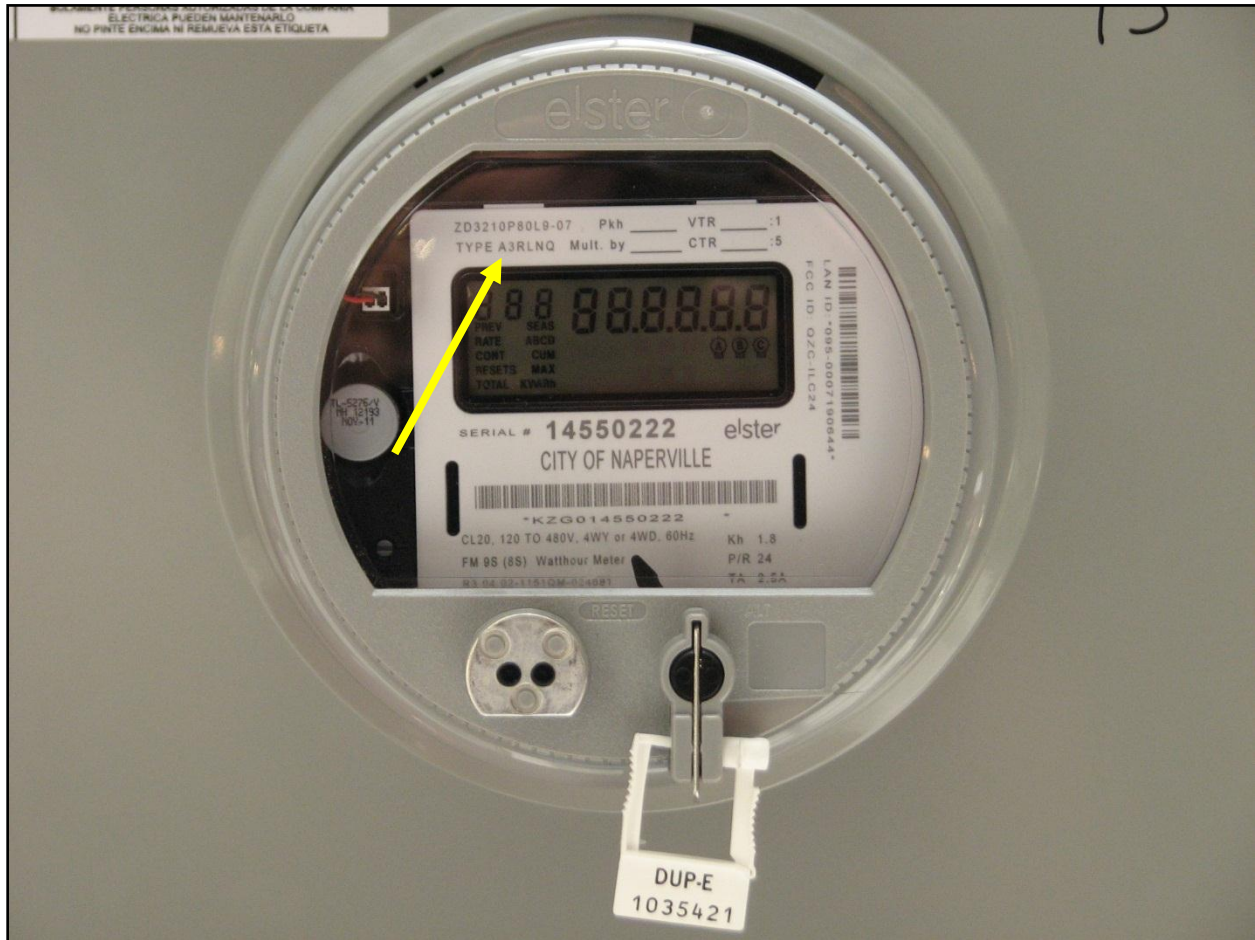
## Naperville Smart Grid Initiative Reading Commercial and Industrial (C&I) Meters

Quick User Guide

Created May 2012

### Typical Commercial and Industrial (C&I) Meter

Elster brand, Type “A3RLNQ”, as indicated by arrow





## Naperville Smart Grid Initiative

### Reading Commercial and Industrial (C&I) Meters

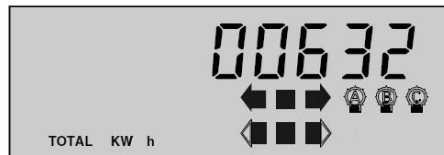
#### Quick User Guide

Created May 2012

#### How do I read my meter for electricity usage?

Your meter displays different screens that repeat in a sequential order. Carefully watch the display screen until the screen displays kWh and kW.

Electricity usage is measured in kilowatt hours (kWh), which is a unit of energy. Your meter is continuously recording electricity usage from the moment of installation; to find your current total electricity usage, look for a number display accompanied by TOTAL kWh (see example below).



**Energy Usage measured in kilowatt hours (kWh)**

- The total energy usage in the graphic above is 632 kWh.
- To see how much electricity used in, for example, one week, write down this number at the beginning of the week and then subtract it from the number displayed at the end of the week.
- Your bill is calculated by multiplying your total electricity usage (for a given billing cycle) by the rate per kilowatt hour (plus applicable taxes and service fees).

#### How do I read my meter for maximum demand?

Demand is the rate at which energy is used and is measured in kilowatts (kW), which is a unit of power. To find your maximum 30-minute demand within the last 30 days, look for a number display accompanied by MAX kW. The max demand in the example below is 1.53 kW.



**Demand measured in kilowatts (kW)**

Naperville



Plug Into Choice

**Naperville Smart Grid Initiative**  
**Reading Commercial and Industrial (C&I) Meters**  
**Quick User Guide**  
**Created May 2012**

**Additional displays found on your C&I Meter**

Commercial and industrial Residential meters have additional display types that repeat in a predetermined sequence.

**Beyond energy usage (kWh) and maximum demand (kW) as shown on the previous page, all other meter displays are used for diagnostic purposes by utility technicians and are not applicable to basic residential customer needs.**

Displays may vary based on specific meter model, service, or meter conditions. Displays may change without notice based on utility modifications.

For more information on the meter displays above or questions on how to read your meter, please contact the City of Naperville Finance Department at 630-420-6059.