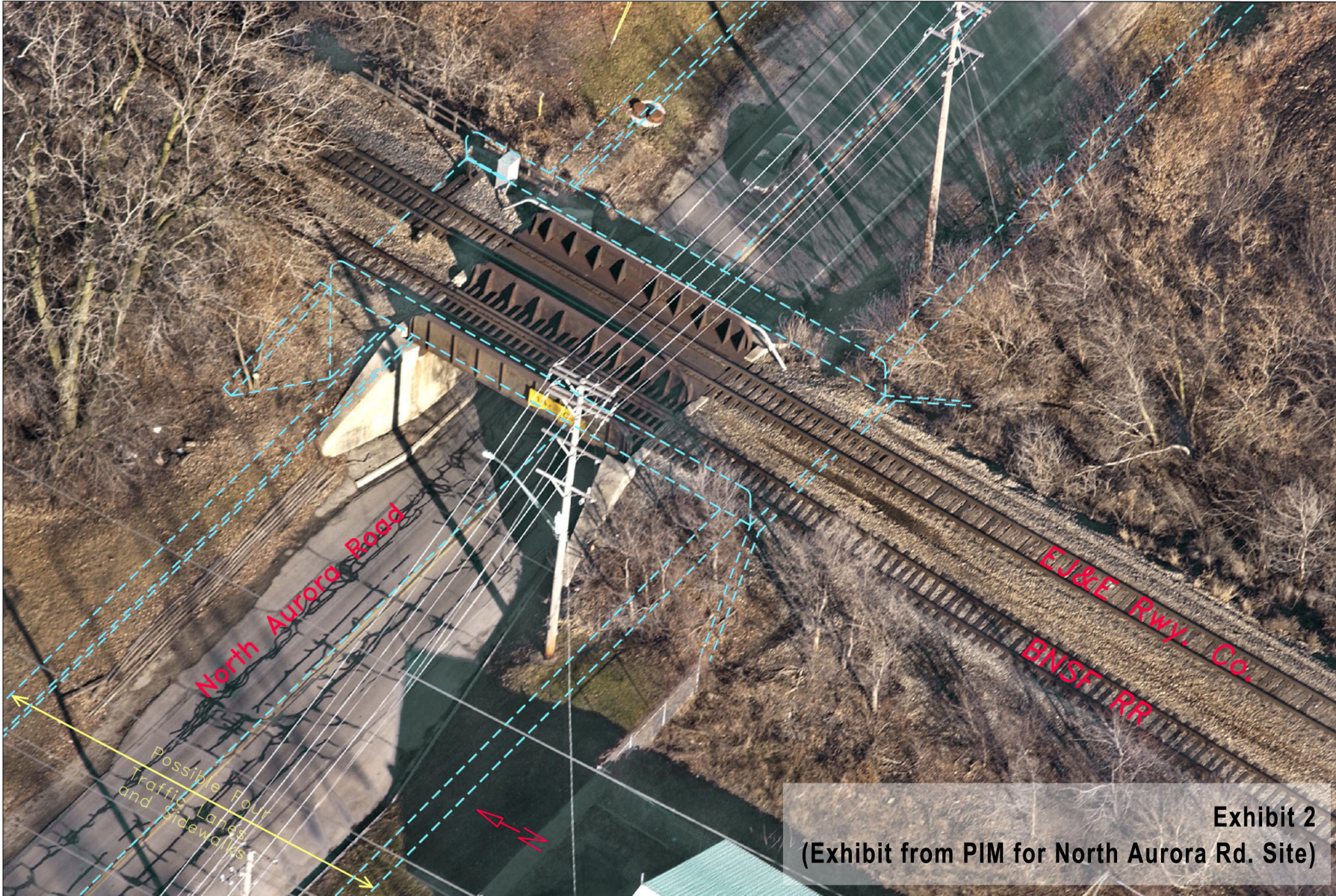


# NORTH AURORA ROAD AT THE EJ&E RWY (Exhibit from PIM)



**EXISTING CONDITIONS:**

- \* Grade Separated 2-Lane Crossing (Underpass)

**POSSIBLE ALTERNATIVES:**

- \* No Change
- \* At-grade Crossing of a Widened Roadway
- \* Highway Bridge - Widened Roadway Over Tracks
- \* Longer Railroad Bridge - Widened Roadway Under Tracks

**ISSUES / CONCERNS / FEATURES:**

- \* Two Railroads Involved
- \* Adjacent Power Lines
- \* Maintenance of Rail / Interchange Traffic
- \* Maintenance of Highway Traffic
- \* Accommodating Underpass Drainage
- \* Accommodating Bicycles

**TRAINS PER DAY**

- \* 12-16 Trains Per Day on east track
- \* 2-3 Trains Per Week on West track
- \* Possible Future Commuter Trains

**TRAFFIC COUNTS**

- \* Estimated Future Vehicle Traffic (2022) = 14,000

**Exhibit 2**  
(Exhibit from PIM for North Aurora Rd. Site)