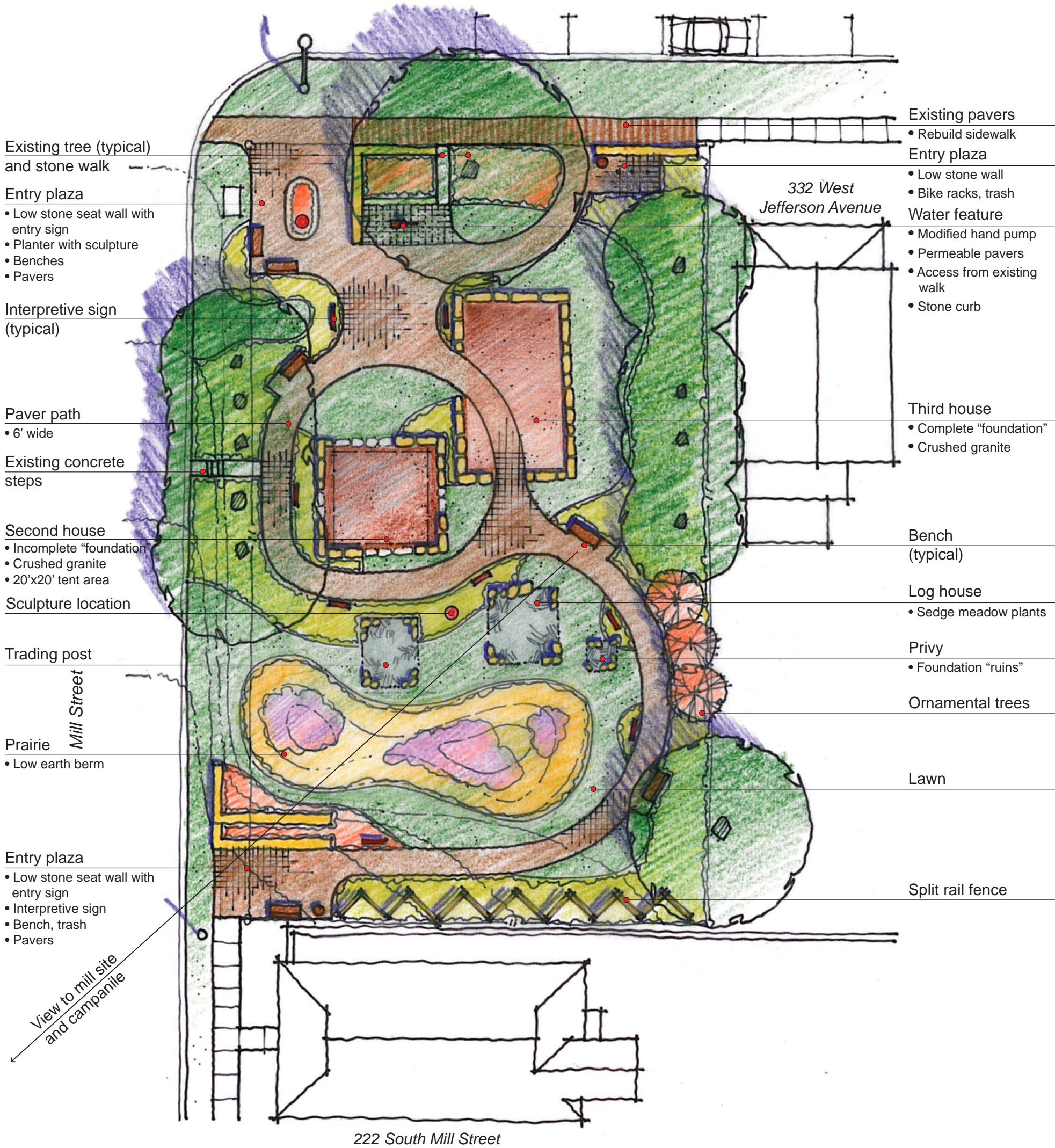


West Jefferson Avenue



Existing tree (typical) and stone walk

Entry plaza
 • Low stone seat wall with entry sign
 • Planter with sculpture
 • Benches
 • Pavers

Interpretive sign (typical)

Paver path
 • 6' wide

Existing concrete steps

Second house
 • Incomplete "foundation"
 • Crushed granite
 • 20'x20' tent area

Sculpture location

Trading post

Mill Street
 Prairie
 • Low earth berm

Entry plaza
 • Low stone seat wall with entry sign
 • Interpretive sign
 • Bench, trash
 • Pavers

View to mill site and campanile

Existing pavers
 • Rebuild sidewalk

Entry plaza
 • Low stone wall
 • Bike racks, trash

Water feature
 • Modified hand pump
 • Permeable pavers
 • Access from existing walk
 • Stone curb

Third house
 • Complete "foundation"
 • Crushed granite

Bench (typical)

Log house
 • Sedge meadow plants

Privy
 • Foundation "ruins"

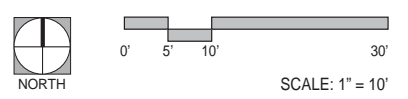
Ornamental trees

Lawn

Split rail fence

332 West Jefferson Avenue

222 South Mill Street



PREPARED FOR:
 The City of Naperville and
 Naperville Heritage Society

IN ASSOCIATION WITH:
 Engineering Resource
 Associates, Inc.

Revised Concept

Joseph Naper Homestead

Naperville, Illinois



ISSUE DATE: October 1, 2009
 PROJECT NUMBER: 06-0124-027-01-08
 All drawings are preliminary and subject to change.
 © 2009 Hitchcock Design Group