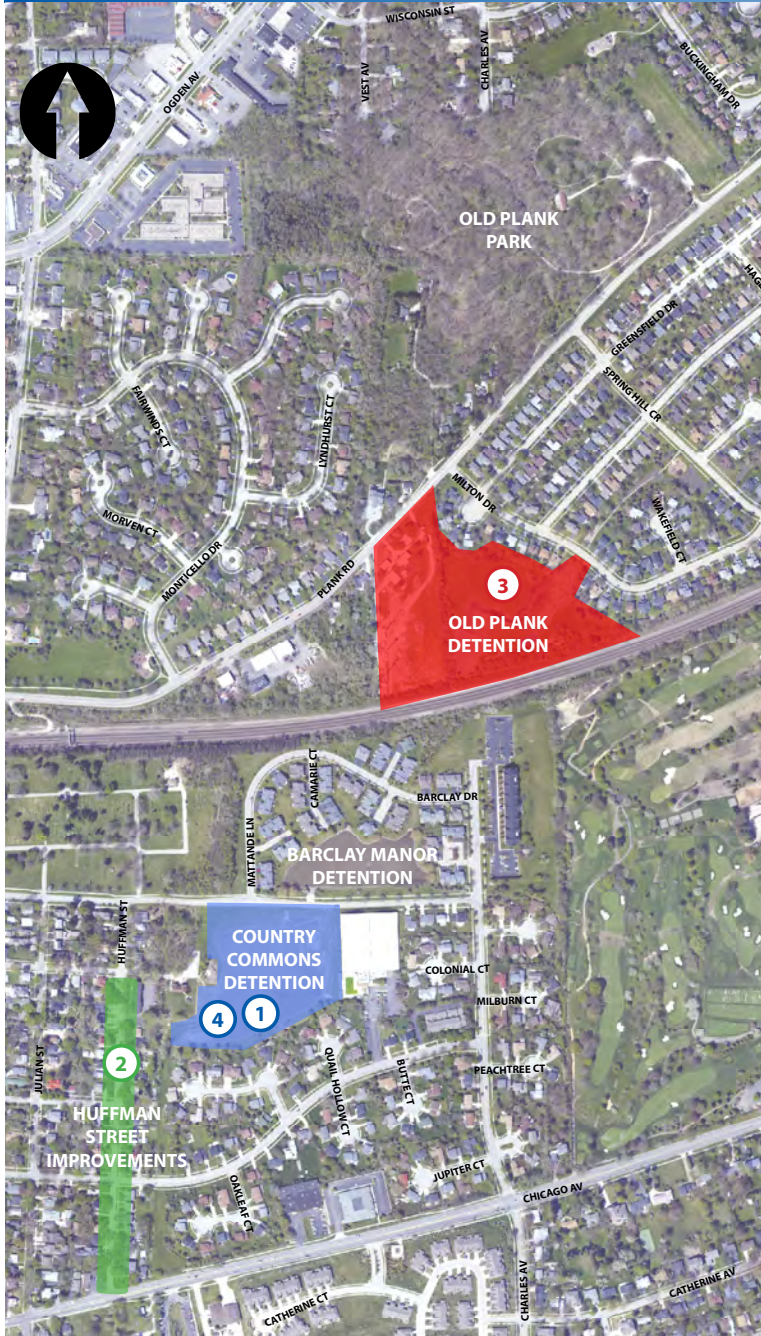


# Steeple Run Watershed Project



## 1 Country Commons (Completed in 2006)

**Expansion of the Country Commons Detention Basin:** The work increased the stormwater storage capacity in the Country Commons basin.

## 2 Huffman Street (Completed in 2010)

**Construction of a Bypass Sewer:** Work included the construction of large sewer pipes on Huffman Street, which will drain stormwater from the Country Commons basin to East Greens Park.

## 3 Old Plank (Under Construction)

- Increased Capacity of Detention Areas
- Replaced Deteriorated Storm Sewer Sections
- Playground Relocation

Major work is scheduled for Completion in Fall 2011

## 4 Country Commons Flood Control Wall

**Installation of a New Floodwall and Connection to the Huffman Street Storm Sewer System:** Work will include reconstruction of the embankment, construction of a new flood wall, and connection to the Huffman Street storm sewer system.

Major work is scheduled for Completion Summer 2012