

Places to Visit by Bike

Centennial Beach
500 W. Jackson Ave. (C2)
Centennial Beach is the city's central swimming facility.

Central Park
104 E. Benton Ave. (C2)
This park features the Community Concert Center where Naperville's own municipal band performs free concerts.

Commissioners Park
3704 111th St. (A6)
This sports complex offers football and soccer fields and an in-line skating rink.

DuPage Children's Museum
301 N. Washington St. (C2)
This state-of-the-art museum is geared towards young children and their families.

DuPage River Sports Complex
2807 S. Washington St. (D5)
This park includes basketball and tennis courts and soccer and softball fields.

Frontier Sports Complex
3380 Cedar Glade Dr. (B5)
A skateboard facility, playground, basketball, bocce ball, and soccer and softball fields are available at this park.



Knoch Knolls Nature Center

Forest Preserves

- Greene Valley (E4)
- Herrick Lake (D1)
- McDowell Grove (B2)
- Springbrook Prairie (C4)

Knoch Knolls Nature Center
320 Knoch Knolls Rd. (D5)
Visitors are invited to explore the fascinating DuPage River and its branches that teem with life of all kinds.

Naper Settlement
523 S. Webster St. (C3)
This living history museum tells the story of daily life in Naperville as it has changed from a simple frontier outpost to a bustling turn-of-the-century community.

Naperville Municipal Center
400 S. Eagle St. (C2)

Naperville Public Libraries

- 95th Street Library
3015 Cedar Glade Dr. (B5)
- Naper Boulevard Library
2035 S. Naper Blvd. (D4)
- Nichols Library
200 W. Jefferson St. (C2)

Nike Sports Complex
288 W. Diehl Rd. (C1)
This sports facility offers soccer and softball fields and various athletic activities.

Public Transit

Take your bike along for the ride as you commute via public transit. Metra and Pace offer several options to accommodate bikes.

Metra's Bikes on Trains program enables cyclists to bring their standard-form bicycles on board trains during weekday off-peak hours and on weekends. Five bicycles are allowed in the priority seating area in each accessible diesel rail car; two in each electric rail car. There is no additional charge to your Metra fare to take a bicycle on board the train.

Bicycle parking is available at both the downtown Naperville Train Station and Route 59 Train Station.

Pace buses are equipped with bike racks that are attached to the front

bumper of the buses. The racks remain folded vertically against the bus when not in use. The light-weight rack pulls down into a horizontal position to carry two bikes, which are easily secured by the bike riders. The tires fit into slots, while a spring-loaded support arm is pulled over the front tire. The bikes sit across the front of the bus, and the process of securing or removing a bike takes only seconds. Riders use the bike racks for free.

Pace operates more than 200 bus routes throughout Chicago's suburbs, making connections to hundreds of employment sites, shopping centers, recreational areas and bicycle paths.

For more information on commuting with a bike on Metra or Pace, visit www.metra.com or www.pacebus.com.



Metra
The way to really fly.



pace
A Fresh Approach To Public Transportation

Resources

Naperville strives to be a city where bicycling is a viable transportation option for recreation, school, commuting, shopping and fitness trips. Many great bicycle facilities are in place throughout the city; but to achieve this goal, Naperville's bikeway system continues to evolve. Regional shared use trails, such as the DuPage River Trail, form the spine of the bikeway system. Plans exist to extend trails throughout the city and to designate and construct on-and off-street bikeways that will feed into regional trails and serve key destinations.

For more information about biking in Naperville, visit:
www.naperville.il.us
www.napervilleparks.org

For more information about biking in the region, visit:
www.dupageco.org/bikeways
www.dupageforest.com
www.reconnectwithnature.com

Guidelines

Safety Tips • Bike Laws • Regulations

Ride Locally

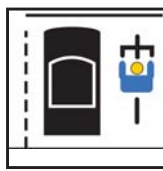
Use your bicycle to replace local vehicle trips when possible. You will not only save money on gasoline and improve your physical fitness, but will also help your community and the environment by reducing traffic congestion. Ride locally, ride often!



DuPage River Trail

"Every person riding a bicycle upon a highway shall be granted all of the rights and shall be subject to all of the duties applicable to the driver of a vehicle . . ."

Illinois Vehicle Code 625 ILCS 5/Section 11-1502



Obey Traffic Laws and Signals

Bicyclists must operate their bicycles like drivers of motor vehicles. Riders should go where the lane goes. Do not turn left from the right lane or go straight in a lane marked "right turn only."



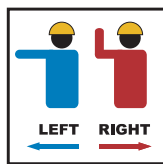
Wear a Properly Fitted Bicycle Helmet

If in an accident, a bicycle helmet can reduce the risk of head injury by 85 percent and the risk of brain injury by 88 percent.



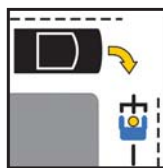
See and Be Seen

The law requires a white headlight and rear reflector at night. A light on the front end of the bike must be seen from at least 500 feet. A reflector on the back of the bike must be seen from at least 600 feet.



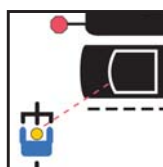
Use Hand Signals

Hand signals tell motorists and pedestrians what you intend to do.



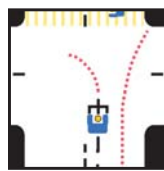
Ride on the Right with Traffic

Bicycling on the wrong side of the road is particularly dangerous at intersections, roadway curves, and on the crest of hills.



Watch for Cars Pulling Out

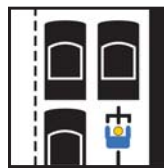
Make eye contact with drivers. Assume they don't see you until you are sure they do.



To Turn Left

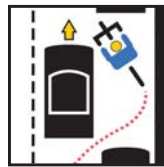
Bicyclists can make a left turn by:

- Signaling, yielding to traffic, moving into the left lane and then turning left
- Riding straight across the street to the far side corner and then walking the bike across the crosswalk.



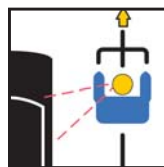
Ride in the Middle of the Lane

At busy intersections and whenever you are moving at the same speed as traffic, you can ride in the middle of the lane; otherwise, you should ride as far to the right as possible.



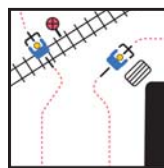
Don't Weave Between Parked Cars

Ride as close as possible to the right and use caution when passing. Ride consistently.



Stay Alert at All Times

Use your eyes AND ears. Watch for road hazards, or anything that could make you lose control of your bike. Never wear headphones while riding a bike.



Watch for Hazards

Watch for unexpected hazards, like potholes, drain gates, glass, and roadside trees and shrubs that may limit visibility.



Alert Pedestrians to your Presence

Give a polite, audible warning when passing a pedestrian (call out, ring a bell or horn). This is especially important on multi-use paths.

Safety Tips for Biking

Be Visible

Wear light, brightly colored clothing. Use lights at night.

Be Predictable

Cooperation makes all road users safer.

Obey Traffic Laws

Bicycles are vehicles; bicyclists have both responsibilities and rights.

Wear a Helmet

Enjoy protection and increased visibility.

Be Alert

Ride defensively and expect the unexpected.

Be Equipped

You will ride easier and safer if you and your bike have proper equipment.

Be Courteous

Do your part in educating motorists to bicyclists' needs. Always signal your intentions and needs.

Adjust Your Bicycle to Fit

When standing, there should be one to two inches between the rider and the top tube (bar) if using a road bike and three to four inches if using a mountain bike. The seat should be level front to back and be adjusted to allow a slight bend at the knee when the leg is fully extended. The handlebar height should be at the same level with the seat.

Park Rules

- Parks are open from sunrise to one hour after sunset.
- No alcohol.
- Dogs must be on leashes and owners must clean up after their pets.
- All park use regulations apply. Violators will be subject to fine or suspension per Naperville Park District Conduct Ordinance #641.
- To report vandalism or rules violations, please contact the Park Police at (630) 601-0925.

Come Ride with Us!

We are a community cycling club devoted to social, recreational and year-round riding.

Our membership is open to anyone interested in the sport of cycling.



For information on our rides / meetings / events, visit —
napervillebikeclub.com

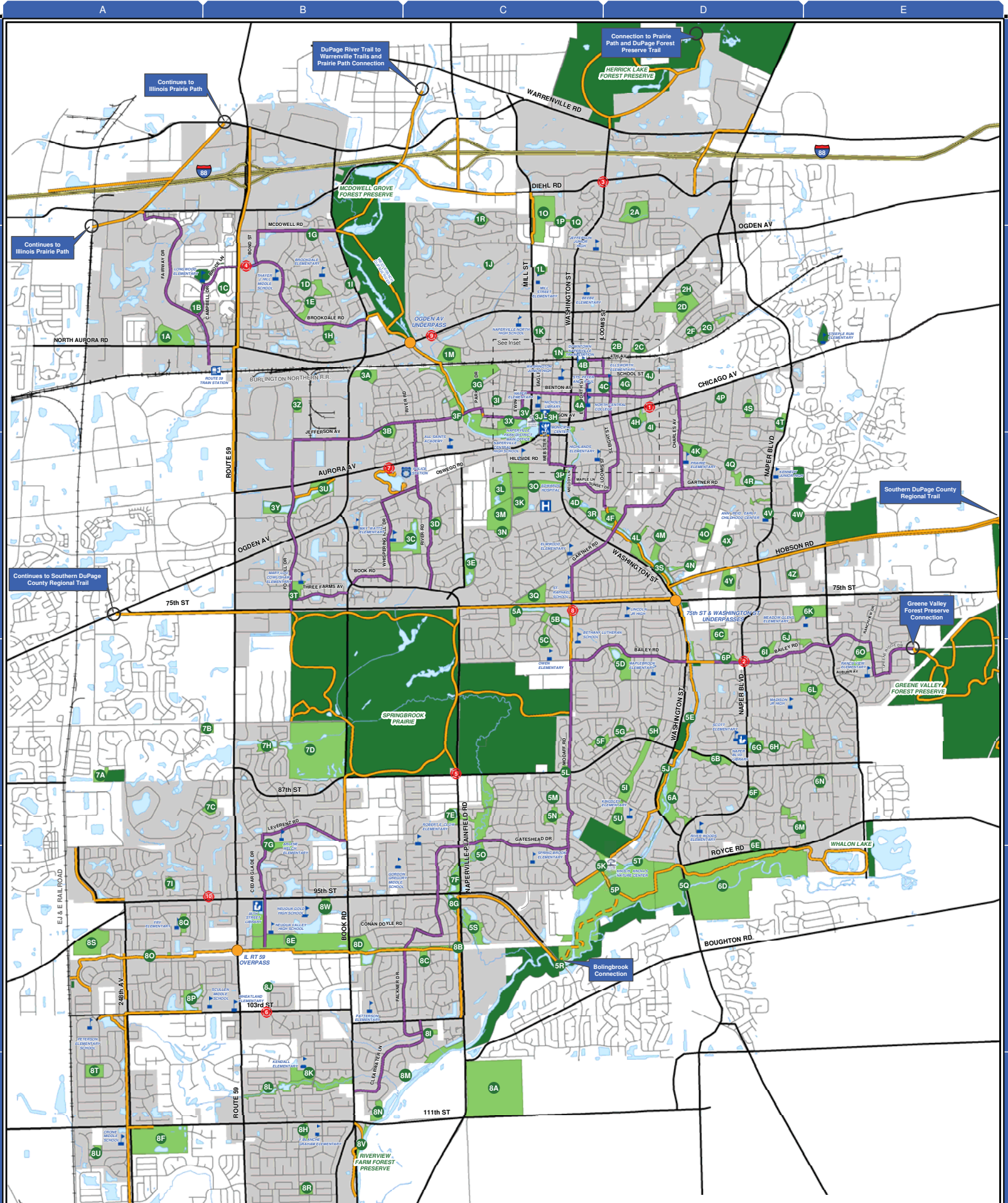
This map is sponsored in part by the Naperville Bicycle Club.

NAPERVILLE Biking Map & Guide

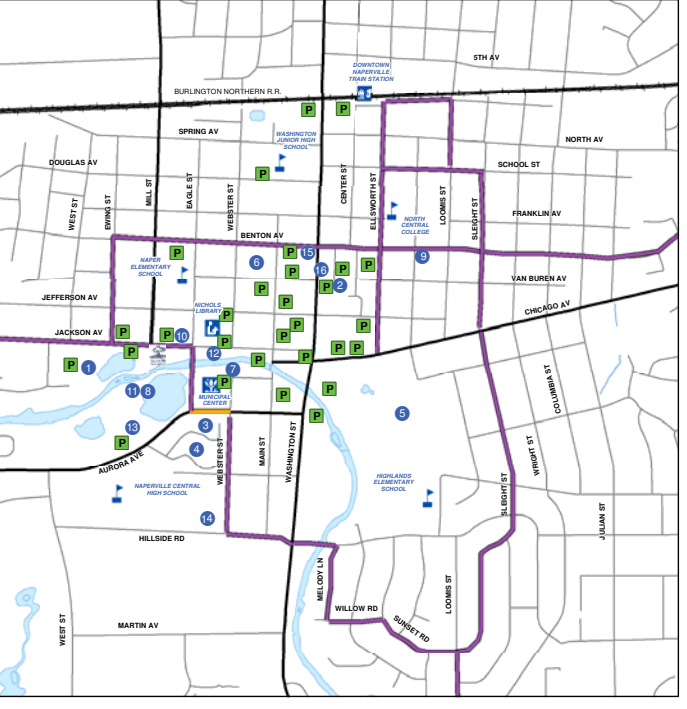


Parks & Recreation

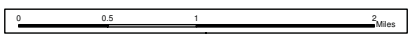
Park ID	Park Name	Map Location
8K	A. George Pradel Park	B6
3J	Alfred Rubin Riverwalk Community Center	C3
1Q	Apache Park	C2
5G	Arbor Way	D4
2A	Arrowhead Park	D1
8B	Ashbury Greenway	B5
8D	Ashbury Park	B5
4N	Bailey Hobson Woods Park	D3
6P	Bainbridge Park	D4
1F	Bainbridge Greens	B2
5A	Brighton Ridge Park	C3
30	Broeker Parkway	C3
7F	Brook Crossings	C5
8G	Brook Prairie	C5
3A	Brush Hill Park	B2
3G	Burlington Park	C2
4B	Burlington Square	C2
4E	Burr Oak	D3
3D	Buttonwood Park	C3
6J	Campus Greens	E4
7G	Cantore Park	B5
3Y	Carol Acres	B3
3X	Centennial Park	C2
4A	Central Park	C2
1R	Century Farms Park	C1
8L	Clow Creek Greenway	B6
1D	Colfax Way	B2
4G	College Park	D2
6C	Columbia Commons	D3
2C	Columbia Estates	D2
8F	Commissioners Park	A6
3M	Community Garden Plots	C3
	West Street Athletic Fields	
4J	Country Commons	D2
1A	Country Lakes Park	A2
8U	Creekside Park	A6
1J	Cress Creek Park	C2
8J	Crestview Knolls	B5
5J	Dorothea Weigand Riverfront Park	D4
6D	DuPage River Park	D5
5Q	DuPage River Sports Complex	D5
6I	Eagle Park	D2
4H	East Greens	D4
1B	Fairways Commons Park	A2
6E	Farrington Commons	D5
6F	Farrington Park	D4
3A1	Fireman's Memorial Park	C2
1I	Forest View Park	B2
3Z	Fort Hill Activity Center	B2
1E	Foxhill Greens	B2
8E	Frontier Sports Complex	B6
3Q	Gartner Park	C3
4Y	Goodrich Woods	D3
3T	Harris Fawell Park	B3
7M	Heatherstone Park	A2
1M	Heritage Woods	C5
8H	High Meadow	B6
4O	Hobson Grove	D3
3N	Hobson West Park	C3
3E	Hobson West Ponds	C4
4M	Hobson Woods Park	D3
6G	Hunters Woods	D4
4S	Huntington Commons	D2
4V	Huntington Estates Park	D3
4U	Huntington Estates Parkway	D3
4W	Huntington Ridge Park	D3
1N	Kendall Park	C2
4I	Kings Park	D2
7B	Kingshill Park	A4
5U	Kingsley Prairie	D4
5P	Knock Knolls	C5
5K	Knock Knolls Commons	D5
5T	Knock Knolls Greenway	D4
3K	Knock Park	C3
2B	Kroehler Park	D2
3R	Lincoln Greenway	C3
4D	Lincoln Woods	C3
3C	May Watts Park	B3
6K	Meadow Glens	D3
1K	Milejce Square	C2
1L	Mill Street Park	C2
7A	Monarch Park	A4
8A	Naperbrook Golf Course	C6
1P	Nike Park Greenway	C2
1O	Nike Sports Complex	C2
6B	Oakridge Parkway	D4
5H	Old Farm Greenway	D4
5I	Old Farm Park	D4
5N	Old Sawmill Park	C4
5M	Old Sawmill Parkway	C4
4T	Olesen Estates	D4
4Q	Olesen Farm Park	D3
4X	Pembroke Commons	D3
4P	Pembroke Park	D2
4L	Pioneer Greenway	D3
3S	Pioneer Park	C3
4K	Prairie Park	C4
1H	Queensbury Greens	B2
6O	Ranchview Park	E4
1G	Redfield Commons	B2
8I	River Run Park	C6
8M	River Run Preserve North	C6
8N	River Run Preserve South	B6
8V	Riverview Farmstead	B6
3H	Riverwalk Park	C2
6A	Riverwoods Park	D4
4R	Rock Ridge Park	D3
8C	Rose Hill Farms Park	C5
4C	Sally Benton Park	D2
2D	Seager Park	D2
8R	South Pointe Park	B6
8S	Southwest Community Park	A5
3L	Sportsman's Park	C3
7E	Springbrook Crossings	C4
7D	Springbrook Golf Course	B4
5O	Springbrook Parkway	C4
5F	Spring-Field Park	D4
2G	Springhill Greenway	D2
2F	Springhill Park	D2
6H	Stanford Meadows	E4
7H	Summerfield Lake Park	B4
8O	Tall Grass Greenway	A5
8P	Tall Grass Lakes	A5
8Q	Tall Grass Park	A5
4Z	Three Meadows	E3
5S	Timbercreek Park	C5
6L	University Heights Park	E4
3F	Veterans Park	D3
4P	W. Friedrich Memorial Park	C3
6M	Walnut Ridge Park	E4
6N	Walnut Ridge Woods	E4
5E	West Branch Parkway	D3
3I	West Greens	C2
5B	Westglen Commons	C3
5C	Westglen Park	C4
7C	White Eagle Park	A4
3U	Willflower Park	B3
1C	Willow Bend West	B2
5L	Willowgate Square	C4
3F	Wii-O-Way Commons	C2
3B	Wii-O-Way Park	B3
5D	Winding Creek Park	D4
2H	Yorkshire Manor Park	D2



- ### Downtown Highlights
- Downtown Naperville Train Station
 - Nichols Library
 - Municipal Center
 - Park District Administrative Building
 - Centennial Beach
 - Naperville Community Concert Center
 - Century Memorial Chapel
 - Martin Mitchell Mansion
 - Merner Field House
 - Naperville Area Chamber of Commerce
 - Naperville Township Offices
 - Paddleboat Dock
 - Pfeiffer Hall
 - Alfred Rubin Riverwalk Community Center
 - Riverwalk Cafe
 - Riverwalk Park
 - Rotary Hill
 - School Dist. 203 Admin. Office
 - U.S. Post Office
 - YMCA
 - Bicycle Parking Locations
- Biking on the sidewalks in downtown Naperville or anywhere on the Naperville Riverwalk is prohibited.



The shared use trails have been designed for recreational uses including biking, walking, jogging, and rollerblading. All trail users are responsible for their own safety and for knowing the rules of the trail and rules of the road.



Legend

	Major Road		Off-Street Bike Route
	Minor Road		Preferred On-Street Bike Route
	Proposed Road		Off-Street Bike Route (Coming 2017)
	Railroad		
	Fire Station		
	School		
	Park		
	Municipal Boundary		