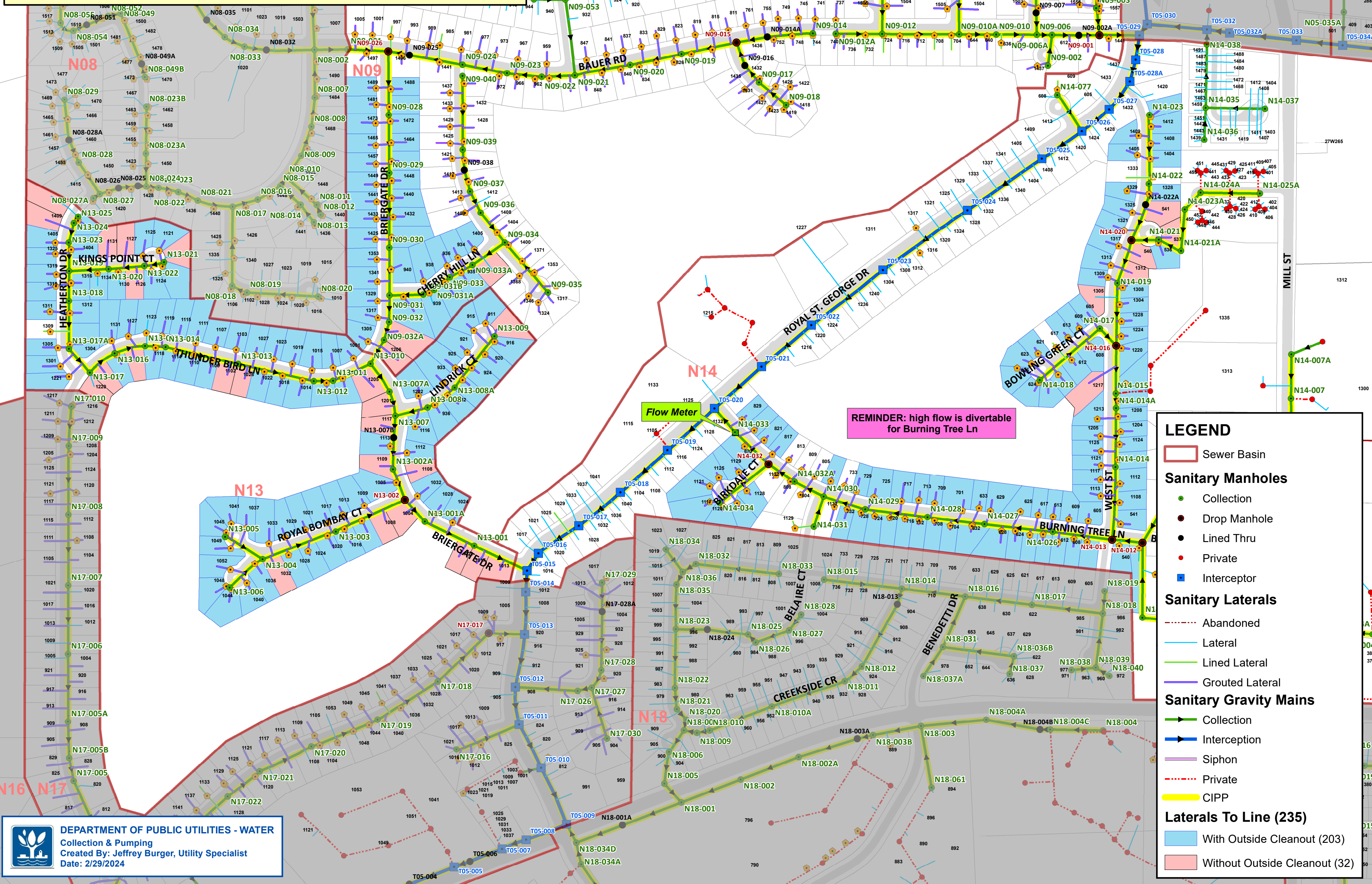


CITY OF NAPERVILLE

Department of Public Utilities - Water

2024 Sanitary Lateral Lining

Cress Creek Subdivision



LEGEND

- Sewer Basin
- Sanitary Manholes**
 - Collection
 - Drop Manhole
 - Lined Thru
 - Private
 - Interceptor
- Sanitary Laterals**
 - Abandoned
 - Lateral
 - Lined Lateral
 - Grouted Lateral
- Sanitary Gravity Mains**
 - ▶ Collection
 - ▶ Interception
 - ▶ Siphon
 - Private
 - CIPP
- Laterals To Line (235)**
 - With Outside Cleanout (203)
 - Without Outside Cleanout (32)