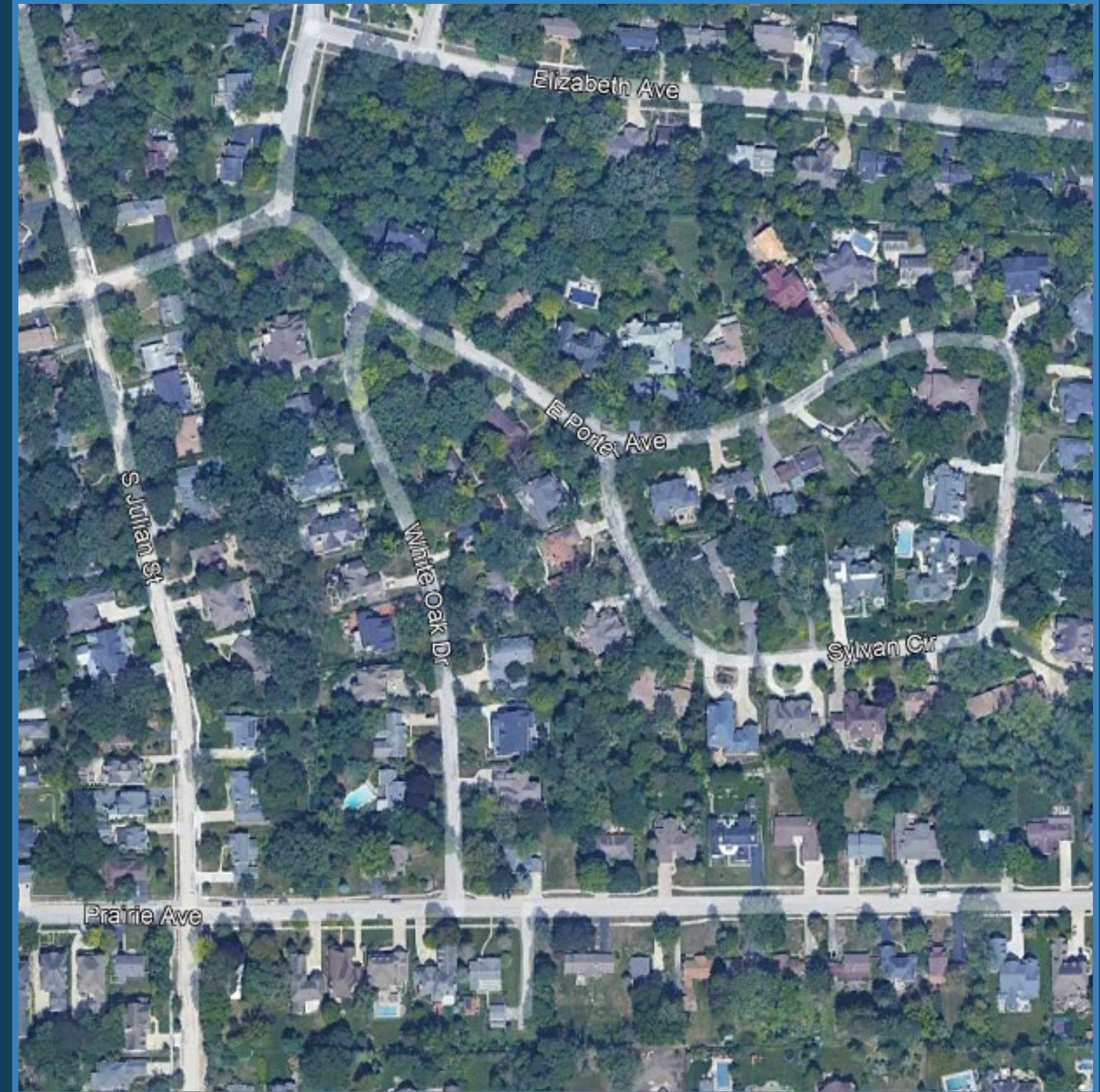


Public Information Meeting #2

White Oak Roadway & Utility Improvements

June 2, 2026

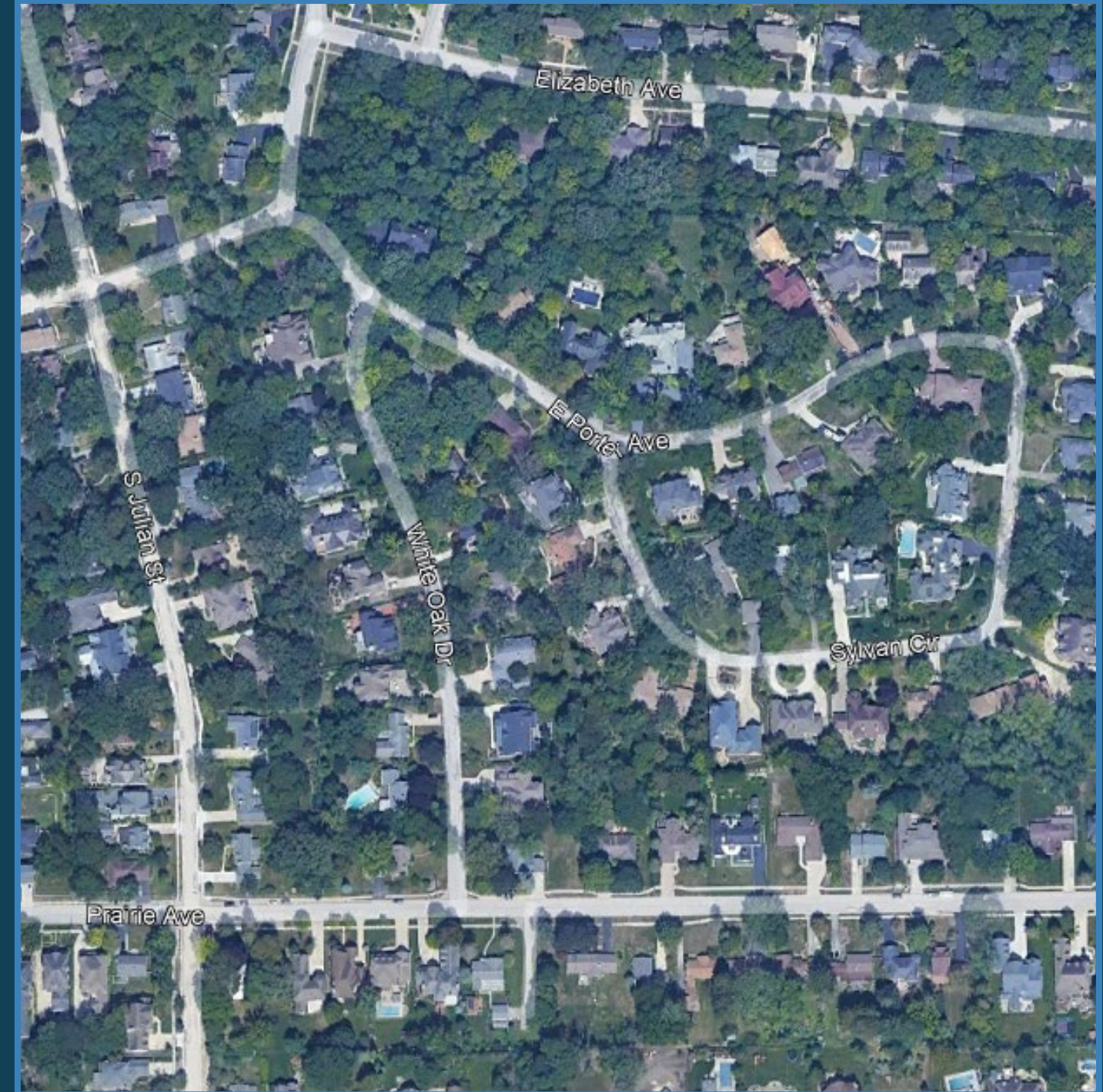
4:30 – 7:00 PM



Public Information Meeting #2

Welcome!

Please Sign In



White Oak Drive Roadway & Utility Improvements

1 Introduction

Welcome to the public meeting for the White Oak Drive Roadway & Utility Improvement Project!

The room is set up with 8 stations to introduce you to the project and get your input. Please see anyone with a project name tag if you have any questions.

Comments can be submitted at Station 8.

Thank you for attending!



2

Summary of Meeting #1



A copy of the previous exhibits are available



Scan to view



Water Main Replacement:

The existing water main is nearing the end of its life and must be replaced.



Sanitary Sewer Replacement:

Previous rehabilitation efforts to the sanitary sewer have met their useful life. The sanitary sewer must also be replaced.



Road Reconstruction:

The roads within the project area are similar to roads found in a rural setting, with no curb & gutter. Replacement of aging utilities presents an opportunity to reconstruct the roadway to current standards.



Drainage Improvements:

The City would like to take advantage of the road reconstruction and improve drainage in the neighborhood by installing storm sewers along the roadway.

2 Summary of Meeting #1



The first public information meeting was held on January 13, 2026. Input was gathered on design alternatives. Most respondents prefer:

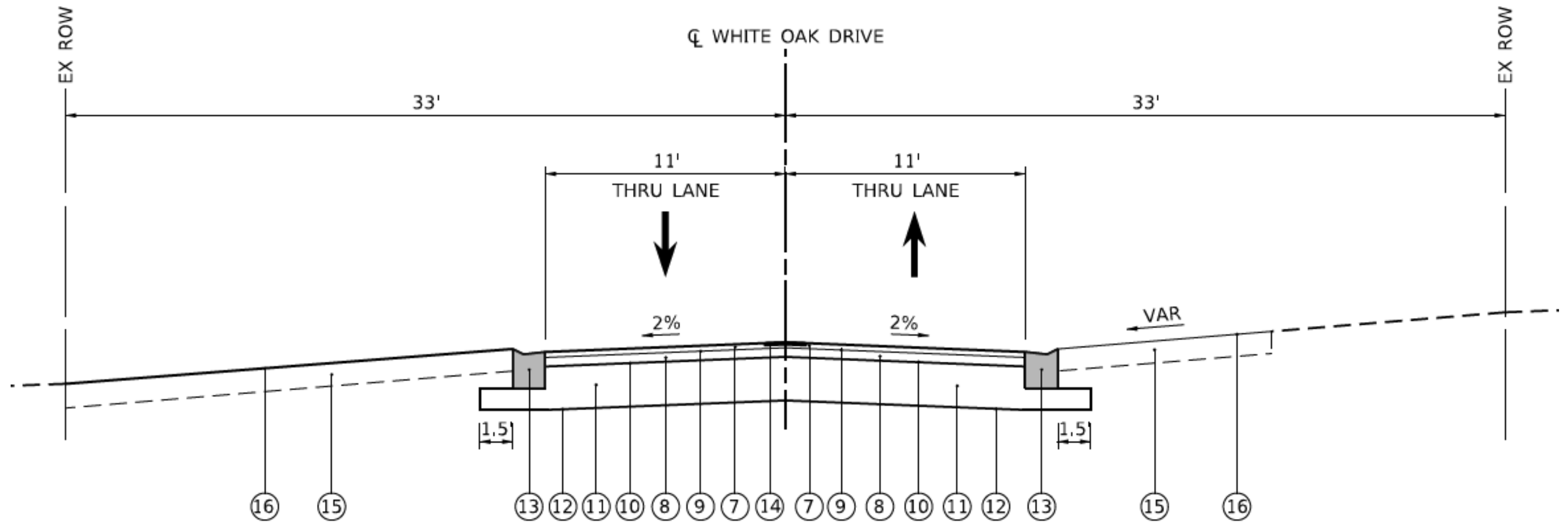
- A minimal roadway width of 22-feet, matching Sylvan Circle
- Flush or depressed curbs along the edge of the roadway
- Minimal tree removals
- No sidewalks



More in-depth preliminary designs were made from this feedback.

3

Typical Design Section



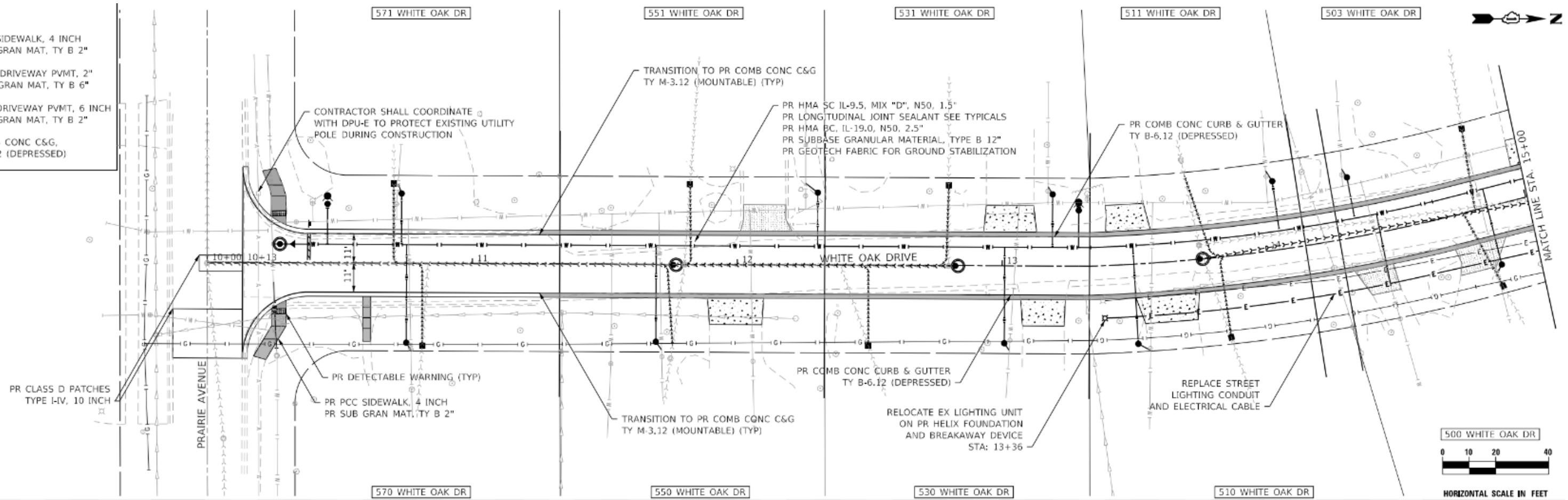
PROPOSED TYPICAL SECTION - 1

4

Proposed Roadway Alignment

LEGEND

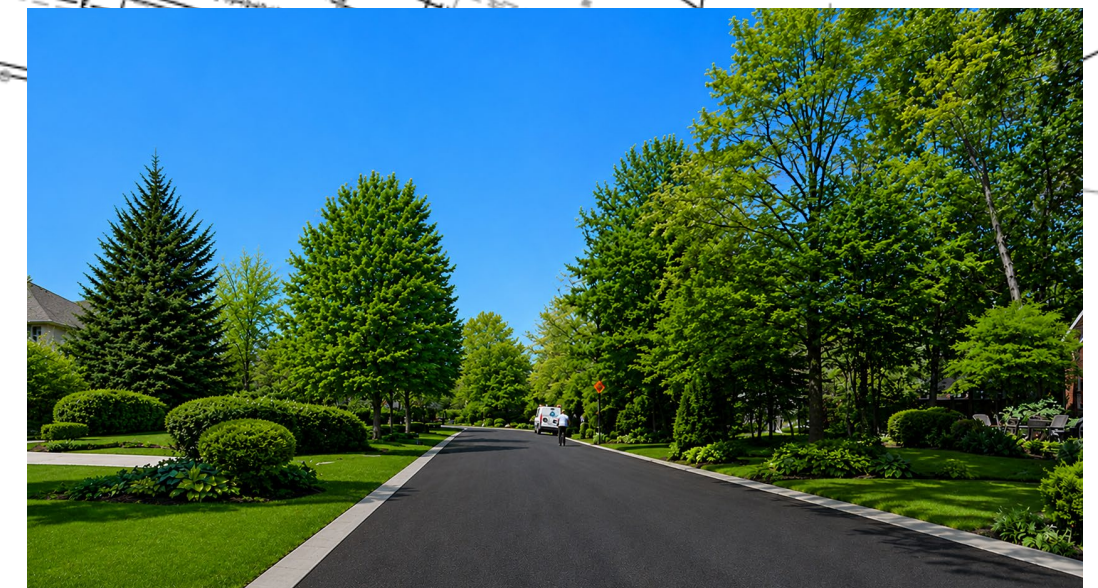
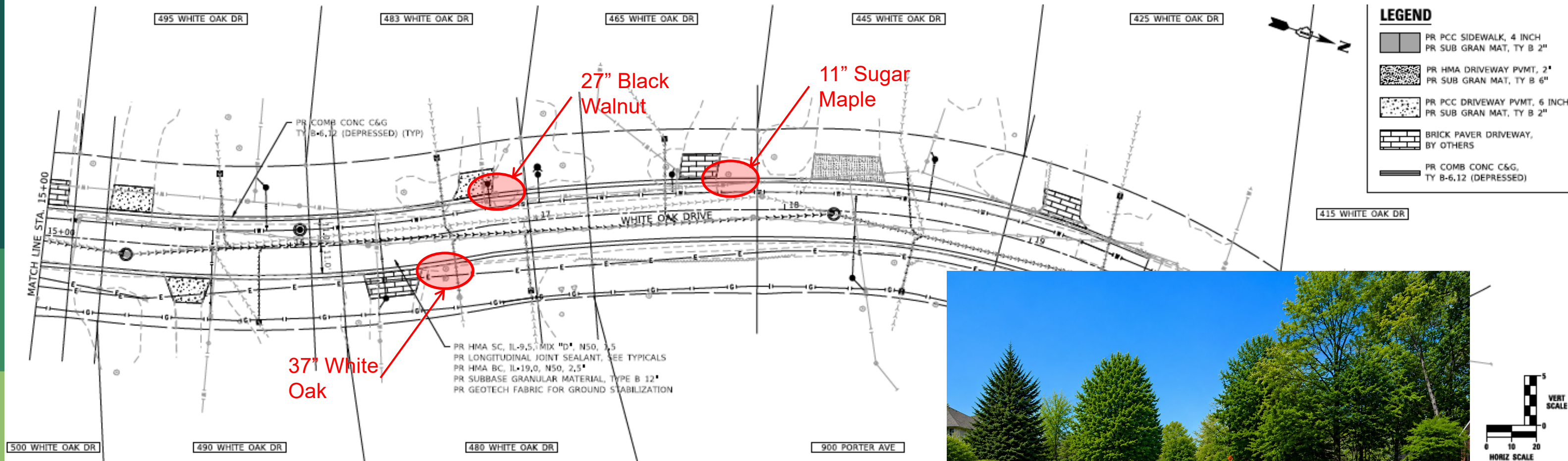
- PR PCC SIDEWALK, 4 INCH
PR SUB GRAN MAT, TY B 2"
- PR HMA DRIVEWAY PVMT, 2"
PR SUB GRAN MAT, TY B 6"
- PR PCC DRIVEWAY PVMT, 6 INCH
PR SUB GRAN MAT, TY B 2"
- PR COMB CONC C&G,
TY B-6.12 (DEPRESSED)



4

Proposed Roadway Alignment

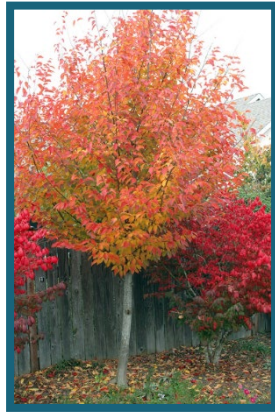
If a tree will be removed in the right-of-way adjacent to your property, please select a preferred replacement tree from those presented here



4

Tree Replacement Choices

If a tree will be removed in the right-of-way adjacent to your property, please select a preferred replacement tree from those presented here



AMERICAN HORNBEAM – *Carpinus caroliniana*
Size: 25' tall by 25' wide.
Growth Rate: Slow
Leaf Color: Dark green leaves turn yellow, orange and red in fall.
Notes: Native to Illinois, best in moist soils, but tolerates both wet and dry.



AMERICAN LINDEN – *Tilia americana*
Size: 60' tall by 40' wide.
Growth Rate: Medium
Leaf Color: Light green leaves turn yellow in fall.
Notes: Small fragrant flowers in summer, native to Illinois.

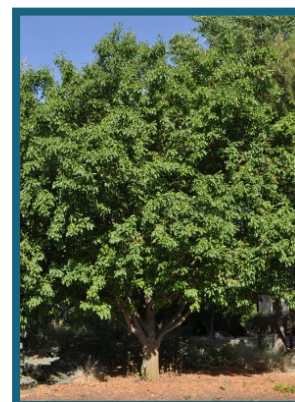
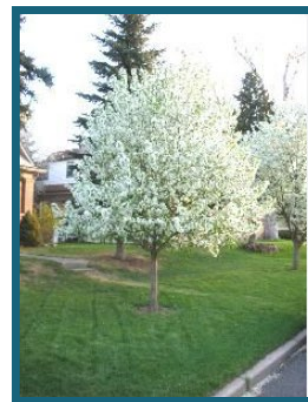


BUR OAK – *Quercus macrocarpa*
Size: 80' tall by 60' wide.
Growth Rate: Slow at first then medium
Leaf Color: Green leaves turn yellow to brown in fall.
Notes: Native to Illinois, long lived large shade tree.



CATALPA – *Catalpa speciosa*
Size: 55' tall x 30' wide.
Growth Rate: Medium to fast.
Leaf Color: Large heart shaped bright green leaves turn yellow green to brown in fall.
Notes: Native to Illinois, beautiful white flowers in late spring, long thin cigar shaped seed pods.

Newly installed trees will have 2"-2 1/2" diameter trunks



CRABAPPLE – *Malus species*
Size: 20' tall by 20' wide, but varies widely cultivar
Growth Rate: Medium
Leaf Color: Most have green leaves, some cultivars have purple leaves.
Notes: Beautiful flowers in the spring in many different colors depending on cultivar.

4

Tree Replacement Choices

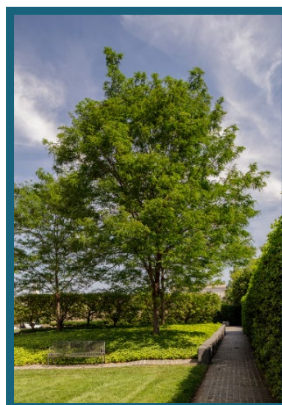
If a tree will be removed in the right-of-way adjacent to your property, please select a preferred replacement tree from those presented here



GINKGO – *Ginkgo biloba*
Size: 60' tall by 40' wide.
Growth Rate: Slow
Leaf Color: Green leaves turn bright yellow in fall.
Notes: Attractive fan shaped leaves, very urban tolerant, no insect or disease problems. One of the oldest trees, growing on earth for more than 150 million years.



HACKBERRY - *Celtis occidentalis*
Size: 60' tall x 40' wide.
Growth Rate: Medium
Leaf Color: Green leaves turn yellow in fall.
Notes: Native to Illinois, unique warty bark, adaptable to tough urban conditions.



HONEYLOCUST - *Gleditsia triacanthos var. inermis*
Size: 50' tall by 40' wide.
Growth Rate: Fast
Leaf Color: Bright green in summer turning yellow in fall.
Notes: Native to Illinois, tree is somewhat 'vase' shaped with fine texture. Shade is not dense, consequently grass is able to grow under the tree.



HYBRID ELM - *Ulmus species*
Size: 70' tall by 50' wide.
Growth Rate: Fast
Leaf Color: Dark green in summer turning yellow in fall.
Notes: Tolerant of urban conditions, including poor soils, salt and pollution.

Newly installed trees will have 2"-2 1/2" diameter trunks



JAPANESE TREE LILAC - *Syringa reticulata*
Size: 25' tall by 15' wide.
Growth Rate: Medium
Leaf Color: Dark green in summer turning yellow/brown in fall
Notes: Small ornamental tree native to Japan. Plumes of creamy white flowers in summer. Attractive reddish-brown bark.

4

Tree Replacement Choices

If a tree will be removed in the right-of-way adjacent to your property, please select a preferred replacement tree from those presented here

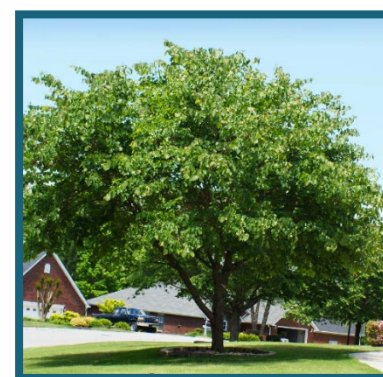


KENTUCKY COFFEE TREE – *Gymnocladus dioica*
Size: 65' tall x 50' wide.

Growth Rate: Medium

Leaf Color: Dark bluish green in summer and yellow in fall.

Notes: Native to Illinois, very few disease or insect problems, tolerates tough urban conditions.



REDBUD – *Cercis Canadensis*
Size: 25' tall by 25' wide.

Growth Rate: Medium

Leaf Color: Heart shaped green leaves turn yellow fall.

Notes: Native to Illinois, with small purple flowers in spring.

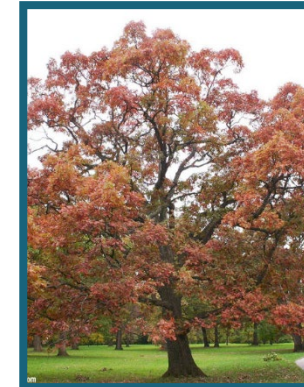


SILVER LINDEN – *Tilia tomentosa*
Size: 50' tall by 30' wide.

Growth Rate: Medium

Leaf Color: Dark green upper surface with silver color beneath, turning yellow in fall.

Notes: One of the best lawn and street trees, tolerates heat and drought.



SWAMP WHITE OAK – *Quercus bicolor*

Size: 60' tall by 60' wide.

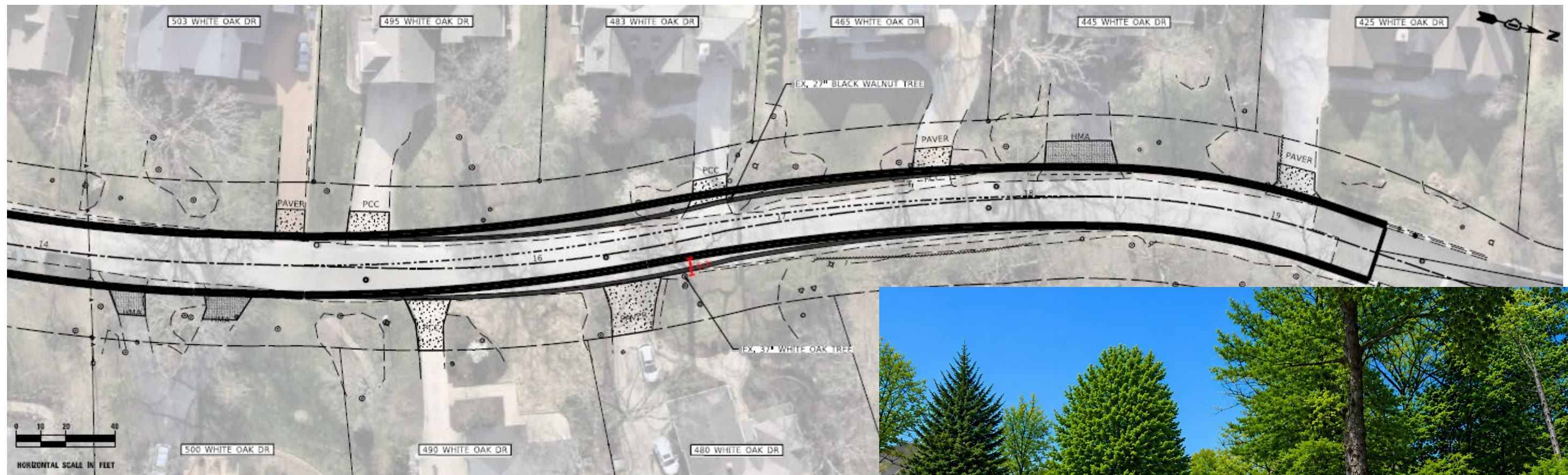
Growth Rate: Medium

Leaf Color: Dark glossy leaves turn yellow to brown in fall.

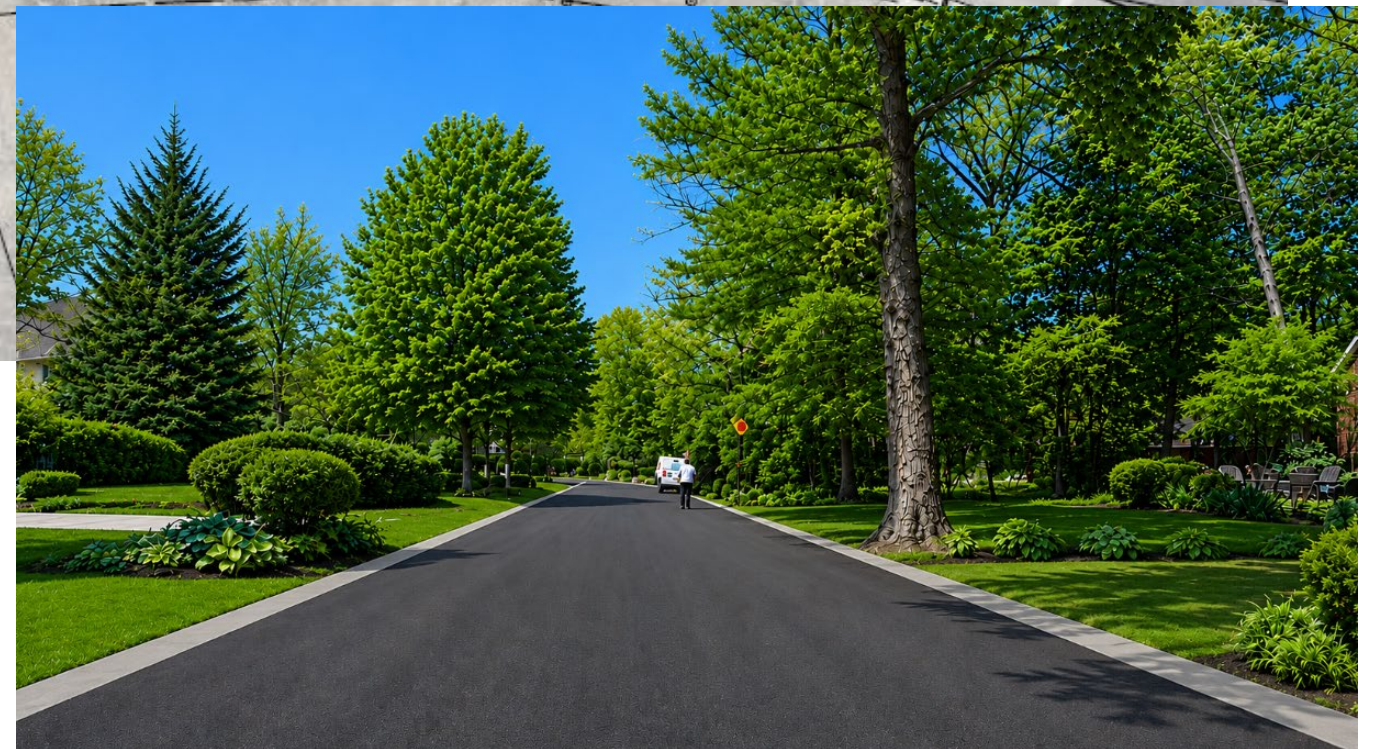
Notes: Native to Illinois, tolerates urban conditions well.

Newly installed trees will have 2"-2 1/2" diameter trunks

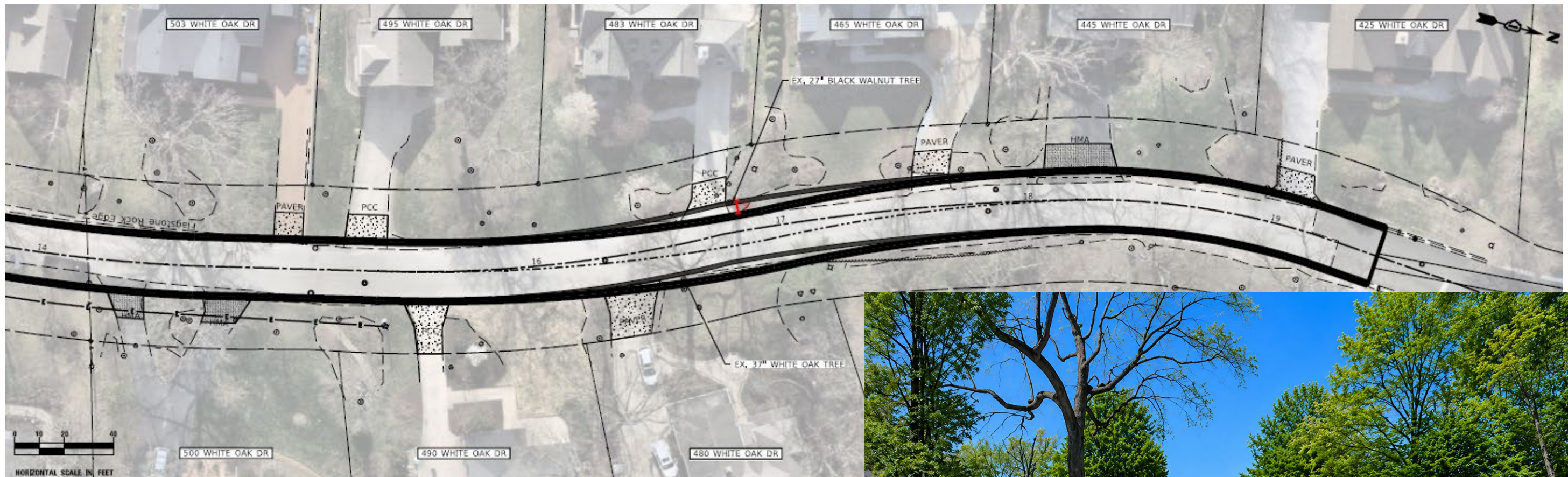
5 Alignment Alternative #1 for Tree Preservation



This alternative shifts the roadway to the west by approximately five (5) feet, preserving the 37-inch white oak tree and providing additional clearance between the tree and the edge of pavement.



5 Alignment Alternative #2 for Tree Preservation



This alternative shifts the roadway to the east by approximately five (5) feet, preserving the 27-inch black walnut tree and providing additional clearance between the tree and the edge of pavement.

6

Individual Property Impacts

Plans with a closer look at each property are found here.

1. Brick Paver Driveways

Properties at 425, 465, 480, 503, and 511 White Oak Drive currently have brick paver driveways. Property owners may choose between the following options:

- Option A: The project contractor will replace the driveway apron with concrete.
- Option B: The property owner may hire a contractor to reinstall brick pavers after the project is complete. The City will reimburse the owner the equivalent cost of a standard concrete driveway apron (based on the project bid price).

2. Tree Removal and Replacement

If a tree(s) is being removed adjacent to your property, there may be an opportunity to replant a tree in the right-of-way. Eligible property owners are invited to select a preferred replacement tree. Ask staff for your available tree choices.

7

Proposed Project Schedule

Public Meeting #1
January 13, 2026

Public Meeting #2
June 2, 2026

Preliminary Design

Finalize Design

Bidding and Award

Construction

Jan-May 2026

June-Nov 2026

Dec 2026-Jan 2027

Mar-Nov 2027

We Are Here

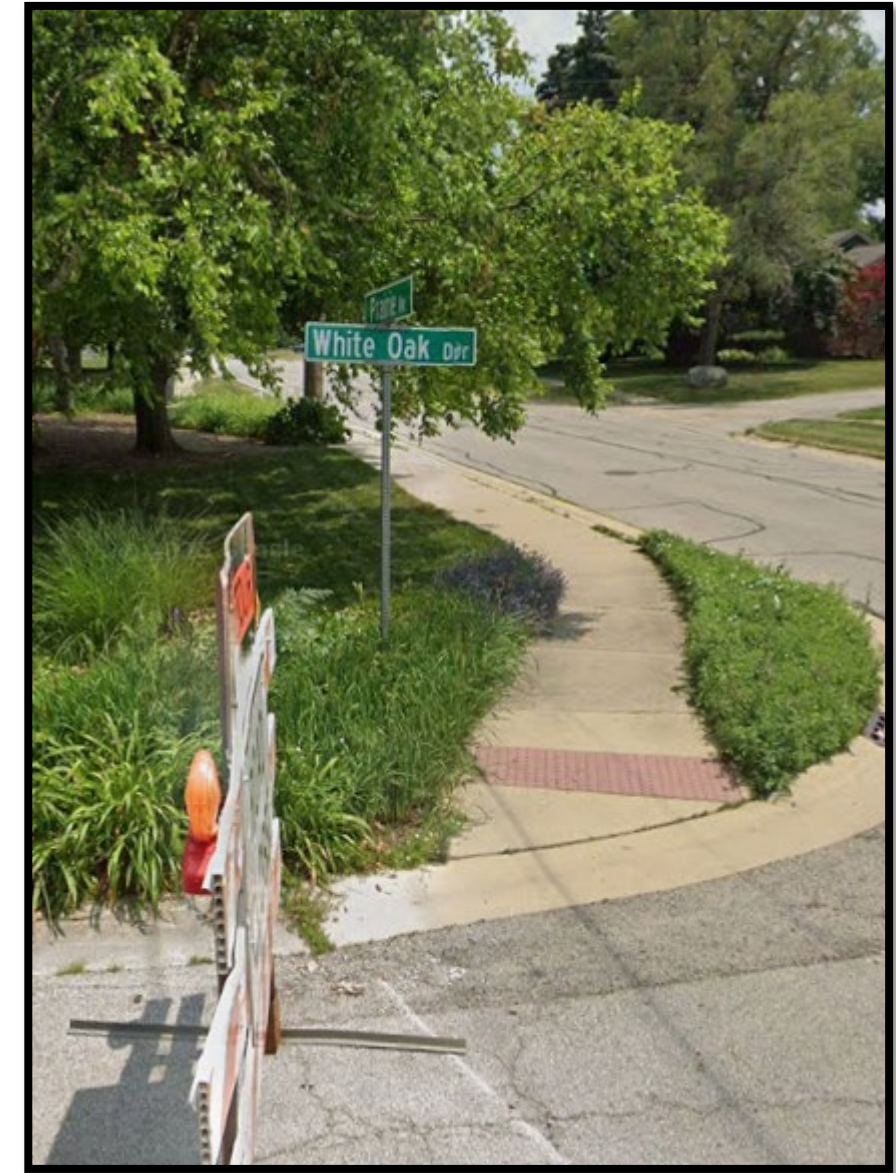
8 | Your Role

We want your input!

Please fill out a comment form to let us know your thoughts and/or concerns. The City will consider current standards, safety requirements, and resident feedback during the project design.

Completed forms can be placed in the drop-box during today's public meeting, mailed/dropped off at the address below, or emailed to the Project Manager (kevinv@thomas-engineering.com). All comments must be submitted no later than June 19, 2026.

City of Naperville
Transportation, Engineering, and
Development Business Group
ATTN: Lisa Weesner, P.E.
400 S. Eagle Street
Naperville, IL 60540



Input forms also found on the City's project website:

<https://www.naperville.il.us/projects-in-naperville/white-oak-roadway-and-utility-improvement-project/>