

STREET #	230
DIRECTION	N
STREET	BRAINARD
SUFFIX	ST
PIN	0818134001
LOCAL SIGNIFICANCE RATING	NC
POTENTIAL IND NR? (Y or N)	N
Contributing to a NR DISTRICT?	NC
Contributing secondary structure?	
Listed on existing SURVEY?	Local District; NR District

**GENERAL INFORMATION**

CATEGORY	site	CURRENT FUNCTION	Landscape - parking lot
CONDITION		HISTORIC FUNCTION	
INTEGRITY		REASON for SIGNIFICANCE	
SECONDARY STRUCTURE			

ARCHITECTURAL DESCRIPTION

ARCHITECTURAL CLASSIFICATION	Parking Lot	PLAN	
DETAILS		NO OF STORIES	
BEGINYEAR		ROOF TYPE	
OTHER YEAR		ROOF MATERIAL	
DATESOURCE		FOUNDATION	
WALL MATERIAL (current)		PORCH	
WALL MATERIAL 2 (current)		WINDOW MATERIAL	
WALL MATERIAL (original)		WINDOW MATERIAL	
WALL MATERIAL 2 (original)		WINDOW TYPE	
		WINDOW CONFIG	
SIGNIFICANT FEATURES			
ALTERATIONS			

HISTORIC INFORMATION

**HISTORIC
NAME**

**COMMON
NAME**

COST

ARCHITECT

ARCHITECT2

BUILDER

**ARCHITECT
SOURCE**

**HISTORIC
INFO**

PERMITS

LANDSCAPE

Southeast corner of North and
Brainard; front and north sidewalks;
privacy plantings

COA DATE

**COA
DECISION**

PREPARER

**PREPARER
ORGANIZATION**

SURVEYDATE

SURVEYAREA

230 N BRAINARD

**DIGITAL
PHOTO ID**

\\images\brainard
230n.jpg

**DIGITAL
PHOTO ID2**

\\images\brainard
230n(2).jpg

**DIGITAL
PHOTO ID3**

\\images\brainard230
n(3).jpg

**DIGITAL
PHOTOID4**

\\images\brainard230
n(4).jpg

STREET #	5
DIRECTION	N
STREET	BRAINARD
SUFFIX	ST
PIN	0818305009
LOCAL SIGNIFICANCE RATING	NC
POTENTIAL IND NR? (Y or N)	N
Contributing to a NR DISTRICT?	NC
Contributing secondary structure?	-
Listed on existing SURVEY?	Local District; NR District

**GENERAL INFORMATION**

CATEGORY	building	CURRENT FUNCTION	Religion - religious facility
CONDITION	good	HISTORIC FUNCTION	Religion - religious facility
INTEGRITY	minor alterations	REASON for SIGNIFICANCE	
SECONDARY STRUCTURE			

ARCHITECTURAL DESCRIPTION

ARCHITECTURAL CLASSIFICATION	Late Prairie	PLAN	rectangular
DETAILS		NO OF STORIES	2
BEGINYEAR	1960	ROOF TYPE	Flat
OTHER YEAR		ROOF MATERIAL	Not visible
DATESOURCE	Date panel	FOUNDATION	Concrete - poured
WALL MATERIAL (current)	Stone veneer	PORCH	-
WALL MATERIAL 2 (current)	Brick	WINDOW MATERIAL	Metal
WALL MATERIAL (original)	Stone veneer	WINDOW MATERIAL	
WALL MATERIAL 2 (original)	Brick	WINDOW TYPE	casement
		WINDOW CONFIG	1-light
SIGNIFICANT FEATURES	Flat roofline with overhangs, ribbon windows separated by horizontal banding		
ALTERATIONS			

HISTORIC INFORMATION

HISTORIC NAME St Peter & Paul Pastoral Hall

COMMON NAME

COST

ARCHITECT

ARCHITECT2

BUILDER

ARCHITECT SOURCE

HISTORIC INFO

PERMITS

LANDSCAPE Northwest corner of Brainard and Benton; front and south sidewalks; mature trees; rear alley

COA DATE

COA DECISION

PREPARER Lara Ramsey

PREPARER ORGANIZATION GRANACKI HISTORIC CONSULTANTS

SURVEYDATE 11/27/2007

SURVEYAREA NAPERVILLE



DIGITAL PHOTO ID \\Images\\brainard005n.jpg

DIGITAL PHOTO ID2 \\Images\\brainard005n(2).jpg

DIGITAL PHOTO ID3

DIGITAL PHOTOID4

\\Images\\brainard005n(3).jpg

\\Images\\brainard005n(4).jpg

STREET #	5
DIRECTION	S
STREET	BRAINARD
SUFFIX	ST
PIN	0818314008
LOCAL SIGNIFICANCE RATING	S
POTENTIAL IND NR? (Y or N)	N
Contributing to a NR DISTRICT?	C
Contributing secondary structure?	-
Listed on existing SURVEY?	Local District; NR District

**GENERAL INFORMATION**

CATEGORY	building	CURRENT FUNCTION	Domestic - single dwelling
CONDITION	excellent	HISTORIC FUNCTION	Domestic - single dwelling
INTEGRITY	minor alterations and addition(s)	REASON for SIGNIFICANCE	Fine, intact example of early 20th century Queen Anne - Free Classic.
SECONDARY STRUCTURE			

ARCHITECTURAL DESCRIPTION

ARCHITECTURAL CLASSIFICATION	Queen Anne - Free Classic	PLAN	irregular
DETAILS		NO OF STORIES	2.5
BEGINYEAR	c. 1900	ROOF TYPE	Gable on hip
OTHER YEAR		ROOF MATERIAL	Asphalt - shingle
DATESOURCE	surveyor	FOUNDATION	Concrete - block
WALL MATERIAL (current)	Wood	PORCH	Full front
WALL MATERIAL 2 (current)		WINDOW MATERIAL	Wood
WALL MATERIAL (original)	Wood	WINDOW MATERIAL	aluminum
WALL MATERIAL 2 (original)		WINDOW TYPE	double hung/fixed
		WINDOW CONFIG	1/1; 1-light
SIGNIFICANT FEATURES	Hipped roof with front, north and south side gabled bays; front porch with classical columns and pediment over porch entry; recessed south end entry; historic 1/1 single and double hung windows		
ALTERATIONS	Two story rear addition (may have originally been historic one story addition with 2nd story added later); north/rear entry porch; replacement gable windows in original openings (not historic)		

HISTORIC INFORMATION

HISTORIC NAME	
COMMON NAME	
COST	
ARCHITECT	
ARCHITECT2	
BUILDER	
ARCHITECT SOURCE	

HISTORIC INFO	
----------------------	--

PERMITS	
----------------	--

LANDSCAPE	Southwest corner of Brainard and Benton; front and north sidewalks; partial side driveway; rear fencing; south side yard; mature trees
------------------	--

COA DATE	
-----------------	--

COA DECISION	
---------------------	--

PREPARER	Lara Ramsey
-----------------	-------------

PREPARER ORGANIZATION	GRANACKI HISTORIC CONSULTANTS
------------------------------	-------------------------------

SURVEYDATE	11/27/2007
-------------------	------------

SURVEYAREA	NAPERVILLE
-------------------	------------



DIGITAL PHOTO ID \\Images\\brainard005s.jpg

DIGITAL PHOTO ID2 \\Images\\brainard005s(2).jpg

DIGITAL PHOTO ID3

DIGITAL PHOTO ID4

\\Images\\brainard005s(3).jpg

\\Images\\brainard005s(4).jpg

City of NAPERVILLE
ILLINOIS URBAN ARCHITECTURAL AND HISTORICAL SURVEY
CONTINUATION SHEET

STREET # 10

STREET N. BRAINARD STREET

ADDITIONAL PHOTOS OR INFORMATION

Significant Features

Hipped roof w/ modillion cornice; center full height portico w/ massive paired stone Ionic columns and triangular pediment; stone entry w/ garland and round arch multi-light transom; stone corner quoins; round arch 2nd story window openings with voisoirs; red face brick exterior with buff brick base

Historic Information

[from A GUIDE TO CHICAGO'S HISTORIC SUBURBS, p. 408]

“This relatively small but quite massive structure shows that, at North Central College, the library was a serious place. It has pairs of Ionic columns flanking the doorway and supporting the pediment which is made of sheet metal, as is the cornice. In the block to which that frontispiece is attached are pairs of arched windows with the extrados of the arch traced in limestone, corresponding to the frontispiece and to the quoins and mud sill of the brick structure.”

STREET #	10
DIRECTION	N
STREET	BRAINARD
SUFFIX	ST
PIN	0818306001
LOCAL SIGNIFICANCE RATING	S
POTENTIAL IND NR? (Y or N)	N
Contributing to a NR DISTRICT?	C
Contributing secondary structure?	-
Listed on existing SURVEY?	Local District; NR District

**GENERAL INFORMATION**

CATEGORY	building	CURRENT FUNCTION	Education - college
CONDITION	good	HISTORIC FUNCTION	Education - library
INTEGRITY	minor alterations	REASON for SIGNIFICANCE	The pedimented front portico with massive paired Ionic columns distinguishes this Classical Revival structure. The building is one of only a handful of Carnegie Libraries constructed on college campuses.
SECONDARY STRUCTURE			

ARCHITECTURAL DESCRIPTION

ARCHITECTURAL CLASSIFICATION	Classical Revival	PLAN	Rectangular
DETAILS		NO OF STORIES	3
BEGINYEAR	1908	ROOF TYPE	Hipped
OTHER YEAR		ROOF MATERIAL	Not visible
DATESOURCE	NCC	FOUNDATION	Concrete - poured
WALL MATERIAL (current)	Brick	PORCH	Front portico
WALL MATERIAL 2 (current)	Stone	WINDOW MATERIAL	Aluminum/Wood
WALL MATERIAL (original)	Brick	WINDOW MATERIAL	Beveled glass
WALL MATERIAL 2 (original)	Stone	WINDOW TYPE	Casement/double hung/fix
		WINDOW CONFIG	1-light; multi-light
SIGNIFICANT FEATURES	Hipped roof w/ modillion cornice; center full height portico w/ massive paired stone Ionic columns and triangular pediment; stone entry w/ garland and round arch multi-light transom--SEE CONTINUATION SHEET		
ALTERATIONS	Building rehabbed in 1980s--replacement windows in original openings (configurations may be different--not historic); replacement front doors and transom		

HISTORIC INFORMATION

HISTORIC NAME

COMMON NAME

COST

ARCHITECT

ARCHITECT2

BUILDER

ARCHITECT SOURCE

HISTORIC INFO

PERMITS ****GUIDE TO CHICAGO'S HISTORIC SUBURBS, P. 408**.** After being vacant for many years, the building was rehabbed and re-opened in 1986 (NHS file)

LANDSCAPE Northeast corner of Brainard and Benton; at southwest corner of main campus block of North Central College; front, side, and rear sidewalks; building on slight rise; mature trees

COA DATE

COA DECISION

PREPARER

PREPARER ORGANIZATION

SURVEYDATE

SURVEYAREA

10 N BRAINARD



DIGITAL PHOTO ID

DIGITAL PHOTO ID2

DIGITAL PHOTO ID3

DIGITAL PHOTO ID4

STREET #	11
DIRECTION	N
STREET	BRAINARD
SUFFIX	ST
PIN	0818305008
LOCAL SIGNIFICANCE RATING	PS
POTENTIAL IND NR? (Y or N)	N
Contributing to a NR DISTRICT?	C
Contributing secondary structure?	-
Listed on existing SURVEY?	IHSS (HD); Local District; NR

**GENERAL INFORMATION**

CATEGORY	building	CURRENT FUNCTION	Domestic - single dwelling
CONDITION	good	HISTORIC FUNCTION	Domestic - single dwelling
INTEGRITY	minor alterations and addition(s)	REASON for SIGNIFICANCE	This handsome Italianate remains notable as an intact local example of the style, despite several historic additions, including a 1905 front porch, replacement windows, and rear addition .
SECONDARY STRUCTURE			

ARCHITECTURAL DESCRIPTION

ARCHITECTURAL CLASSIFICATION	Gabled Ell	PLAN	L
DETAILS	Italianate	NO OF STORIES	2
BEGINYEAR	c. 1875	ROOF TYPE	Front gable
OTHER YEAR		ROOF MATERIAL	Asphalt - shingle
DATESOURCE	Surveyor	FOUNDATION	Concrete - block
WALL MATERIAL (current)	Wood	PORCH	Front entry
WALL MATERIAL 2 (current)		WINDOW MATERIAL	Wood
WALL MATERIAL (original)	Wood	WINDOW MATERIAL	
WALL MATERIAL 2 (original)		WINDOW TYPE	double hung
		WINDOW CONFIG	1/1
SIGNIFICANT FEATURES	Front gable bay with side (south) gabled ell; historic (not original---c. 1900) 1/1 wood windows with pediment lintels; south end entry; historic siding		
ALTERATIONS	Front porch addition (not historic); replacement front door and surround (not historic); 2 story rear addition		

HISTORIC INFORMATION

HISTORIC NAME	
COMMON NAME	
COST	
ARCHITECT	
ARCHITECT2	
BUILDER	
ARCHITECT SOURCE	

HISTORIC INFO	
---------------	--

PERMITS	
---------	--

LANDSCAPE	Midblock on west side of residential street; front sidewalk; rear alley; similar setbacks; mature trees; rear fencing
-----------	---

COA DATE	
----------	--

COA DECISION	
--------------	--

PREPARER	Lara Ramsey
----------	-------------

PREPARER ORGANIZATION	GRANACKI HISTORIC CONSULTANTS
-----------------------	-------------------------------

SURVEYDATE	11/27/2007
------------	------------

SURVEYAREA	NAPERVILLE
------------	------------



DIGITAL PHOTO ID
\\images\brainard011n.jpg

DIGITAL PHOTO ID2
\\images\brainard011n(2).jpg

DIGITAL PHOTO ID3

DIGITAL PHOTO ID4

\\images\brainard011n(3).jpg

\\images\brainard011n(4).jpg

City of NAPERVILLE

ILLINOIS URBAN ARCHITECTURAL AND HISTORICAL SURVEY CONTINUATION SHEET

STREET # 11

STREET S. BRAINARD STREET

ADDITIONAL PHOTOS OR INFORMATION

Significant Features

Flared hipped roof with overhanging eaves; front and north side gables w/ deep cornice returns; historic hipped porch w/ rounded columns on concrete block piers (probably an historic alteration); historic leaded glass double and single hung windows; north side three-sided window bay with flared roof and leaded glass upper sashes in windows

STREET #	11
DIRECTION	S
STREET	BRAINARD
SUFFIX	ST
PIN	0818314009
LOCAL SIGNIFICANCE RATING	PS
POTENTIAL IND NR? (Y or N)	N
Contributing to a NR DISTRICT?	C
Contributing secondary structure?	C
Listed on existing SURVEY?	Local District; NR District

**GENERAL INFORMATION**

CATEGORY	building	CURRENT FUNCTION	Domestic - single dwelling
CONDITION	good	HISTORIC FUNCTION	Domestic - single dwelling
INTEGRITY	minor alterations	REASON for SIGNIFICANCE	Unusual example of the style, with center gable and deep cornice returns on front elevation.
SECONDARY STRUCTURE	Detached garage		

ARCHITECTURAL DESCRIPTION

ARCHITECTURAL CLASSIFICATION	Colonial Revival	PLAN	rectangular
DETAILS		NO OF STORIES	2.5
BEGINYEAR	c. 1915	ROOF TYPE	Hipped
OTHER YEAR		ROOF MATERIAL	Asphalt - shingle
DATESOURCE	Surveyor	FOUNDATION	Concrete - block
WALL MATERIAL (current)	Aluminum	PORCH	Full front
WALL MATERIAL 2 (current)		WINDOW MATERIAL	Wood/Aluminum
WALL MATERIAL (original)	Wood	WINDOW MATERIAL	leaded glass
WALL MATERIAL 2 (original)		WINDOW TYPE	Single & Double hung
		WINDOW CONFIG	1/1; LG/1; 8/8
SIGNIFICANT FEATURES	Flared hipped roof with overhanging eaves; front and north side gables w/ deep cornice returns; historic hipped porch w/ rounded columns on concrete block piers (probably an historic alteration)--SEE CONTINUATION SHEET		
ALTERATIONS	Aluminum siding (not historic); replacement 1/1 windows in original openings (not historic); fixed shutters (not historic); 1 story rear addition; 8/8 wood windows on south elevation (historic)		

HISTORIC INFORMATION

HISTORIC NAME	
COMMON NAME	
COST	
ARCHITECT	
ARCHITECT2	
BUILDER	
ARCHITECT SOURCE	

HISTORIC INFO	
----------------------	--

PERMITS	
----------------	--

LANDSCAPE	Midblock on west side of residential street; front sidewalk; rear alley; similar setbacks; mature trees
------------------	---

COA DATE	
-----------------	--

COA DECISION	
---------------------	--

PREPARER	Lara Ramsey
-----------------	-------------

PREPARER ORGANIZATION	GRANACKI HISTORIC CONSULTANTS
------------------------------	-------------------------------

SURVEYDATE	11/27/2007
-------------------	------------

SURVEYAREA	NAPERVILLE
-------------------	------------



DIGITAL PHOTO ID	\\images\\brainard011s.jpg	DIGITAL PHOTO ID3	\\images\\brainard011s(3).jpg
DIGITAL PHOTO ID2	\\images\\brainard011s(2).jpg	DIGITAL PHOTO ID4	\\images\\brainard011s(4).jpg

City of NAPERVILLE

ILLINOIS URBAN ARCHITECTURAL AND HISTORICAL SURVEY CONTINUATION SHEET

STREET # 15

STREET N. BRAINARD STREET

ADDITIONAL PHOTOS OR INFORMATION

Front porch addition (historic--c. 1910); 1/1 replacement front windows (historic); 2 story front gable north/rear section may be early addition; 4/4 replacement windows on N. side (historic); rear deck add. (not historic); S. covered walkway; 1 story south/rear add. (c .1950); replacement wood siding and fixed shutters (not historic); Aluminum siding under eaves

STREET #	15
DIRECTION	N
STREET	BRAINARD
SUFFIX	ST
PIN	0818305007
LOCAL SIGNIFICANCE RATING	S
POTENTIAL IND NR? (Y or N)	N
Contributing to a NR DISTRICT?	C
Contributing secondary structure?	C
Listed on existing SURVEY?	IHSS (O); Local District; NR

**GENERAL INFORMATION**

CATEGORY	building	CURRENT FUNCTION	Domestic - multiple dwelling
CONDITION	good	HISTORIC FUNCTION	Domestic - single dwelling
INTEGRITY	minor alterations	REASON for SIGNIFICANCE	Solid, simple example of the style, with an historic porch addition.
SECONDARY STRUCTURE	Barn		

ARCHITECTURAL DESCRIPTION

ARCHITECTURAL CLASSIFICATION	Italianate	PLAN	rectangular
DETAILS		NO OF STORIES	2
BEGINYEAR	1876	ROOF TYPE	Front gable
OTHER YEAR		ROOF MATERIAL	Asphalt - shingle
DATESOURCE	Plaque	FOUNDATION	Parged/stone
WALL MATERIAL (current)	Asbestos shingle	PORCH	Full front
WALL MATERIAL 2 (current)		WINDOW MATERIAL	Wood
WALL MATERIAL (original)	Wood	WINDOW MATERIAL	
WALL MATERIAL 2 (original)		WINDOW TYPE	double hung
		WINDOW CONFIG	2/2 vert.; 1/1; 4/4
SIGNIFICANT FEATURES	Front gable roof; original 2/2 wood windows w/ triangular pediments over 2nd story windows; original entry doors w/ flattened arch panels and transom		
ALTERATIONS	Front porch addition (historic--c. 1905); 1/1 replacement front windows (historic); 2 story front gable north/rear section may be early addition; 4/4 replacement windows on N. side; rear deck add.; S. covered walkway--SEE CONTINUATION SHEET		

HISTORIC INFORMATION

HISTORIC NAME	Fehlmann, J. House
COMMON NAME	
COST	
ARCHITECT	
ARCHITECT2	
BUILDER	
ARCHITECT SOURCE	

HISTORIC INFO	
----------------------	--

PERMITS	
----------------	--

LANDSCAPE	Midblock on west side of residential street; front sidewalk; rear alley; similar setbacks; mature trees
------------------	---

COA DATE	
-----------------	--

COA DECISION	
---------------------	--

PREPARER	Lara Ramsey
-----------------	-------------

PREPARER ORGANIZATION	GRANACKI HISTORIC CONSULTANTS
------------------------------	-------------------------------

SURVEYDATE	11/27/2007
-------------------	------------

SURVEYAREA	NAPERVILLE
-------------------	------------



DIGITAL PHOTO ID \\Images\brainard015n.jpg

DIGITAL PHOTO ID2 \\Images\brainard015n(2).jpg

DIGITAL PHOTO ID3

DIGITAL PHOTOID4

\\Images\brainard015n(3).jpg

\\Images\brainard015n(4).jpg

City of NAPERVILLE

ILLINOIS URBAN ARCHITECTURAL AND HISTORICAL SURVEY CONTINUATION SHEET

STREET # 15

STREET S. BRAINARD STREET

ADDITIONAL PHOTOS OR INFORMATION

Significant Features

Hipped roof with front gable; 2 story 3-sided front window bay with center leaded glass windows; full front hipped porch w/ classical columns on shingled knee wall; north side rounded oriel bay with conical roof; historic 1/1 wood & leaded glass windows; north and south hipped dormers

Historic Information

House received plaque from the Naperville Heritage Society in 2006. The house was built in 1908 as a parsonage for Second Evangelical Church. The Jaeck family purchased it from the church and later deeded it to their daughter and son-in-law, Minnie & William C. Scherer.

STREET #	15
DIRECTION	S
STREET	BRAINARD
SUFFIX	ST
PIN	0818314010
LOCAL SIGNIFICANCE RATING	S
POTENTIAL IND NR? (Y or N)	N
Contributing to a NR DISTRICT?	C
Contributing secondary structure?	C
Listed on existing SURVEY?	Local District; NR District

**GENERAL INFORMATION**

CATEGORY	building	CURRENT FUNCTION	Domestic - single dwelling
CONDITION	excellent	HISTORIC FUNCTION	Religion - church-related residence
INTEGRITY	minor alterations	REASON for SIGNIFICANCE	Handsome Queen Anne with historic leaded glass windows and porch with classical columns.
SECONDARY STRUCTURE	Detached garage		

ARCHITECTURAL DESCRIPTION

ARCHITECTURAL CLASSIFICATION	Queen Anne - Free Classic	PLAN	Rectangular
DETAILS		NO OF STORIES	2.5
BEGINYEAR	c. 1908	ROOF TYPE	Gable on hip
OTHER YEAR		ROOF MATERIAL	Asphalt - shingle
DATESOURCE	Plaque	FOUNDATION	Concrete - block
WALL MATERIAL (current)	Wood	PORCH	Full front
WALL MATERIAL 2 (current)	Wood - shingle	WINDOW MATERIAL	Wood
WALL MATERIAL (original)	Wood	WINDOW MATERIAL	Leaded glass
WALL MATERIAL 2 (original)	Wood - shingle	WINDOW TYPE	Fixed/double hung
		WINDOW CONFIG	1/1; 1-light
SIGNIFICANT FEATURES	Hipped roof w/ front gable; 2 story 3-sided front window bay w/ center leaded glass windows; full front hipped porch w/ classical columns on shingled knee walls; north side rounded oriel bay w/ conical roof--SEE CONTINUATION SHEET		
ALTERATIONS	Replacement dormer windows (not historic); 1 story rear addition; wrought iron railings at front steps (not historic); replacement window in gable (not historic)		

HISTORIC INFORMATION

HISTORIC NAME	Second Evangelical Church Parsonage
COMMON NAME	
COST	
ARCHITECT	
ARCHITECT2	
BUILDER	
ARCHITECT SOURCE	

HISTORIC INFO	Reverend George Manshardt was first occupant. See continuation sheets.
----------------------	--

PERMITS	
----------------	--

LANDSCAPE	Midblock on west side of residential street; front sidewalk; rear alley; similar setbacks; mature trees
------------------	---

COA DATE	
-----------------	--

COA DECISION	
---------------------	--

PREPARER	Lara Ramsey
-----------------	-------------

PREPARER ORGANIZATION	GRANACKI HISTORIC CONSULTANTS
------------------------------	-------------------------------

SURVEYDATE	11/27/2007
-------------------	------------

SURVEYAREA	NAPERVILLE
-------------------	------------



DIGITAL PHOTO ID \\Images\brainard015s.jpg

DIGITAL PHOTO ID2 \\Images\brainard015s(2).jpg

DIGITAL PHOTO ID3

DIGITAL PHOTO ID4

\\Images\brainard015s(3).jpg

\\Images\brainard015s(4).jpg

STREET #	21
DIRECTION	S
STREET	BRAINARD
SUFFIX	ST
PIN	0818314011
LOCAL SIGNIFICANCE RATING	C
POTENTIAL IND NR? (Y or N)	N
Contributing to a NR DISTRICT?	C
Contributing secondary structure?	NC
Listed on existing SURVEY?	IHSS (O);Local District; NR D

**GENERAL INFORMATION**

CATEGORY	building	CURRENT FUNCTION	Domestic - single dwelling
CONDITION	excellent	HISTORIC FUNCTION	Domestic - single dwelling
INTEGRITY	minor alterations and addition(s)	REASON for SIGNIFICANCE	
SECONDARY STRUCTURE	Detached garage		

ARCHITECTURAL DESCRIPTION

ARCHITECTURAL CLASSIFICATION	L-Form with 2-story Wing	PLAN	L
DETAILS		NO OF STORIES	2
BEGINYEAR	c. 1880	ROOF TYPE	Cross gable
OTHER YEAR		ROOF MATERIAL	Asphalt - shingle
DATESOURCE	Surveyor	FOUNDATION	Stone
WALL MATERIAL (current)	Wood	PORCH	front
WALL MATERIAL 2 (current)		WINDOW MATERIAL	Vinyl
WALL MATERIAL (original)	Wood	WINDOW MATERIAL	Glass block
WALL MATERIAL 2 (original)		WINDOW TYPE	double hung/fixed
		WINDOW CONFIG	2/2 vertical
SIGNIFICANT FEATURES	Front gable bay with north side gable intersecting wing		
ALTERATIONS	2/2 replacement windows in altered openings (not historic); replacement siding (historically appropriate); replacement front porch (historic); replacement door (not historic); 2 story rear addition(historic); glass block windows in basement		

City of NAPERVILLE
ILLINOIS URBAN ARCHITECTURAL AND HISTORICAL SURVEY
CONTINUATION SHEET

STREET # 21

STREET S. BRAINARD STREET

ADDITIONAL PHOTOS OR INFORMATION

Historic Information

[taken from address files at Naperville Heritage Society Research Room]

Lot 4 Block 7 Delcar Sleight's Addition

From Samuel Barr to Leah Stone (WD) dated 10/4/1872---\$350.00

From Susan Stoner to Laura Ebright (WD) dated 6/13/1917--\$2,400.00

From Laura Ebright to George Koob, Jr. (WD) 1/24/1920--\$4,500.00

STREET #	21
DIRECTION	S
STREET	BRAINARD
SUFFIX	ST
PIN	0818314011
LOCAL SIGNIFICANCE RATING	C
POTENTIAL IND NR? (Y or N)	N
Contributing to a NR DISTRICT?	C
Contributing secondary structure?	NC
Listed on existing SURVEY?	IHSS (O);Local District; NR D

**GENERAL INFORMATION**

CATEGORY	building	CURRENT FUNCTION	Domestic - single dwelling
CONDITION	excellent	HISTORIC FUNCTION	Domestic - single dwelling
INTEGRITY	minor alterations and addition(s)	REASON for SIGNIFICANCE	
SECONDARY STRUCTURE	Detached garage		

ARCHITECTURAL DESCRIPTION

ARCHITECTURAL CLASSIFICATION	L-Form with 2-story Wing	PLAN	L
DETAILS		NO OF STORIES	2
BEGINYEAR	c. 1880	ROOF TYPE	Cross gable
OTHER YEAR		ROOF MATERIAL	Asphalt - shingle
DATESOURCE	Surveyor	FOUNDATION	Stone
WALL MATERIAL (current)	Wood	PORCH	front
WALL MATERIAL 2 (current)		WINDOW MATERIAL	Vinyl
WALL MATERIAL (original)	Wood	WINDOW MATERIAL	Glass block
WALL MATERIAL 2 (original)		WINDOW TYPE	double hung/fixed
		WINDOW CONFIG	2/2 vertical
SIGNIFICANT FEATURES	Front gable bay with north side gable intersecting wing		
ALTERATIONS	2/2 replacement windows in altered openings (not historic); replacement siding (historically appropriate); replacement front porch (historic); replacement door (not historic); 2 story rear addition(historic); glass block windows in basement		

HISTORIC INFORMATION

HISTORIC NAME	Stoner, Leah House
COMMON NAME	
COST	
ARCHITECT	
ARCHITECT2	
BUILDER	
ARCHITECT SOURCE	

HISTORIC INFO	
----------------------	--

PERMITS	According to title research on file at Naper Settlement, house was probably built in mid-1870s. See continuation sheet.
----------------	---

LANDSCAPE	Midblock on west side of residential street; front sidewalk; rear alley; similar setbacks; mature trees
------------------	---

COA DATE	
-----------------	--

COA DECISION	
---------------------	--

PREPARER	Lara Ramsey
-----------------	-------------

PREPARER ORGANIZATION	GRANACKI HISTORIC CONSULTANTS
------------------------------	-------------------------------

SURVEYDATE	11/27/2007
-------------------	------------

SURVEYAREA	NAPERVILLE
-------------------	------------



DIGITAL PHOTO ID	\\Images\brainard021s.jpg	DIGITAL PHOTO ID3	\\Images\brainard021s(3).jpg
DIGITAL PHOTO ID2	\\Images\brainard021s(2).jpg	DIGITAL PHOTO ID4	\\Images\brainard021s(4).jpg

STREET #	25
DIRECTION	N
STREET	BRAINARD
SUFFIX	ST
PIN	0818305012
LOCAL SIGNIFICANCE RATING	NC
POTENTIAL IND NR? (Y or N)	N
Contributing to a NR DISTRICT?	NC
Contributing secondary structure?	-
Listed on existing SURVEY?	Local District; NR District

**GENERAL INFORMATION**

CATEGORY	building	CURRENT FUNCTION	Religion - religious facility
CONDITION	excellent	HISTORIC FUNCTION	Religion - religious facility
INTEGRITY	not altered	REASON for SIGNIFICANCE	ALTERNATE ADDRESS IS 35 N. ELLSWORTH -- CHECK TO SEE IF THIS IS IN DISTRICT
SECONDARY STRUCTURE			

ARCHITECTURAL DESCRIPTION

ARCHITECTURAL CLASSIFICATION	Neo-Traditional	PLAN	Rectangular
DETAILS		NO OF STORIES	1
BEGINYEAR	c. 1995	ROOF TYPE	Front gable
OTHER YEAR		ROOF MATERIAL	Not visible
DATESOURCE	Surveyor	FOUNDATION	Concrete - poured
WALL MATERIAL (current)	Brick	PORCH	-
WALL MATERIAL 2 (current)		WINDOW MATERIAL	Aluminum
WALL MATERIAL (original)	Brick	WINDOW MATERIAL	
WALL MATERIAL 2 (original)		WINDOW TYPE	fixed
		WINDOW CONFIG	multi-light
SIGNIFICANT FEATURES			
ALTERATIONS			

HISTORIC INFORMATION

**HISTORIC
NAME**

**COMMON
NAME**

Part of St. Peter & Paul
Catholic Church

COST

ARCHITECT

ARCHITECT2

BUILDER

**ARCHITECT
SOURCE**

**HISTORIC
INFO**

PERMITS

LANDSCAPE

Midblock on west side of residential
street; front of building faces
Ellsworth; large front (west) lawn
with rounded wall at front; mature
trees

COA DATE

**COA
DECISION**

PREPARER

Lara Ramsey

**PREPARER
ORGANIZATION**

GRANACKI HISTORIC
CONSULTANTS

SURVEYDATE

11/27/2007

SURVEYAREA

NAPERVILLE



**DIGITAL
PHOTO ID**

\\images\\brainard
025n.jpg

**DIGITAL
PHOTO ID3**

\\images\\brainard025
n(3).jpg

**DIGITAL
PHOTO ID2**

\\images\\brainard
025n(2).jpg

**DIGITAL
PHOTO ID4**

\\images\\brainard025
n(4).jpg

STREET #	27
DIRECTION	S
STREET	BRAINARD
SUFFIX	ST
PIN	0818314012
LOCAL SIGNIFICANCE RATING	C
POTENTIAL IND NR? (Y or N)	N
Contributing to a NR DISTRICT?	C
Contributing secondary structure?	C
Listed on existing SURVEY?	Local District; NR District

**GENERAL INFORMATION**

CATEGORY	building	CURRENT FUNCTION	Domestic - single dwelling
CONDITION	good	HISTORIC FUNCTION	Domestic - single dwelling
INTEGRITY	minor alterations and addition(s)	REASON for SIGNIFICANCE	
SECONDARY STRUCTURE	Carriage House		

ARCHITECTURAL DESCRIPTION

ARCHITECTURAL CLASSIFICATION	Queen Anne	PLAN	L
DETAILS		NO OF STORIES	2
BEGINYEAR	c. 1905	ROOF TYPE	Multi-gable
OTHER YEAR		ROOF MATERIAL	Asphalt - shingle
DATESOURCE	Surveyor	FOUNDATION	Stone
WALL MATERIAL (current)	Wood	PORCH	Front entry
WALL MATERIAL 2 (current)		WINDOW MATERIAL	Wood
WALL MATERIAL (original)	Wood	WINDOW MATERIAL	Glass Block/Aluminum
WALL MATERIAL 2 (original)		WINDOW TYPE	double hung/fixed
		WINDOW CONFIG	3/1; multi-light; 1/1
SIGNIFICANT FEATURES	Side gable roof w/ cornice returns; front 2 story bay w/ pent front gable; inset front entry porch w/ paneled frieze, paired brackets, & square classical columns on solid knee wall; historic 1/1 wood double hung windows; S. square window bay w/ hip roof		
ALTERATIONS	1 story rear addition; replacement 3/1 windows in original openings (historic); replacement multi-light windows in altered openings on first floor (historic); Panels & brackets are new/salvaged, not appropriate		

HISTORIC INFORMATION

HISTORIC NAME	
COMMON NAME	
COST	
ARCHITECT	
ARCHITECT2	
BUILDER	
ARCHITECT SOURCE	

HISTORIC INFO	
----------------------	--

PERMITS	
----------------	--

LANDSCAPE	Midblock on west side of residential street; front sidewalk; rear driveway; similar setbacks; mature trees
------------------	--

COA DATE	
-----------------	--

COA DECISION	
---------------------	--

PREPARER	Lara Ramsey
-----------------	-------------

PREPARER ORGANIZATION	GRANACKI HISTORIC CONSULTANTS
------------------------------	-------------------------------

SURVEYDATE	11/27/2007
-------------------	------------

SURVEYAREA	NAPERVILLE
-------------------	------------



DIGITAL PHOTO ID \Images\brainard027s.jpg

DIGITAL PHOTO ID2 \Images\brainard027s(2).jpg

DIGITAL PHOTO ID3

DIGITAL PHOTO ID4

\Images\brainard027s(3).jpg

\Images\brainard027s(4).jpg

City of NAPERVILLE

ILLINOIS URBAN ARCHITECTURAL AND HISTORICAL SURVEY CONTINUATION SHEET

STREET # 30

STREET N. BRAINARD STREET

ADDITIONAL PHOTOS OR INFORMATION

Significant Features

North section is original building, middle section is either original or very early addition (but has been recently altered and added to), south section is historic (c. 1890) addition; mansard roof with modillion cornice and paired scrolled brackets on original, north section; projecting square bay in center of original building (north section) with copper pinnacle on roof; rusticated limestone exterior; round arch and segmental arch window openings; flat arch lintels on first story, flanged segmental arch dormers

Alterations

Original raised front entry was in center of north section—steps to entry have been removed, and entry has been closed with balcony; entry on south (c. 1890) addition was also raised, but has been filled in with ground level window (not historic); top two stories (including mansard roof) of center section are addition from 1998 renovation; south section originally had hipped roof—mansard is an historic alteration; vinyl replacement windows in original openings; replacement entry doors in middle section (probably in altered openings); below grade entry doors on east elevation; elevated patio addition to north elevation

Historic Information

From the DuPage County Cultural and Historical Inventory (1993-1996):

“Old Main was the original building of the present campus of North Central College. It was built in 1870 [note—this date conflicts with the plaque on the building that says “class of 1879”] after the college was moved from Plainfield to Naperville. The college was founded by the Evangelical Association. This one building once held all the classrooms, a chapel, meeting halls, a men’s dormitory, library, and an apartment. The building was originally heated by fireplaces and stoves. When the south wing was added in 1891, a heating system was installed. A music department and women’s dormitory were also later added. In 1873, the cost of attending college here was approximately \$50, including tuition, room, board, fuel, and laundry.”

Building was renovated in 1998---[from THE SUN, 10/9/1998, p. 4]:

“The ‘new’ Old Main has an additional 5,000 square feet, provided by two floors built to connect the north and south towers....At one time, Old Main was North Central College. Built in 1870, when the college moved to Naperville from Plainfield, Old Main was constructed without the benefit of blueprints. To get from one tower to the other, you had to go down steep stairs to the bottom of the building and back up again. ‘It was a building with character that became a character,’ Wilde said. People lived, worked and attended classes in the old building.”

STREET #	30
DIRECTION	N
STREET	BRAINARD
SUFFIX	ST
PIN	0818306001
LOCAL SIGNIFICANCE RATING	S
POTENTIAL IND NR? (Y or N)	Y
Contributing to a NR DISTRICT?	C
Contributing secondary structure?	-
Listed on existing SURVEY?	Local District; NR District

**GENERAL INFORMATION**

CATEGORY	building	CURRENT FUNCTION	Education - college
CONDITION	excellent	HISTORIC FUNCTION	Education - college
INTEGRITY	minor alterations	REASON for SIGNIFICANCE	Impressive Second Empire stone building is architecturally significant and historically significant as North Central College's first building in Naperville. Vinyl windows have somewhat lessened its integrity.
SECONDARY STRUCTURE			

ARCHITECTURAL DESCRIPTION

ARCHITECTURAL CLASSIFICATION	Second Empire	PLAN	rectangular
DETAILS		NO OF STORIES	5
BEGINYEAR	1871	ROOF TYPE	Mansard
OTHER YEAR		ROOF MATERIAL	Asphalt - shingle
DATESOURCE	NCC	FOUNDATION	Stone
WALL MATERIAL (current)	Stone	PORCH	-
WALL MATERIAL 2 (current)		WINDOW MATERIAL	Vinyl
WALL MATERIAL (original)	Stone	WINDOW MATERIAL	
WALL MATERIAL 2 (original)		WINDOW TYPE	double hung
		WINDOW CONFIG	4/4; 1/1
SIGNIFICANT FEATURES	North section is original building, middle section is either original or very early addition, south section is historic (c. 1890) addition; mansard roof with modillion cornice and paired scrolled brackets--SEE CONTINUATION SHEET		
ALTERATIONS	Original raised front entry was in center of north section—steps to entry have been removed, and entry has been closed with balcony; entry on south (c. 1890) addition was also raised---SEE CONTINUATION SHEET Removal of portion of window for air supply (admin. approval COA# 17-179)		

HISTORIC INFORMATION

HISTORIC NAME	Old Main
COMMON NAME	
COST	
ARCHITECT	
ARCHITECT2	
BUILDER	
ARCHITECT SOURCE	

HISTORIC INFO	Date panel on original bay says "Class of 1879"--See continuation sheet.
----------------------	--

PERMITS	THE SUN 10/9/1998--south wing completed in 1891. Two stories connecting north and south wing were added as part of a 1998 renovation of the building.
----------------	---

LANDSCAPE	In center of main campus block for North Central College; building faces west; concrete walkways on all sides; mature trees
------------------	---

COA DATE	
-----------------	--

COA DECISION	
---------------------	--

PREPARER	Lara Ramsey
-----------------	-------------

PREPARER ORGANIZATION	GRANACKI HISTORIC CONSULTANTS
------------------------------	-------------------------------

SURVEYDATE	11/27/2007
-------------------	------------

SURVEYAREA	NAPERVILLE
-------------------	------------



DIGITAL PHOTO ID \\images\brainard030n.jpg

DIGITAL PHOTO ID2 \\images\brainard030n(2).jpg

DIGITAL PHOTO ID3

DIGITAL PHOTO ID4

\\images\brainard030n(3).jpg

\\images\brainard030n(4).jpg

STREET #	30
DIRECTION	S
STREET	BRAINARD
SUFFIX	ST
PIN	0818315003
LOCAL SIGNIFICANCE RATING	S
POTENTIAL IND NR? (Y or N)	N
Contributing to a NR DISTRICT?	C
Contributing secondary structure?	NC
Listed on existing SURVEY?	Local District; NR District

**GENERAL INFORMATION**

CATEGORY	building	CURRENT FUNCTION	Domestic - multiple dwelling
CONDITION	excellent	HISTORIC FUNCTION	Domestic - single dwelling
INTEGRITY	minor alterations and addition(s)	REASON for SIGNIFICANCE	This impressive 1870 Italianate residence was home to Reverend Heidner, professor of German languages at North Central College.
SECONDARY STRUCTURE	Detached garage shed (NC)		

ARCHITECTURAL DESCRIPTION

ARCHITECTURAL CLASSIFICATION	Italianate	PLAN	irregular
DETAILS		NO OF STORIES	2
BEGINYEAR	1870	ROOF TYPE	Hipped
OTHER YEAR		ROOF MATERIAL	Asphalt - shingle
DATESOURCE	Plaque	FOUNDATION	Stone
WALL MATERIAL (current)	Wood	PORCH	Front/side
WALL MATERIAL 2 (current)		WINDOW MATERIAL	Wood
WALL MATERIAL (original)	Wood	WINDOW MATERIAL	
WALL MATERIAL 2 (original)		WINDOW TYPE	Double & single hung
		WINDOW CONFIG	4/4; 2/2 vert; 1/2; 2/2
SIGNIFICANT FEATURES	Hipped roof w/ paired brackets & modillions; 3-sided S. window bay; paired front doors w/ segmental arch transom; round arch window openings on 2nd story, segmental arch openings on 1st story; historic 4/4 & 2/2 vertical 2nd story windows		
ALTERATIONS	2/2 horizontal windows are historic replacement; 1/2 windows are non historic; replacement siding; replacement columns & concrete block piers on front porch (historic); rear N. & S. Porch is historic, but have replacement columns & brackets		

HISTORIC INFORMATION

HISTORIC NAME	Heidner, Rev. House
COMMON NAME	
COST	
ARCHITECT	
ARCHITECT2	
BUILDER	
ARCHITECT SOURCE	

HISTORIC INFO	Heidner was professor of German languages at North Central College. See continuation sheet.
----------------------	---

PERMITS	Sanborns dating from 1898 show the rear north and south porches in essentially the same configuration as they are now.
----------------	--

LANDSCAPE	Northeast corner of Brainard & Van Buren; front and south sidewalks; rear alley; large north side yard; mature trees
------------------	--

COA DATE	
-----------------	--

COA DECISION	
---------------------	--

PREPARER	Lara Ramsey
-----------------	-------------

PREPARER ORGANIZATION	GRANACKI HISTORIC CONSULTANTS
------------------------------	-------------------------------

SURVEYDATE	11/27/2007
-------------------	------------

SURVEYAREA	NAPERVILLE
-------------------	------------



DIGITAL PHOTO ID \\images\brainard 030s.jpg

DIGITAL PHOTO ID3 \\images\brainard030s (4).jpg

DIGITAL PHOTO ID2 \\images\brainard 030s(5).jpg

DIGITAL PHOTO ID4

STREET #	31
DIRECTION	S
STREET	BRAINARD
SUFFIX	ST
PIN	0818314013
LOCAL SIGNIFICANCE RATING	S
POTENTIAL IND NR? (Y or N)	N
Contributing to a NR DISTRICT?	C
Contributing secondary structure?	NC
Listed on existing SURVEY?	Local District; NR District

**GENERAL INFORMATION**

CATEGORY	building	CURRENT FUNCTION	Domestic - single dwelling
CONDITION	excellent	HISTORIC FUNCTION	Domestic - single dwelling
INTEGRITY	minor alterations and addition(s)	REASON for SIGNIFICANCE	Even with alterations, this remains a solid example of a mid-1870s Italianate residence.
SECONDARY STRUCTURE	Detached garage		

ARCHITECTURAL DESCRIPTION

ARCHITECTURAL CLASSIFICATION	Italianate	PLAN	Rectangular
DETAILS		NO OF STORIES	2
BEGINYEAR	1873	ROOF TYPE	Multi-gable
OTHER YEAR		ROOF MATERIAL	Asphalt - shingle
DATESOURCE	Plaque	FOUNDATION	Stone
WALL MATERIAL (current)	Wood	PORCH	Front/side canopies
WALL MATERIAL 2 (current)		WINDOW MATERIAL	Wood
WALL MATERIAL (original)	Wood	WINDOW MATERIAL	
WALL MATERIAL 2 (original)		WINDOW TYPE	double hung
		WINDOW CONFIG	6/6
SIGNIFICANT FEATURES	Front gable rectangular bay; side gabled rear wing facing S. onto Van Buren (may be early add.); historic entry w/ recessed double wood door, 2-light transom, & paneled wood sides; scrolled brackets under eaves; pediment lintels above window openings		
ALTERATIONS	Replacement windows in original openings (historic); front and south entry canopies and steps (not historic); replacement siding (not historic)		

HISTORIC INFORMATION

HISTORIC NAME	Stephens, Mathias A. House
COMMON NAME	
COST	
ARCHITECT	
ARCHITECT2	
BUILDER	Stephens, Mathias A.
ARCHITECT SOURCE	

HISTORIC INFO Stephens, a carpenter, bought the lot in 1871 and built the house in 1873. See continuation sheet.

PERMITS Sanborn maps dating from 1893 show rear gabled 2 story section of house; Sanborns from 1893 through 1943 show bldg w/ full front porch.

LANDSCAPE Northwest corner of Van Buren and Brainard; front and south sidewalks; wrought iron fence; similar setbacks; mature trees

COA DATE

COA DECISION

PREPARER Lara Ramsey

PREPARER ORGANIZATION GRANACKI HISTORIC CONSULTANTS

SURVEYDATE 11/27/2007

SURVEYAREA NAPERVILLE



DIGITAL PHOTO ID \Images\brainard031s.jpg

DIGITAL PHOTO ID2 \Images\brainard031s(2).jpg

DIGITAL PHOTO ID3

DIGITAL PHOTOID4

\Images\brainard031s(3).jpg

\Images\brainard031s(4).jpg

STREET #	40
DIRECTION	N
STREET	BRAINARD
SUFFIX	ST
PIN	0818306001
LOCAL SIGNIFICANCE RATING	NC
POTENTIAL IND NR? (Y or N)	N
Contributing to a NR DISTRICT?	NC
Contributing secondary structure?	-
Listed on existing SURVEY?	Local District; NR District

**GENERAL INFORMATION**

CATEGORY	building	CURRENT FUNCTION	Education - college
CONDITION	excellent	HISTORIC FUNCTION	Education - college
INTEGRITY	not altered	REASON for SIGNIFICANCE	
SECONDARY STRUCTURE			

ARCHITECTURAL DESCRIPTION

ARCHITECTURAL CLASSIFICATION	International Style	PLAN	Rectangular
DETAILS		NO OF STORIES	1+bsm
BEGINYEAR	1969	ROOF TYPE	Flat
OTHER YEAR		ROOF MATERIAL	Not visible
DATESOURCE	NCC	FOUNDATION	Concrete - poured
WALL MATERIAL (current)	Brick	PORCH	-
WALL MATERIAL 2 (current)	Concrete	WINDOW MATERIAL	Metal
WALL MATERIAL (original)	Brick	WINDOW MATERIAL	
WALL MATERIAL 2 (original)	Concrete	WINDOW TYPE	fixed/awning
		WINDOW CONFIG	1-light
SIGNIFICANT FEATURES			
ALTERATIONS	Create and change two window openings on the west side (HPC approval COA# 17-1672)		

HISTORIC INFORMATION

HISTORIC NAME Kroehler, Peter Kenneth
Science Center

COMMON NAME

COST

ARCHITECT

ARCHITECT2

BUILDER

ARCHITECT SOURCE

HISTORIC INFO

PERMITS

LANDSCAPE Midblock on east side of Brainard, at west edge of main campus block; front façade facades east; walkways; mature trees; courtyard east of building

COA DATE

COA DECISION

PREPARER Lara Ramsey

PREPARER ORGANIZATION GRANACKI HISTORIC CONSULTANTS

SURVEYDATE 11/27/2007

SURVEYAREA NAPERVILLE



DIGITAL PHOTO ID

\\images\\brainard040n.jpg

DIGITAL PHOTO ID3

\\images\\brainard040n(3).jpg

DIGITAL PHOTO ID2

\\images\\brainard040n(2).jpg

DIGITAL PHOTO ID4

\\images\\brainard040n(4).jpg

STREET #	103
DIRECTION	N
STREET	BRAINARD
SUFFIX	ST
PIN	0818302015
LOCAL SIGNIFICANCE RATING	NC
POTENTIAL IND NR? (Y or N)	N
Contributing to a NR DISTRICT?	NC
Contributing secondary structure?	-
Listed on existing SURVEY?	Local District; NR District

**GENERAL INFORMATION**

CATEGORY	building	CURRENT FUNCTION	Religion - church-related residence
CONDITION	excellent	HISTORIC FUNCTION	Religion - church-related residence
INTEGRITY	not altered	REASON for SIGNIFICANCE	
SECONDARY STRUCTURE			

ARCHITECTURAL DESCRIPTION

ARCHITECTURAL CLASSIFICATION	Neo-Traditional	PLAN	rectangular
DETAILS		NO OF STORIES	2
BEGIN YEAR	1996	ROOF TYPE	Hipped
OTHER YEAR		ROOF MATERIAL	Wood - shingle
DATE SOURCE	Corner stone	FOUNDATION	Concrete - poured
WALL MATERIAL (current)	Brick veneer	PORCH	-
WALL MATERIAL 2 (current)		WINDOW MATERIAL	Aluminum clad
WALL MATERIAL (original)	Brick veneer	WINDOW MATERIAL	
WALL MATERIAL 2 (original)		WINDOW TYPE	double hung
		WINDOW CONFIG	8/8
SIGNIFICANT FEATURES			
ALTERATIONS			

HISTORIC INFORMATION

HISTORIC NAME

COMMON NAME

COST

ARCHITECT

ARCHITECT2

BUILDER

ARCHITECT SOURCE

HISTORIC INFO

PERMITS

LANDSCAPE

COA DATE

COA DECISION

PREPARER

PREPARER ORGANIZATION

SURVEYDATE

SURVEYAREA

103 N BRAINARD



DIGITAL PHOTO ID

DIGITAL PHOTO ID2

DIGITAL PHOTO ID3

DIGITAL PHOTO ID4

STREET #	106
DIRECTION	S
STREET	BRAINARD
SUFFIX	ST
PIN	0818320001
LOCAL SIGNIFICANCE RATING	NC
POTENTIAL IND NR? (Y or N)	N
Contributing to a NR DISTRICT?	NC
Contributing secondary structure?	
Listed on existing SURVEY?	Local District; NR District

**GENERAL INFORMATION**

CATEGORY	site	CURRENT FUNCTION	Landscape - parking lot
CONDITION		HISTORIC FUNCTION	
INTEGRITY		REASON for SIGNIFICANCE	
SECONDARY STRUCTURE			

ARCHITECTURAL DESCRIPTION

ARCHITECTURAL CLASSIFICATION	Parking Lot	PLAN	
DETAILS		NO OF STORIES	
BEGINYEAR		ROOF TYPE	
OTHER YEAR		ROOF MATERIAL	
DATESOURCE		FOUNDATION	
WALL MATERIAL (current)		PORCH	
WALL MATERIAL 2 (current)		WINDOW MATERIAL	
WALL MATERIAL (original)		WINDOW MATERIAL	
WALL MATERIAL 2 (original)		WINDOW TYPE	
		WINDOW CONFIG	
SIGNIFICANT FEATURES			
ALTERATIONS	Two new access drives on Van Buren Ave for renovated parking lot (HPC approval COA#12-2643)		

HISTORIC INFORMATION

HISTORIC NAME

COMMON NAME

COST

ARCHITECT

ARCHITECT2

BUILDER

ARCHITECT SOURCE

HISTORIC INFO

PERMITS

LANDSCAPE

COA DATE

COA DECISION

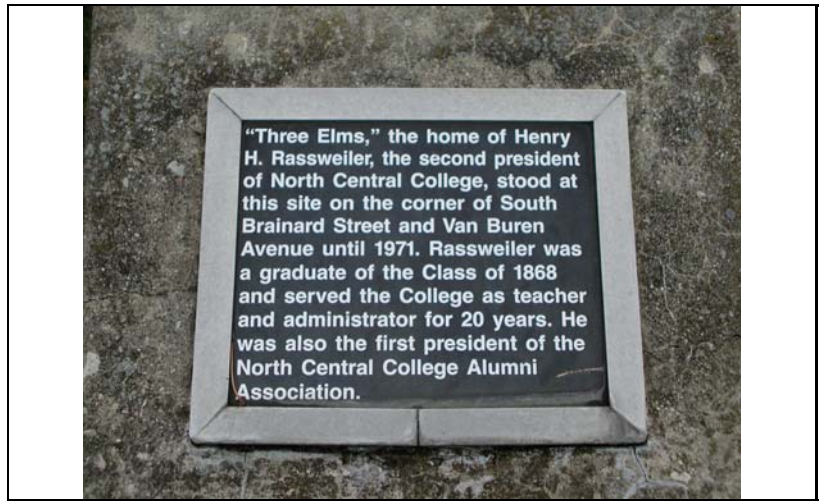
PREPARER

PREPARER ORGANIZATION

SURVEYDATE

SURVEYAREA

106 S BRAINARD



DIGITAL PHOTO ID

DIGITAL PHOTO ID3

DIGITAL PHOTO ID2

DIGITAL PHOTOID4

STREET #	109
DIRECTION	S
STREET	BRAINARD
SUFFIX	ST
PIN	0818319012
LOCAL SIGNIFICANCE RATING	S
POTENTIAL IND NR? (Y or N)	N
Contributing to a NR DISTRICT?	C
Contributing secondary structure?	NC
Listed on existing SURVEY?	Local District; NR District

**GENERAL INFORMATION**

CATEGORY	building	CURRENT FUNCTION	Domestic - single dwelling
CONDITION	excellent	HISTORIC FUNCTION	Domestic - single dwelling
INTEGRITY	minor alterations and addition(s)	REASON for SIGNIFICANCE	Impressive Shingle Style residence with polygonal corner tower.
SECONDARY STRUCTURE	Detached garage		

ARCHITECTURAL DESCRIPTION

ARCHITECTURAL CLASSIFICATION	Shingle Style	PLAN	irregular
DETAILS		NO OF STORIES	2.5
BEGINYEAR	1883	ROOF TYPE	Combination
OTHER YEAR		ROOF MATERIAL	Wood - shingle
DATESOURCE	Owner	FOUNDATION	Stone
WALL MATERIAL (current)	Wood	PORCH	Wrap around
WALL MATERIAL 2 (current)	Wood - shingle	WINDOW MATERIAL	Aluminum
WALL MATERIAL (original)	Wood	WINDOW MATERIAL	Wood
WALL MATERIAL 2 (original)	Wood - shingle	WINDOW TYPE	double hung/fixed
		WINDOW CONFIG	1/1; multi-light
SIGNIFICANT FEATURES	Hipped roof; 2 story north and south side projecting bays; shingled 2nd story; southeast corner polygonal tower with foliate frieze, square multi-light windows and bellcast roof; flared hipped roof dormers		
ALTERATIONS	Replacement siding; 1/1 replacement windows in original openings; 1 story rear addition; wraparound porch w/ north & south steps & classical columns (not historic--may be extension of original porch) In kind shingle replacement (admin. approval COA#16-3264)		

HISTORIC INFORMATION

HISTORIC NAME

COMMON NAME

COST

ARCHITECT

ARCHITECT2

BUILDER

ARCHITECT SOURCE

HISTORIC INFO

PERMITS

LANDSCAPE Southwest corner of Brainard and Van Buren; front and north sidewalks; rear driveway; similar setbacks; mature trees

COA DATE

COA DECISION

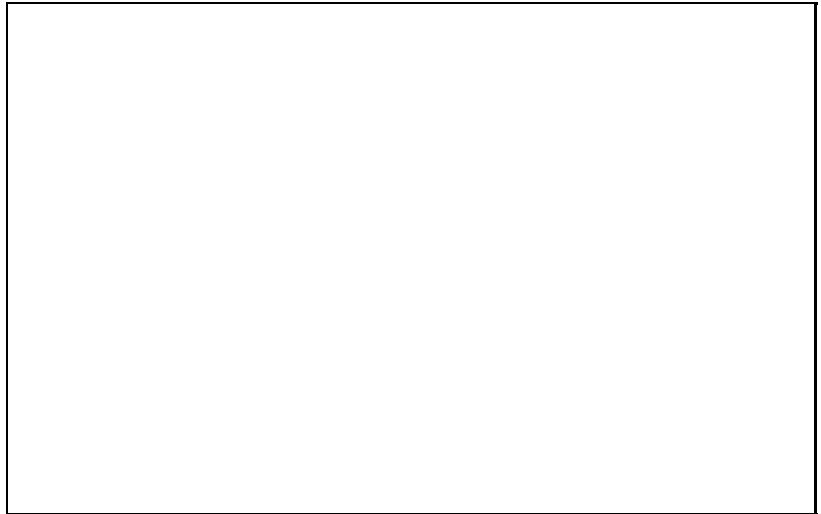
PREPARER

PREPARER ORGANIZATION

SURVEYDATE

SURVEYAREA

109 S BRAINARD



DIGITAL PHOTO ID

DIGITAL PHOTO ID2

DIGITAL PHOTO ID3

DIGITAL PHOTO ID4

STREET #	111-115
DIRECTION	S
STREET	BRAINARD
SUFFIX	ST
PIN	0818319013
LOCAL SIGNIFICANCE RATING	NC
POTENTIAL IND NR? (Y or N)	N
Contributing to a NR DISTRICT?	NC
Contributing secondary structure?	-
Listed on existing SURVEY?	Local District; NR District

**GENERAL INFORMATION**

CATEGORY	building	CURRENT FUNCTION	Domestic - multiple dwelling
CONDITION	good	HISTORIC FUNCTION	Domestic - multiple dwelling
INTEGRITY	not altered	REASON for SIGNIFICANCE	
SECONDARY STRUCTURE			

ARCHITECTURAL DESCRIPTION

ARCHITECTURAL CLASSIFICATION	Duplex	PLAN	rectangular
DETAILS		NO OF STORIES	2
BEGINYEAR	1980	ROOF TYPE	Side gable
OTHER YEAR		ROOF MATERIAL	Asphalt - shingle
DATESOURCE	Owner	FOUNDATION	Concrete - poured
WALL MATERIAL (current)	Brick	PORCH	-
WALL MATERIAL 2 (current)	wood	WINDOW MATERIAL	Wood
WALL MATERIAL (original)	Brick	WINDOW MATERIAL	
WALL MATERIAL 2 (original)	Wood	WINDOW TYPE	double hung/fixed
		WINDOW CONFIG	6/6; multi-light
SIGNIFICANT FEATURES			
ALTERATIONS			

HISTORIC INFORMATION

**HISTORIC
NAME**

**COMMON
NAME**

COST

ARCHITECT

ARCHITECT2

BUILDER

**ARCHITECT
SOURCE**

**HISTORIC
INFO**

PERMITS

LANDSCAPE

Midblock on west side of residential
street; front sidewalk; rear alley;
similar setbacks; mature trees

COA DATE

**COA
DECISION**

PREPARER

**PREPARER
ORGANIZATION**

SURVEYDATE

SURVEYAREA

111-115 S BRAINARD



**DIGITAL
PHOTO ID**

\\images\\brainard
111-115s.jpg

**DIGITAL
PHOTO ID3**

\\images\\brainard111-
115s(3).jpg

**DIGITAL
PHOTO ID2**

\\images\\brainard
111-115s(2).jpg

**DIGITAL
PHOTO ID4**

\\images\\brainard111-
115s(4).jpg

STREET #	115
DIRECTION	N
STREET	BRAINARD
SUFFIX	ST
PIN	0818302010
LOCAL SIGNIFICANCE RATING	S
POTENTIAL IND NR? (Y or N)	N
Contributing to a NR DISTRICT?	C
Contributing secondary structure?	C
Listed on existing SURVEY?	Local District; NR District

**GENERAL INFORMATION**

CATEGORY	building	CURRENT FUNCTION	Domestic - single dwelling
CONDITION	excellent	HISTORIC FUNCTION	Domestic - single dwelling
INTEGRITY	minor alterations and addition(s)	REASON for SIGNIFICANCE	Fine late-19th century Queen Anne with historic concrete block front porch.
SECONDARY STRUCTURE	Detached garage		

ARCHITECTURAL DESCRIPTION

ARCHITECTURAL CLASSIFICATION	Queen Anne	PLAN	irregular
DETAILS		NO OF STORIES	2.5
BEGINYEAR	c. 1895	ROOF TYPE	Front gable
OTHER YEAR		ROOF MATERIAL	Asphalt - shingle
DATESOURCE	surveyor	FOUNDATION	Stone
WALL MATERIAL (current)	Wood	PORCH	Full front
WALL MATERIAL 2 (current)	Wood - shingle	WINDOW MATERIAL	Wood
WALL MATERIAL (original)	Wood	WINDOW MATERIAL	Stained glass
WALL MATERIAL 2 (original)	Wood - shingle	WINDOW TYPE	double hung/fixed
		WINDOW CONFIG	1/1; 12/1; 1-light
SIGNIFICANT FEATURES	Front gable roof w/ cornice returns and wood shingles under gable; side gable north and south side bays w/ 1st story cutaway corners; historic wood door; 1/1 historic wood windows		
ALTERATIONS	Replacement front porch (c. 1910); stained glass window above porch (may be salvaged window); 2 story rear/north addition (1910s)		

HISTORIC INFORMATION

HISTORIC NAME	
COMMON NAME	
COST	
ARCHITECT	
ARCHITECT2	
BUILDER	
ARCHITECT SOURCE	

HISTORIC INFO	
---------------	--

PERMITS	
---------	--

LANDSCAPE	Midblock on west side of residential street; front sidewalk; side driveway; similar setbacks; mature trees
-----------	--

COA DATE	
----------	--

COA DECISION	
--------------	--

PREPARER	Lara Ramsey
----------	-------------

PREPARER ORGANIZATION	GRANACKI HISTORIC CONSULTANTS
-----------------------	-------------------------------

SURVEYDATE	11/27/2007
------------	------------

SURVEYAREA	NAPERVILLE
------------	------------

115 N BRAINARD



DIGITAL PHOTO ID
\\images\brainard115n.jpg

DIGITAL PHOTO ID2
\\images\brainard115n(2).jpg

DIGITAL PHOTO ID3

DIGITAL PHOTO ID4

\\images\brainard115n(3).jpg

\\images\brainard115n(4).jpg

STREET #	116
DIRECTION	S
STREET	BRAINARD
SUFFIX	ST
PIN	0818320002
LOCAL SIGNIFICANCE RATING	S
POTENTIAL IND NR? (Y or N)	N
Contributing to a NR DISTRICT?	C
Contributing secondary structure?	-
Listed on existing SURVEY?	Local District; NR District

**GENERAL INFORMATION**

CATEGORY	building	CURRENT FUNCTION	Education - college
CONDITION	good	HISTORIC FUNCTION	Domestic - single dwelling
INTEGRITY	minor alterations	REASON for SIGNIFICANCE	Intact and nicely detailed 1920s Colonial Revival with many original features.
SECONDARY STRUCTURE			

ARCHITECTURAL DESCRIPTION

ARCHITECTURAL CLASSIFICATION	Colonial Revival	PLAN	rectangular
DETAILS		NO OF STORIES	2
BEGINYEAR	c. 1925	ROOF TYPE	Side gable
OTHER YEAR		ROOF MATERIAL	Asphalt - shingle
DATESOURCE	Surveyor	FOUNDATION	Concrete - poured
WALL MATERIAL (current)	Brick	PORCH	Front entry
WALL MATERIAL 2 (current)		WINDOW MATERIAL	Wood
WALL MATERIAL (original)	Brick	WINDOW MATERIAL	
WALL MATERIAL 2 (original)		WINDOW TYPE	double hung
		WINDOW CONFIG	4/1; 3/1
SIGNIFICANT FEATURES	Side gable roof with north end chimney and cornice returns; center eyebrow window; symmetrical front façade; center entry with single sidelights; historic 4/1 and 3/1 wood windows		
ALTERATIONS	Front porch with concrete stoop and wrought iron railings (post-1943); 1 story rear addition (may have originally been rear porch that was enclosed); wood exterior stair addition		

HISTORIC INFORMATION

HISTORIC NAME	Boecker, Peter house
COMMON NAME	
COST	
ARCHITECT	
ARCHITECT2	
BUILDER	
ARCHITECT SOURCE	

HISTORIC INFO	
----------------------	--

PERMITS	Sanborn map from 1943 (Sheet 15) shows house with no front entry porch.
----------------	---

LANDSCAPE	Midblock on east side of residential street; front sidewalks; rear alley; parking lot to north; similar setbacks; mature trees
------------------	--

COA DATE	
-----------------	--

COA DECISION	
---------------------	--

PREPARER	Lara Ramsey
-----------------	-------------

PREPARER ORGANIZATION	GRANACKI HISTORIC CONSULTANTS
------------------------------	-------------------------------

SURVEYDATE	11/27/2007
-------------------	------------

SURVEYAREA	NAPERVILLE
-------------------	------------



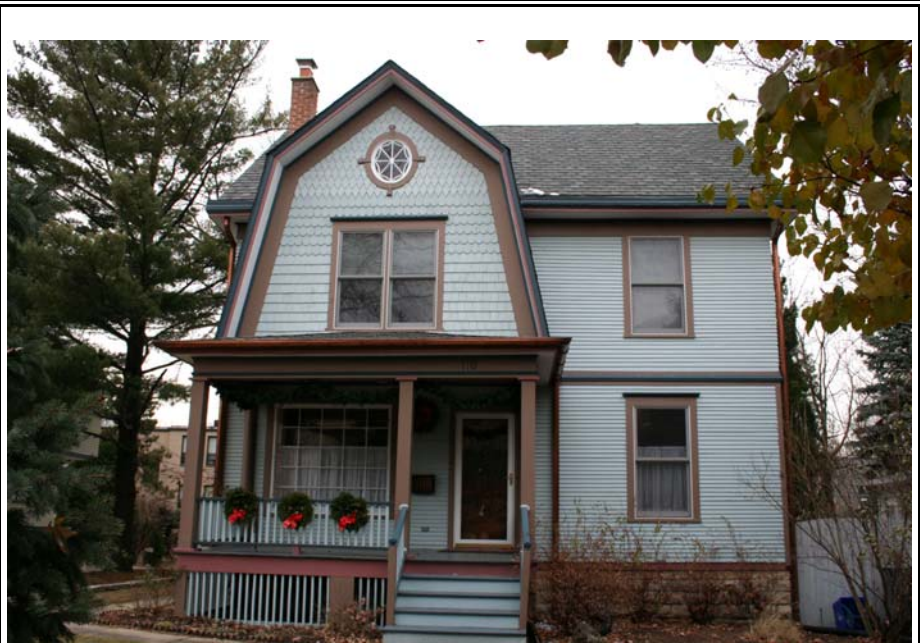
DIGITAL PHOTO ID \\Images\brainard116s.jpg

DIGITAL PHOTO ID2 \\Images\brainard116s(2).jpg

DIGITAL PHOTO ID3 \\Images\brainard116s(3).jpg

DIGITAL PHOTO ID4 \\Images\brainard116s(4).jpg

STREET #	119
DIRECTION	N
STREET	BRAINARD
SUFFIX	ST
PIN	0818302009
LOCAL SIGNIFICANCE RATING	S
POTENTIAL IND NR? (Y or N)	N
Contributing to a NR DISTRICT?	C
Contributing secondary structure?	C
Listed on existing SURVEY?	IHSS (O); Local District; NR

**GENERAL INFORMATION**

CATEGORY	building	CURRENT FUNCTION	Domestic - single dwelling
CONDITION	excellent	HISTORIC FUNCTION	Domestic - single dwelling
INTEGRITY	minor alterations	REASON for SIGNIFICANCE	
SECONDARY STRUCTURE	Detached garage		

ARCHITECTURAL DESCRIPTION

ARCHITECTURAL CLASSIFICATION	Shingle Style	PLAN	Rectangular
DETAILS		NO OF STORIES	2.5
BEGINYEAR	C. 1900	ROOF TYPE	Multi-gable
OTHER YEAR		ROOF MATERIAL	Asphalt - shingle
DATESOURCE	Surveyor	FOUNDATION	Stone
WALL MATERIAL (current)	Wood	PORCH	Front
WALL MATERIAL 2 (current)	Wood - shingle	WINDOW MATERIAL	Aluminum clad
WALL MATERIAL (original)	Wood	WINDOW MATERIAL	wood/glass block
WALL MATERIAL 2 (original)	Wood - shingle	WINDOW TYPE	double hung/fixed
		WINDOW CONFIG	1/1; multi-light
SIGNIFICANT FEATURES	Side gable main roof w/ cornice returns; front 2nd story gambrel bay w/ historic wood bulls eye window; simple classical wood lintels; rounded engaged columns at front porch		
ALTERATIONS	Replacement 1/1 Aluminum windows in original openings; multi-light fixed window under porch (historic replacement); replacement front porch; glass block basement windows		

HISTORIC INFORMATION

**HISTORIC
NAME**

**COMMON
NAME**

COST

ARCHITECT

ARCHITECT2

BUILDER

**ARCHITECT
SOURCE**

**HISTORIC
INFO**

PERMITS

LANDSCAPE

Midblock on west side of residential street; front sidewalk; rear alley; rear wood fence; similar setbacks; mature trees

COA DATE

**COA
DECISION**

PREPARER

Lara Ramsey

**PREPARER
ORGANIZATION**

GRANACKI HISTORIC
CONSULTANTS

SURVEYDATE

11/27/2007

SURVEYAREA

NAPERVILLE

119 N BRAINARD



**DIGITAL
PHOTO ID**

\\images\\brainard
119n.jpg

**DIGITAL
PHOTO ID3**

\\images\\brainard119
n(3).jpg

**DIGITAL
PHOTO ID2**

\\images\\brainard
119n(2).jpg

**DIGITAL
PHOTO ID4**

\\images\\brainard119
n(4).jpg

STREET #	119
DIRECTION	S
STREET	BRAINARD
SUFFIX	ST
PIN	0818319009
LOCAL SIGNIFICANCE RATING	S
POTENTIAL IND NR? (Y or N)	N
Contributing to a NR DISTRICT?	C
Contributing secondary structure?	-
Listed on existing SURVEY?	Local District; NR District

**GENERAL INFORMATION**

CATEGORY	building	CURRENT FUNCTION	Domestic - single dwelling
CONDITION	good	HISTORIC FUNCTION	Domestic - single dwelling
INTEGRITY	minor alterations	REASON for SIGNIFICANCE	Sole example of Art Modern style in the district, with very few alterations.
SECONDARY STRUCTURE			

ARCHITECTURAL DESCRIPTION

ARCHITECTURAL CLASSIFICATION	Art Moderne	PLAN	irregular
DETAILS		NO OF STORIES	2
BEGINYEAR	c. 1940	ROOF TYPE	Hipped
OTHER YEAR		ROOF MATERIAL	Asphalt - shingle
DATESOURCE	Surveyor	FOUNDATION	Not visible
WALL MATERIAL (current)	Brick	PORCH	Front
WALL MATERIAL 2 (current)	Stucco	WINDOW MATERIAL	Wood
WALL MATERIAL (original)	Brick	WINDOW MATERIAL	
WALL MATERIAL 2 (original)	Stucco	WINDOW TYPE	double hung/casement
		WINDOW CONFIG	2/2 horizontal; 4-light
SIGNIFICANT FEATURES	Brick first story with horizontal stringcourses and 4-light corner casement windows; centered screened front porch with brick around porch entry; 2/2 horizontal wood windows in 2nd story		
ALTERATIONS	rear addition		

HISTORIC INFORMATION

HISTORIC NAME

COMMON NAME

COST

ARCHITECT

ARCHITECT2

BUILDER

ARCHITECT SOURCE

HISTORIC INFO

PERMITS

LANDSCAPE Midblock on west side of residential street; front sidewalk; side driveway; similar setbacks; mature trees

COA DATE

COA DECISION

PREPARER

PREPARER ORGANIZATION

SURVEYDATE

SURVEYAREA



DIGITAL PHOTO ID

DIGITAL PHOTO ID2

DIGITAL PHOTO ID3

DIGITAL PHOTO ID4

City of NAPERVILLE

ILLINOIS URBAN ARCHITECTURAL AND HISTORICAL SURVEY CONTINUATION SHEET

STREET # 120-122

STREET S. BRAINARD STREET

ADDITIONAL PHOTOS OR INFORMATION

Significant Features

Hipped roof with larger paired brackets interspersed with smaller single brackets; front façade w/ elaborate incised wood door and windows surrounds w/ center keystones; simpler classical lintels on side windows; historic 2/2 vertical wood windows with flattened arches on upper sash; 1st story front window bay with scrolled brackets and piers; historic double wood front door

STREET #	120-122
DIRECTION	S
STREET	BRAINARD
SUFFIX	ST
PIN	0818320003
LOCAL SIGNIFICANCE RATING	S
POTENTIAL IND NR? (Y or N)	N
Contributing to a NR DISTRICT?	C
Contributing secondary structure?	NC
Listed on existing SURVEY?	Local District; NR District

**GENERAL INFORMATION**

CATEGORY	building	CURRENT FUNCTION	Domestic - multiple dwelling
CONDITION	excellent	HISTORIC FUNCTION	Domestic - single dwelling
INTEGRITY	minor alterations and addition(s)	REASON for SIGNIFICANCE	The elaborate incised window and door hoods are the distinguishing feature of this 1870s Italianate.
SECONDARY STRUCTURE	Barn/d. garage		

ARCHITECTURAL DESCRIPTION

ARCHITECTURAL CLASSIFICATION	Italianate	PLAN	irregular
DETAILS		NO OF STORIES	2
BEGINYEAR	1874	ROOF TYPE	Hipped
OTHER YEAR	1881	ROOF MATERIAL	Asphalt - shingle
DATESOURCE	NR Nomination/Plaque	FOUNDATION	Stone/concrete block
WALL MATERIAL (current)	Wood	PORCH	-
WALL MATERIAL 2 (current)		WINDOW MATERIAL	Wood
WALL MATERIAL (original)	Wood	WINDOW MATERIAL	
WALL MATERIAL 2 (original)		WINDOW TYPE	double hung/casement
		WINDOW CONFIG	2/2 vert.; 6/6; 1-light
SIGNIFICANT FEATURES	Hipped roof with larger paired brackets interspersed with smaller single brackets; front façade w/ elaborate incised wood door and windows surrounds w/ center keystones; simpler classical lintels on side windows--SEE CONTINUATION SHEET		
ALTERATIONS	Replacement front entry steps (not historic); 1 story south (rear) porch extended and enclosed (not historic); replacement wood siding (historically appropriate); fixed shutters (not historic); 2 story rear/north addition; rear deck addition Roof replacement (admin. approval COA#12-2035)		

HISTORIC INFORMATION

HISTORIC NAME	
COMMON NAME	
COST	
ARCHITECT	
ARCHITECT2	
BUILDER	
ARCHITECT SOURCE	

HISTORIC INFO According to NR nomination, this house was occupied for many years by the Hammerschmidt family, prominent in the local quarrying business. Plaque says the family bought it in 1902.

PERMITS Sanborn maps indicate that the rear/north addition and enclosure/extension of S. porch occurred after 1943.

LANDSCAPE Midblock on east side of residential street; front sidewalk; similar setbacks; mature trees

COA DATE

COA DECISION

PREPARER Lara Ramsey

PREPARER ORGANIZATION GRANACKI HISTORIC CONSULTANTS

SURVEYDATE 11/27/2007

SURVEYAREA NAPERVILLE

120-122 S BRAINARD



DIGITAL PHOTO ID \\images\brainard120-122s.jpg

DIGITAL PHOTO ID2 \\images\brainard120-122s(2).jpg

DIGITAL PHOTO ID3 \\images\brainard120-122s(3).jpg

DIGITAL PHOTO ID4 \\images\brainard120-122s(4).jpg

City of NAPERVILLE
ILLINOIS URBAN ARCHITECTURAL AND HISTORICAL SURVEY
CONTINUATION SHEET

STREET # 125

STREET N. BRAINARD STREET

ADDITIONAL PHOTOS OR INFORMATION

Alterations

Replacement windows in original openings (not historic); fixed shutters (not historic); replacement siding and shingles (historic); front porch railings & posts replaced, and porch possibly extended; rear/s. porch enclosed (not historic); replacement door in ell; extra door on S. side of gable bay

STREET #	125
DIRECTION	N
STREET	BRAINARD
SUFFIX	ST
PIN	0818302008
LOCAL SIGNIFICANCE RATING	C
POTENTIAL IND NR? (Y or N)	N
Contributing to a NR DISTRICT?	C
Contributing secondary structure?	C
Listed on existing SURVEY?	Local District; NR District

**GENERAL INFORMATION**

CATEGORY	building	CURRENT FUNCTION	Domestic - single dwelling
CONDITION	good	HISTORIC FUNCTION	Domestic - single dwelling
INTEGRITY	minor alterations	REASON for SIGNIFICANCE	
SECONDARY STRUCTURE	Detached garage Shed (C)		

ARCHITECTURAL DESCRIPTION

ARCHITECTURAL CLASSIFICATION	Gabled Ell	PLAN	L
DETAILS		NO OF STORIES	2
BEGINYEAR	c. 1885	ROOF TYPE	Front gable
OTHER YEAR		ROOF MATERIAL	Asphalt - shingle
DATESOURCE	Surveyor	FOUNDATION	Stone
WALL MATERIAL (current)	Wood	PORCH	Front entry
WALL MATERIAL 2 (current)	Wood - shingle	WINDOW MATERIAL	Aluminum
WALL MATERIAL (original)	Wood	WINDOW MATERIAL	
WALL MATERIAL 2 (original)	Wood - shingle	WINDOW TYPE	double hung
		WINDOW CONFIG	2/2 vertical; 6/1
SIGNIFICANT FEATURES	Front gable bay with side gable ell		
ALTERATIONS	Replacement windows in original openings (not historic); fixed shutters (not historic); replacement siding and shingles (historic); front porch railings & posts replaced--SEE CONTINUATION SHEET		

HISTORIC INFORMATION

**HISTORIC
NAME**

**COMMON
NAME**

COST

ARCHITECT

ARCHITECT2

BUILDER

**ARCHITECT
SOURCE**

**HISTORIC
INFO**

PERMITS

LANDSCAPE

Midblock on west side of residential street; front sidewalk; rear alley; similar setbacks; mature trees

COA DATE

**COA
DECISION**

PREPARER

**PREPARER
ORGANIZATION**

SURVEYDATE

SURVEYAREA



**DIGITAL
PHOTO ID**

\\images\\brainard
125n.jpg

**DIGITAL
PHOTO ID3**

\\images\\brainard125
n(3).jpg

**DIGITAL
PHOTO ID2**

\\images\\brainard
125n(2).jpg

**DIGITAL
PHOTO ID4**

\\images\\brainard125
n(4).jpg

STREET #	125
DIRECTION	S
STREET	BRAINARD
SUFFIX	ST
PIN	0818319010
LOCAL SIGNIFICANCE RATING	C
POTENTIAL IND NR? (Y or N)	N
Contributing to a NR DISTRICT?	C
Contributing secondary structure?	C
Listed on existing SURVEY?	Local District; NR District

**GENERAL INFORMATION**

CATEGORY	building	CURRENT FUNCTION	Domestic - single dwelling
CONDITION	good	HISTORIC FUNCTION	Domestic - single dwelling
INTEGRITY	minor alterations and addition(s)	REASON for SIGNIFICANCE	
SECONDARY STRUCTURE	Detached garage		

ARCHITECTURAL DESCRIPTION

ARCHITECTURAL CLASSIFICATION	Queen Anne	PLAN	irregular
DETAILS		NO OF STORIES	2
BEGINYEAR	c. 1890	ROOF TYPE	Combination
OTHER YEAR		ROOF MATERIAL	Asphalt - shingle
DATESOURCE	Surveyor	FOUNDATION	Stone
WALL MATERIAL (current)	Wood	PORCH	Front entry/side
WALL MATERIAL 2 (current)	Wood - shingle	WINDOW MATERIAL	Wood
WALL MATERIAL (original)	Wood	WINDOW MATERIAL	
WALL MATERIAL 2 (original)	Wood - shingle	WINDOW TYPE	double hung/fixed
		WINDOW CONFIG	1/1; multi-light
SIGNIFICANT FEATURES	Irregular massing with front gabled bay, 2-story square hipped-roof bay on south elevation, and 2-story hipped roof bay with overhanging 2nd story and 1st story triangular window bay on north elevation; decorative shingling on front gable bay		
ALTERATIONS	historic S. side porch addition enclosed and 2nd story added; replacement wood windows in original openings (historic); rear 2 story deck addition		

HISTORIC INFORMATION

HISTORIC NAME	
COMMON NAME	
COST	
ARCHITECT	
ARCHITECT2	
BUILDER	
ARCHITECT SOURCE	

HISTORIC INFO	
---------------	--

PERMITS	1898 Sanborn map (Sheet 3) shows 1.5 story NE corner porch and a second S. porch.
---------	---

LANDSCAPE	Midblock on west side of residential street; front sidewalk; rear alley; similar setbacks; mature trees
-----------	---

COA DATE	
----------	--

COA DECISION	
--------------	--

PREPARER	Lara Ramsey
----------	-------------

PREPARER ORGANIZATION	GRANACKI HISTORIC CONSULTANTS
-----------------------	-------------------------------

SURVEYDATE	11/27/2007
------------	------------

SURVEYAREA	NAPERVILLE
------------	------------

125 S BRAINARD



DIGITAL PHOTO ID

\\images\\brainard125s.jpg

DIGITAL PHOTO ID3

\\images\\brainard125s(3).jpg

DIGITAL PHOTO ID2

\\images\\brainard125s(2).jpg

DIGITAL PHOTO ID4

\\images\\brainard125s(4).jpg

City of NAPERVILLE

ILLINOIS URBAN ARCHITECTURAL AND HISTORICAL SURVEY CONTINUATION SHEET

STREET # 135

STREET N. BRAINARD STREET

ADDITIONAL PHOTOS OR INFORMATION

Significant Features

Hipped roof with paneled frieze; historic 2/2 flattened arch wood windows on front and south elevations with elaborate incised wood surrounds & center keystones; double entry doors with flattened arch transom and incised wood surround; oval north window; two story north bay with 1/1 wood windows; two story south side square bay; three-sided south window bay with historic 1/1 windows

Historic Information

[from A GUIDE TO CHICAGO'S HISTORIC SUBURBS, p. 402]

“...this is a good example of a cubic, Italianate building from the 1870s. Especially notable are the window surrounds which have feet and shoulders and nice incising in the upper parts and the keystone.”

STREET #	135
DIRECTION	N
STREET	BRAINARD
SUFFIX	ST
PIN	0818302007
LOCAL SIGNIFICANCE RATING	S
POTENTIAL IND NR? (Y or N)	N
Contributing to a NR DISTRICT?	C
Contributing secondary structure?	NC
Listed on existing SURVEY?	Local District; NR District

**GENERAL INFORMATION**

CATEGORY	building	CURRENT FUNCTION	Domestic - single dwelling
CONDITION	excellent	HISTORIC FUNCTION	Domestic - single dwelling
INTEGRITY	minor alterations	REASON for SIGNIFICANCE	Despite alterations, this Italianate house remains an outstanding example within the local historic district.
SECONDARY STRUCTURE	Guest house D. garage/shed		

ARCHITECTURAL DESCRIPTION

ARCHITECTURAL CLASSIFICATION	Italianate	PLAN	Rectangular
DETAILS		NO OF STORIES	2
BEGINYEAR	c. 1873	ROOF TYPE	Hipped
OTHER YEAR		ROOF MATERIAL	Asphalt - shingle
DATESOURCE	NHS Brochure (East)	FOUNDATION	Stone
WALL MATERIAL (current)	Wood	PORCH	-
WALL MATERIAL 2 (current)		WINDOW MATERIAL	Wood
WALL MATERIAL (original)	Wood	WINDOW MATERIAL	
WALL MATERIAL 2 (original)		WINDOW TYPE	double hung/fixed
		WINDOW CONFIG	round; 2/2 v.; 2/2 horiz.
SIGNIFICANT FEATURES	Hipped roof with paneled frieze; historic 2/2 flattened arch wood windows on front façade with elaborate incised wood surrounds & center keystones; double entry doors with flattened arch transom---SEE CONTINUATION SHEET		
ALTERATIONS	1/1 replacement window on north elevation; south/rear 1 story addition; north/rear window bay addition; south side entry addition (historic) with non-historic wrought iron railings and concrete steps on entry porch; replacement front steps		

HISTORIC INFORMATION

HISTORIC NAME

COMMON NAME

COST

ARCHITECT

ARCHITECT2

BUILDER

ARCHITECT SOURCE

HISTORIC INFO

PERMITS

LANDSCAPE Midblock on west side of residential street; front sidewalk; rear alley; side driveway; large lot; mature trees

COA DATE

COA DECISION

PREPARER

PREPARER ORGANIZATION

SURVEYDATE

SURVEYAREA

135 N BRAINARD



DIGITAL PHOTO ID

\\images\\brainard135n.jpg

DIGITAL PHOTO ID3

\\images\\brainard135n(3).jpg

DIGITAL PHOTO ID2

\\images\\brainard135n(2).jpg

DIGITAL PHOTO ID4

\\images\\brainard135n(4).jpg

STREET #	141
DIRECTION	N
STREET	BRAINARD
SUFFIX	ST
PIN	0818302006
LOCAL SIGNIFICANCE RATING	C
POTENTIAL IND NR? (Y or N)	N
Contributing to a NR DISTRICT?	C
Contributing secondary structure?	NC
Listed on existing SURVEY?	Local District; NR District

**GENERAL INFORMATION**

CATEGORY	building	CURRENT FUNCTION	Domestic - single dwelling
CONDITION	good	HISTORIC FUNCTION	Domestic - single dwelling
INTEGRITY	Minor alterations	REASON for SIGNIFICANCE	
SECONDARY STRUCTURE	Detached garage		

ARCHITECTURAL DESCRIPTION

ARCHITECTURAL CLASSIFICATION	Craftsman	PLAN	rectangular
DETAILS		NO OF STORIES	2.5
BEGINYEAR	1919	ROOF TYPE	Front gable
OTHER YEAR		ROOF MATERIAL	Asphalt - shingle
DATESOURCE	Owner	FOUNDATION	Parged
WALL MATERIAL (current)	Stucco	PORCH	Full front-enclosed
WALL MATERIAL 2 (current)		WINDOW MATERIAL	Wood
WALL MATERIAL (original)	Stucco	WINDOW MATERIAL	
WALL MATERIAL 2 (original)		WINDOW TYPE	Double hung/casement/sto
		WINDOW CONFIG	3/1; 2-light; 5-light
SIGNIFICANT FEATURES	Front gable roof with exposed rafter tails; hipped front bay with sun porch and entry porch with square wood columns on stucco knee wall; historic 1/1 wood double hung windows and casement window beside door		
ALTERATIONS	Rear enclosed porch addition (c. 1970); railing removed from roof of porch structure, and porch roof slanted (1980s)		

HISTORIC INFORMATION

HISTORIC NAME	
COMMON NAME	
COST	
ARCHITECT	
ARCHITECT2	
BUILDER	
ARCHITECT SOURCE	

HISTORIC INFO	
---------------	--

PERMITS	
---------	--

LANDSCAPE	Midblock on west side of residential street; front sidewalk; rear alley; similar setbacks; mature trees
-----------	---

COA DATE	
----------	--

COA DECISION	
--------------	--

PREPARER	Lara Ramsey
----------	-------------

PREPARER ORGANIZATION	GRANACKI HISTORIC CONSULTANTS
-----------------------	-------------------------------

SURVEYDATE	11/27/2007
------------	------------

SURVEYAREA	NAPERVILLE
------------	------------

141 N BRAINARD



DIGITAL PHOTO ID
\\Images\\brainard141n.jpg

DIGITAL PHOTO ID2
\\Images\\brainard141n(2).jpg

DIGITAL PHOTO ID3

DIGITAL PHOTO ID4

\\Images\\brainard141n(3).jpg

\\Images\\brainard141n(4).jpg

City of NAPERVILLE

ILLINOIS URBAN ARCHITECTURAL AND HISTORICAL SURVEY CONTINUATION SHEET

STREET # 145

STREET N. BRAINARD STREET

ADDITIONAL PHOTOS OR INFORMATION

Front gambrel roof with cornice returns; shingle siding; rounded vergeboard & pent enclosure under gable (south side bay has identical gable); cutaway corners on front bay; inset front entry porch with classical corner column; 3-sided south 1st story window bay; hipped north dormer windows; historic 1/1, leaded glass/1; and multi-light wood windows

STREET # 145
 DIRECTION N
 STREET BRAINARD
 SUFFIX ST
 PIN 0818133004

LOCAL SIGNIFICANCE RATING S

POTENTIAL IND NR? (Y or N) N

Contributing to a NR DISTRICT? C

Contributing secondary structure? C

Listed on existing SURVEY? Local District; NR District



GENERAL INFORMATION

CATEGORY	building	CURRENT FUNCTION	Domestic - single dwelling
CONDITION	good	HISTORIC FUNCTION	Domestic - single dwelling
INTEGRITY	minor alterations and addition(s)	REASON for SIGNIFICANCE	The unusual gambrel roof with rounded arch detail distinguishes this early 1900s Shingle Style residence.
SECONDARY STRUCTURE	Detached garage		

ARCHITECTURAL DESCRIPTION

ARCHITECTURAL CLASSIFICATION	Shingle Style	PLAN	Rectangular
DETAILS		NO OF STORIES	2
BEGINYEAR	1904	ROOF TYPE	Gambrel
OTHER YEAR		ROOF MATERIAL	Asphalt - shingle
DATESOURCE	Surveyor	FOUNDATION	Parged (stone)
WALL MATERIAL (current)	Aluminum	PORCH	Front entry
WALL MATERIAL 2 (current)	Wood - shingle	WINDOW MATERIAL	Wood
WALL MATERIAL (original)	Wood	WINDOW MATERIAL	Leaded Glass
WALL MATERIAL 2 (original)	Wood - shingle	WINDOW TYPE	Double/single hung;fixed
		WINDOW CONFIG	1/1; leaded/1; multi-light

SIGNIFICANT FEATURES Front gambrel roof with cornice returns; shingle siding; rounded verge board & pent enclosure under gable (south side bay has identical gable); cutaway corners on front bay---SEE CONTINUATION SHEET

ALTERATIONS Aluminum siding; wrought iron railing and replacement steps to porch; 1 story rear addition (1981)

HISTORIC INFORMATION

HISTORIC NAME

COMMON NAME

COST

ARCHITECT

ARCHITECT2

BUILDER

ARCHITECT SOURCE

HISTORIC INFO

PERMITS

LANDSCAPE Midblock on west side of residential street; rear driveway; front sidewalk; similar setbacks; mature trees

COA DATE

COA DECISION

PREPARER

PREPARER ORGANIZATION

SURVEYDATE

SURVEYAREA

145 N BRAINARD



DIGITAL PHOTO ID

DIGITAL PHOTO ID3

DIGITAL PHOTO ID2

DIGITAL PHOTO ID4

STREET #	153
DIRECTION	N
STREET	BRAINARD
SUFFIX	ST
PIN	0818133003
LOCAL SIGNIFICANCE RATING	C
POTENTIAL IND NR? (Y or N)	N
Contributing to a NR DISTRICT?	C
Contributing secondary structure?	NC
Listed on existing SURVEY?	Local District; NR District

**GENERAL INFORMATION**

CATEGORY	building	CURRENT FUNCTION	Domestic - single dwelling
CONDITION	good	HISTORIC FUNCTION	Domestic - single dwelling
INTEGRITY	minor alterations	REASON for SIGNIFICANCE	
SECONDARY STRUCTURE	Detached garage Shed (C)		

ARCHITECTURAL DESCRIPTION

ARCHITECTURAL CLASSIFICATION	Gable Front	PLAN	irregular
DETAILS		NO OF STORIES	2
BEGINYEAR	1872	ROOF TYPE	Front gable
OTHER YEAR		ROOF MATERIAL	Asphalt - shingle
DATESOURCE	Plaque	FOUNDATION	Stone
WALL MATERIAL (current)	Aluminum	PORCH	Full front
WALL MATERIAL 2 (current)		WINDOW MATERIAL	Wood
WALL MATERIAL (original)	Wood	WINDOW MATERIAL	
WALL MATERIAL 2 (original)		WINDOW TYPE	Double hung/awning
		WINDOW CONFIG	6/6; 1/1; 3-light
SIGNIFICANT FEATURES	Front gable roof; historic fenestration on front façade; transom over front entry; 1/1 wood windows appear historic, but not original; lower gabled rear/north bay		
ALTERATIONS	6/6 replacement windows downsized in openings (historic); replacement front door; full front porch addition (c. 1905-- railings & supports later); 1 story south/rear addition (historic); aluminum siding; fixed shutters; 1 story rear addition (historic)		

HISTORIC INFORMATION

HISTORIC NAME	Leffler, Jeremiah House
COMMON NAME	
COST	
ARCHITECT	
ARCHITECT2	
BUILDER	
ARCHITECT SOURCE	

HISTORIC INFO	
----------------------	--

PERMITS	
----------------	--

LANDSCAPE	Southwest corner of School and Brainard; front and north sidewalks; rear alley; similar setbacks; mature trees
------------------	--

COA DATE	
-----------------	--

COA DECISION	
---------------------	--

PREPARER	Lara Ramsey
-----------------	-------------

PREPARER ORGANIZATION	GRANACKI HISTORIC CONSULTANTS
------------------------------	-------------------------------

SURVEYDATE	11/28/2007
-------------------	------------

SURVEYAREA	NAPERVILLE
-------------------	------------

153 N BRAINARD



DIGITAL PHOTO ID

\\images\\brainard153n.jpg

DIGITAL PHOTO ID3

\\images\\brainard153n(3).jpg

DIGITAL PHOTO ID2

\\images\\brainard153n(2).jpg

DIGITAL PHOTO ID4

\\images\\brainard153n(4).jpg

STREET # 209

DIRECTION N

STREET BRAINARD

SUFFIX ST

PIN 0818132011

LOCAL

SIGNIFICANCE
RATING S

POTENTIAL IND
NR? (Y or N) N

Contributing to a
NR DISTRICT? C

Contributing secondary structure? NC

Listed on existing
SURVEY? IHSS (O); Local District; NR

**GENERAL INFORMATION**

CATEGORY	building	CURRENT FUNCTION	Domestic - single dwelling
CONDITION	excellent	HISTORIC FUNCTION	Domestic - single dwelling
INTEGRITY	minor alterations and addition(s)	REASON for SIGNIFICANCE	Excellent example of Colonial Revival residence in the historic district. Simple, yet stately, example. Listed on Illinois Historic Structures Survey.
SECONDARY STRUCTURE	Detached garage		

ARCHITECTURAL DESCRIPTION

ARCHITECTURAL CLASSIFICATION	Colonial Revival	PLAN	Rectangular
DETAILS		NO OF STORIES	2
BEGINYEAR	c. 1925	ROOF TYPE	Side gable
OTHER YEAR		ROOF MATERIAL	Asphalt - shingle
DATESOURCE	Surveyor	FOUNDATION	Concrete - poured
WALL MATERIAL (current)	Brick	PORCH	-
WALL MATERIAL 2 (current)		WINDOW MATERIAL	Wood
WALL MATERIAL (original)	Brick	WINDOW MATERIAL	
WALL MATERIAL 2 (original)		WINDOW TYPE	Double hung/awning
		WINDOW CONFIG	6/1; 3-light

SIGNIFICANT
FEATURES Side gable roof with cornice returns; symmetrical front façade; front entry with classical surround and carved brackets; historic 6/1 wood double hung windows

ALTERATIONS Replacement front steps and railing (not historic); 1 story rear addition

STREET #	209
DIRECTION	N
STREET	BRAINARD
SUFFIX	ST
PIN	0818132011
LOCAL SIGNIFICANCE RATING	S
POTENTIAL IND NR? (Y or N)	N
Contributing to a NR DISTRICT?	C
Contributing secondary structure?	NC
Listed on existing SURVEY?	IHSS (O); Local District; NR

**GENERAL INFORMATION**

CATEGORY	building	CURRENT FUNCTION	Domestic - single dwelling
CONDITION	excellent	HISTORIC FUNCTION	Domestic - single dwelling
INTEGRITY	minor alterations and addition(s)	REASON for SIGNIFICANCE	Excellent example of Colonial Revival residence in the historic district. Simple, yet stately, example. Listed on Illinois Historic Structures Survey.
SECONDARY STRUCTURE	Detached garage		

ARCHITECTURAL DESCRIPTION

ARCHITECTURAL CLASSIFICATION	Colonial Revival	PLAN	Rectangular
DETAILS		NO OF STORIES	2
BEGINYEAR	c. 1925	ROOF TYPE	Side gable
OTHER YEAR		ROOF MATERIAL	Asphalt - shingle
DATESOURCE	Surveyor	FOUNDATION	Concrete - poured
WALL MATERIAL (current)	Brick	PORCH	-
WALL MATERIAL 2 (current)		WINDOW MATERIAL	Wood
WALL MATERIAL (original)	Brick	WINDOW MATERIAL	
WALL MATERIAL 2 (original)		WINDOW TYPE	Double hung/awning
		WINDOW CONFIG	6/1; 3-light
SIGNIFICANT FEATURES	Side gable roof with cornice returns; symmetrical front façade; front entry with classical surround and carved brackets; historic 6/1 wood double hung windows		
ALTERATIONS	Replacement front steps and railing (not historic); 1 story rear addition Window replacement (admin. approved. COA#10-2893) Window replacement (admin. approved COA# 11-3735)		

HISTORIC INFORMATION

HISTORIC NAME	
COMMON NAME	
COST	
ARCHITECT	
ARCHITECT2	
BUILDER	
ARCHITECT SOURCE	

HISTORIC INFO	
---------------	--

PERMITS	
---------	--

LANDSCAPE	Northwest corner of Brainard and School; front and south sidewalks; oversized lot; wrought iron fence; rear alley; mature trees
-----------	---

COA DATE	
----------	--

COA DECISION	
--------------	--

PREPARER	Lara Ramsey
----------	-------------

PREPARER ORGANIZATION	GRANACKI HISTORIC CONSULTANTS
-----------------------	-------------------------------

SURVEYDATE	11/28/2007
------------	------------

SURVEYAREA	NAPERVILLE
------------	------------

209 N BRAINARD



DIGITAL PHOTO ID

\\Images\\brainard209n.jpg

DIGITAL PHOTO ID3

\\Images\\brainard209n(3).jpg

DIGITAL PHOTO ID2

\\Images\\brainard209n(2).jpg

DIGITAL PHOTO ID4

\\Images\\brainard209n(4).jpg

STREET #	213
DIRECTION	N
STREET	BRAINARD
SUFFIX	ST
PIN	0818132010
LOCAL SIGNIFICANCE RATING	PS
POTENTIAL IND NR? (Y or N)	N
Contributing to a NR DISTRICT?	C
Contributing secondary structure?	C
Listed on existing SURVEY?	IHSS (HD); Local District; NR

**GENERAL INFORMATION**

CATEGORY	building	CURRENT FUNCTION	Domestic - multiple dwelling
CONDITION	good	HISTORIC FUNCTION	Domestic - single dwelling
INTEGRITY	minor alterations and addition(s)	REASON for SIGNIFICANCE	Although altered, this 1870s Greek Revival residence retains its historic character, and is one of only a handful of this style in the district. List on IHSS (HD).
SECONDARY STRUCTURE	Detached garage		

ARCHITECTURAL DESCRIPTION

ARCHITECTURAL CLASSIFICATION	Greek Revival	PLAN	irregular
DETAILS		NO OF STORIES	2
BEGINYEAR	c. 1870	ROOF TYPE	Front gable
OTHER YEAR		ROOF MATERIAL	Asphalt - shingle
DATESOURCE	Surveyor	FOUNDATION	Stone
WALL MATERIAL (current)	Aluminum	PORCH	Front entry
WALL MATERIAL 2 (current)		WINDOW MATERIAL	Wood
WALL MATERIAL (original)	Wood	WINDOW MATERIAL	
WALL MATERIAL 2 (original)		WINDOW TYPE	double hung/fixed
		WINDOW CONFIG	6/6; multi-light; 1/1
SIGNIFICANT FEATURES	Front gable bay with 2 story south side gabled bay; historic 6/6 wood windows (probably not original); recessed front entry with transom and double wood paneled doors; rounded south window		
ALTERATIONS	Aluminum siding (not historic); fixed shutters (not historic); 2 story rear/north side shed addition (not historic); S. entry add.(historic--porch is later); 1/1 & multi-light replacement windows in original openings (historic); rear add. w/ deck Replacement of siding & window trim (admin. approved COA#15-4313)		

HISTORIC INFORMATION

**HISTORIC
NAME**

**COMMON
NAME**

COST

ARCHITECT

ARCHITECT2

BUILDER

**ARCHITECT
SOURCE**

**HISTORIC
INFO**

PERMITS

LANDSCAPE

Midblock on west side of residential
street; front sidewalk; large lot;
mature trees; rear alley

COA DATE

**COA
DECISION**

PREPARER

**PREPARER
ORGANIZATION**

SURVEYDATE

SURVEYAREA

213 N BRAINARD



**DIGITAL
PHOTO ID**

\\Images\\brainard
213n.jpg

**DIGITAL
PHOTO ID3**

\\Images\\brainard213
n(3).jpg

**DIGITAL
PHOTO ID2**

\\Images\\brainard
213n(2).jpg

**DIGITAL
PHOTO ID4**

\\Images\\brainard213
n(4).jpg

STREET #	219
DIRECTION	N
STREET	BRAINARD
SUFFIX	ST
PIN	0818132009
LOCAL SIGNIFICANCE RATING	PS
POTENTIAL IND NR? (Y or N)	N
Contributing to a NR DISTRICT?	C
Contributing secondary structure?	C
Listed on existing SURVEY?	Local District; NR District

**GENERAL INFORMATION**

CATEGORY	building	CURRENT FUNCTION	Domestic - multiple dwelling
CONDITION	good	HISTORIC FUNCTION	Domestic - single dwelling
INTEGRITY	minor alterations	REASON for SIGNIFICANCE	Fine, brick-clad example of American Foursquare type.
SECONDARY STRUCTURE	Detached garage		

ARCHITECTURAL DESCRIPTION

ARCHITECTURAL CLASSIFICATION	American Foursquare	PLAN	rectangular
DETAILS	Prairie	NO OF STORIES	2.5
BEGINYEAR	c. 1915	ROOF TYPE	Hipped
OTHER YEAR		ROOF MATERIAL	Asphalt - shingle
DATESOURCE	Surveyor	FOUNDATION	Concrete - poured
WALL MATERIAL (current)	Brick	PORCH	Full front
WALL MATERIAL 2 (current)		WINDOW MATERIAL	Wood
WALL MATERIAL (original)	Brick	WINDOW MATERIAL	
WALL MATERIAL 2 (original)		WINDOW TYPE	Double/single hung/awnin
		WINDOW CONFIG	3/1; 1/1; 6/1; multi-light
SIGNIFICANT FEATURES	Hipped roof with overhanging eaves and front central hipped dormer; full front hipped roof porch with square brick columns on brick knee walls; historic double hung and single hung wood windows; 2 story south bay with gable roof		
ALTERATIONS	Second story addition to rear porch (historic); door added to first story south bay (appears historic)		

HISTORIC INFORMATION

HISTORIC NAME	
COMMON NAME	
COST	
ARCHITECT	
ARCHITECT2	
BUILDER	
ARCHITECT SOURCE	

HISTORIC INFO	
---------------	--

PERMITS	
---------	--

LANDSCAPE	Midblock on west side of residential street; front sidewalk; rear alley; similar setbacks; mature trees
-----------	---

COA DATE	
----------	--

COA DECISION	
--------------	--

PREPARER	Lara Ramsey
----------	-------------

PREPARER ORGANIZATION	GRANACKI HISTORIC CONSULTANTS
-----------------------	-------------------------------

SURVEYDATE	11/28/2007
------------	------------

SURVEYAREA	NAPERVILLE
------------	------------

219 N BRAINARD



DIGITAL PHOTO ID
\\Images\\brainard219n.jpg

DIGITAL PHOTO ID2
\\Images\\brainard219n(2).jpg

DIGITAL PHOTO ID3
\\Images\\brainard219n(3).jpg

DIGITAL PHOTO ID4
\\Images\\brainard219n(4).jpg

STREET #	227
DIRECTION	N
STREET	BRAINARD
SUFFIX	ST
PIN	0818132008
LOCAL SIGNIFICANCE RATING	C
POTENTIAL IND NR? (Y or N)	N
Contributing to a NR DISTRICT?	C
Contributing secondary structure?	-
Listed on existing SURVEY?	Local District; NR District

**GENERAL INFORMATION**

CATEGORY	building	CURRENT FUNCTION	Domestic - multiple dwelling
CONDITION	excellent	HISTORIC FUNCTION	Domestic - single dwelling
INTEGRITY	minor alterations	REASON for SIGNIFICANCE	
SECONDARY STRUCTURE			

ARCHITECTURAL DESCRIPTION

ARCHITECTURAL CLASSIFICATION	Duplex	PLAN	Rectangular
DETAILS		NO OF STORIES	2
BEGINYEAR	c. 1955	ROOF TYPE	Hipped
OTHER YEAR		ROOF MATERIAL	Asphalt - shingle
DATESOURCE	Surveyor	FOUNDATION	Concrete - poured
WALL MATERIAL (current)	Brick	PORCH	Side entry
WALL MATERIAL 2 (current)		WINDOW MATERIAL	Vinyl/wood
WALL MATERIAL (original)	Brick	WINDOW MATERIAL	Glass block
WALL MATERIAL 2 (original)		WINDOW TYPE	double hung/fixed
		WINDOW CONFIG	1/1
SIGNIFICANT FEATURES	Hipped roof; north and south entries with cantilevered canopies; historic 6/1 wood windows		
ALTERATIONS	1/1 vinyl replacement windows in original openings; fixed shutters; glass block replacement windows in original openings		

HISTORIC INFORMATION

HISTORIC NAME	
COMMON NAME	
COST	
ARCHITECT	
ARCHITECT2	
BUILDER	
ARCHITECT SOURCE	

HISTORIC INFO	
----------------------	--

PERMITS	
----------------	--

LANDSCAPE	Midblock on west side of residential street; front sidewalk; rear alley; similar setbacks; mature trees
------------------	---

COA DATE	
-----------------	--

COA DECISION	
---------------------	--

PREPARER	Lara Ramsey
-----------------	-------------

PREPARER ORGANIZATION	GRANACKI HISTORIC CONSULTANTS
------------------------------	-------------------------------

SURVEYDATE	11/28/2007
-------------------	------------

SURVEYAREA	NAPERVILLE
-------------------	------------

227 N BRAINARD



DIGITAL PHOTO ID \\images\brainard 227n.jpg

DIGITAL PHOTO ID2 \\images\brainard 227n(2).jpg

DIGITAL PHOTO ID3

DIGITAL PHOTOID4

\\images\brainard227 n(3).jpg

\\images\brainard227 n(4).jpg

STREET #	229
DIRECTION	N
STREET	BRAINARD
SUFFIX	ST
PIN	0818132007
LOCAL SIGNIFICANCE RATING	C
POTENTIAL IND NR? (Y or N)	N
Contributing to a NR DISTRICT?	C
Contributing secondary structure?	C
Listed on existing SURVEY?	Local District; NR District

**GENERAL INFORMATION**

CATEGORY	building	CURRENT FUNCTION	Domestic - multiple dwelling
CONDITION	excellent	HISTORIC FUNCTION	Domestic - single dwelling
INTEGRITY	minor alterations	REASON for SIGNIFICANCE	
SECONDARY STRUCTURE	Detached garage		

ARCHITECTURAL DESCRIPTION

ARCHITECTURAL CLASSIFICATION	Colonial Revival	PLAN	rectangular
DETAILS		NO OF STORIES	2
BEGINYEAR	c. 1950	ROOF TYPE	Hipped
OTHER YEAR		ROOF MATERIAL	Asphalt - shingle
DATESOURCE	Surveyor	FOUNDATION	Concrete - poured
WALL MATERIAL (current)	Brick	PORCH	-
WALL MATERIAL 2 (current)		WINDOW MATERIAL	Wood
WALL MATERIAL (original)	Brick	WINDOW MATERIAL	
WALL MATERIAL 2 (original)		WINDOW TYPE	double hung
		WINDOW CONFIG	6/1
SIGNIFICANT FEATURES	Hipped roof; classical entry surround; historic 6/1 double hung wood windows		
ALTERATIONS	Aluminum awning over north side entry (not historic)		

HISTORIC INFORMATION

**HISTORIC
NAME**

**COMMON
NAME**

COST

ARCHITECT

ARCHITECT2

BUILDER

**ARCHITECT
SOURCE**

**HISTORIC
INFO**

PERMITS

LANDSCAPE

Southwest corner of North and
Brainard; front and north sidewalks;
rear alley; similar setbacks; mature
trees

COA DATE

**COA
DECISION**

PREPARER

**PREPARER
ORGANIZATION**

SURVEYDATE

SURVEYAREA

229

N

BRAINARD



**DIGITAL
PHOTO ID**

\\images\\brainard
229n.jpg

**DIGITAL
PHOTO ID3**

\\images\\brainard229
n(3).jpg

**DIGITAL
PHOTO ID2**

\\images\\brainard
229n(2).jpg

**DIGITAL
PHOTO ID4**

\\images\\brainard229
n(4).jpg