

STREET #

DIRECTION

STREET

SUFFIX

PIN

LOCAL SIGNIFICANCE RATING

POTENTIAL IND NR? (Y or N)

Contributing to a NR DISTRICT?

Contributing secondary structure?

Listed on existing SURVEY?



GENERAL INFORMATION

CATEGORY HISTORIC FUNCTION

CONDITION REASON for SIGNIFICANCE

INTEGRITY

SECONDARY STRUCTURE

ARCHITECTURAL DESCRIPTION

ARCHITECTURAL CLASSIFICATION PLAN

DETAILS

BEGINYEAR NO OF STORIES

OTHER YEAR

ROOF TYPE

ROOF MATERIAL

FOUNDATIONSOURCE FOUNDATION

WALL MATERIAL (current) PORCH

WALL MATERIAL 2 (current) WINDOW MATERIAL

WALL MATERIAL (original) WINDOW MATERIAL

WALL MATERIAL 2 (original) WINDOW TYPE

WINDOW CONFIG

SIGNIFICANT FEATURES

ALTERATIONS

HISTORIC INFORMATION

HISTORIC NAME	Saints Peter & Paul Convent
COMMON NAME	Saints Peter & Paul Pastoral Hall
ARCHITECT	
BUILDER	
ARCHITECT SOURCE	
HISTORIC INFO	Historic photograph of building on page 36 of 150 YEARS OF SHARING THE WORD: SS. PETER AND PAUL PARISH--"The plans for the new convent included living space for 22 Sisters, a chapel, a recreation room, a study hall, offices, a refectory and a nursing room. The exterior was to conform to the style of the new junior high building. The project was completed in 1963."
PERMITS	
LANDSCAPE	Northwest corner of Brainard and Benton; front and south sidewalks; mature trees; rear alley
COA DATES	
COA DECISION	
COA Compliance Notes	
COA Work Not Completed	
Work Not Requiring COA	



Work Completed Without COA	
-----------------------------------	--

PREPARER	Lara Ramsey	SURVEYDATE	10/29/2025
ORGANIZATION	RAMSEY HISTORIC CONSULTANTS	SURVEYAREA	NAPERVILLE SURVEY UPDATE

STREET #

DIRECTION

STREET

SUFFIX

PIN

LOCAL SIGNIFICANCE RATING

POTENTIAL IND NR? (Y or N)

Contributing to a NR DISTRICT?

Contributing secondary structure?

Listed on existing SURVEY?



GENERAL INFORMATION

CATEGORY HISTORIC FUNCTION

CONDITION REASON for SIGNIFICANCE

INTEGRITY

SECONDARY STRUCTURE

ARCHITECTURAL DESCRIPTION

ARCHITECTURAL CLASSIFICATION PLAN

DETAILS

BEGINYEAR NO OF STORIES

OTHER YEAR

ROOF TYPE

ROOF MATERIAL

FOUNDATIONSOURCE FOUNDATION

WALL MATERIAL (current) PORCH

WALL MATERIAL 2 (current) WINDOW MATERIAL

WALL MATERIAL (original) WINDOW MATERIAL

WALL MATERIAL 2 (original) WINDOW TYPE

WINDOW CONFIG

SIGNIFICANT FEATURES

ALTERATIONS

HISTORIC INFORMATION

HISTORIC NAME	Carnegie Library
COMMON NAME	Carnegie Hall
ARCHITECT	
BUILDER	
ARCHITECT SOURCE	
HISTORIC INFO	**GUIDE TO CHICAGO'S HISTORIC SUBURBS, P. 408**. After being vacant for many years, the building was rehabbed and re-opened in 1986 (NHS file)
PERMITS	
LANDSCAPE	Northeast corner of Brainard and Benton; at southwest corner of main campus block of North Central College; front, side, and rear sidewalks; building on slight rise; mature trees
COA DATES	
COA DECISION	
COA Compliance Notes	
COA Work Not Completed	
Work Not Requiring COA	



Work Completed Without COA	
-----------------------------------	--

PREPARER	Lara Ramsey	SURVEYDATE	10/29/2025
ORGANIZATION	RAMSEY HISTORIC CONSULTANTS	SURVEYAREA	NAPERVILLE SURVEY UPDATE

City of NAPERVILLE
2025 HISTORIC RESOURCES SURVEY UPDATE
CONTINUATION SHEET

STREET # 10

STREET N. BRAINARD STREET

ADDITIONAL PHOTOS OR INFORMATION

Historic Information

[from A GUIDE TO CHICAGO'S HISTORIC SUBURBS, p. 408]

“This relatively small but quite massive structure shows that, at North Central College, the library was a serious place. It has pairs of Ionic columns flanking the doorway and supporting the pediment which is made of sheet metal, as is the cornice. In the block to which that frontispiece is attached are pairs of arched windows with the extrados of the arch traced in limestone, corresponding to the frontispiece and to the quoins and mud sill of the brick structure.”

STREET #

DIRECTION

STREET

SUFFIX

PIN

LOCAL SIGNIFICANCE RATING

POTENTIAL IND NR? (Y or N)

Contributing to a NR DISTRICT?

Contributing secondary structure?

Listed on existing SURVEY?



GENERAL INFORMATION

CATEGORY HISTORIC FUNCTION

CONDITION REASON for SIGNIFICANCE

INTEGRITY

SECONDARY STRUCTURE

ARCHITECTURAL DESCRIPTION

ARCHITECTURAL CLASSIFICATION PLAN

DETAILS

BEGINYEAR NO OF STORIES

OTHER YEAR

ROOF TYPE

ROOF MATERIAL

FOUNDATION

DATE SOURCE PORCH

WALL MATERIAL (current) WINDOW MATERIAL

WALL MATERIAL 2 (current)

WALL MATERIAL (original) WINDOW MATERIAL

WALL MATERIAL 2 (original)

WINDOW TYPE

WINDOW CONFIG

SIGNIFICANT FEATURES

ALTERATIONS

HISTORIC INFORMATION

HISTORIC NAME	
COMMON NAME	
ARCHITECT	
BUILDER	
ARCHITECT SOURCE	
HISTORIC INFO	Sanborn maps show house with full-front porch through 1954.
PERMITS	
LANDSCAPE	Midblock on west side of residential street; front sidewalk; rear alley; similar setbacks; mature trees; rear fencing
COA DATES	
COA DECISION	
COA Compliance Notes	
COA Work Not Completed	
Work Not Requiring COA	Replacement windows on secondary north and south elevations.



Work Completed Without COA

Replacement windows on front façade – 2007 survey photographs show 1/1 wood windows throughout, with historic wood storms on first story and aluminum storms on second story.

PREPARER	Lara Ramsey	SURVEYDATE	10/29/2025
ORGANIZATION	RAMSEY HISTORIC CONSULTANTS	SURVEYAREA	NAPERVILLE SURVEY UPDATE

STREET #

DIRECTION

STREET

SUFFIX

PIN

LOCAL SIGNIFICANCE RATING

POTENTIAL IND NR? (Y or N)

Contributing to a NR DISTRICT?

Contributing secondary structure?

Listed on existing SURVEY?



GENERAL INFORMATION

CATEGORY HISTORIC FUNCTION

CONDITION REASON for SIGNIFICANCE

INTEGRITY

SECONDARY STRUCTURE

ARCHITECTURAL DESCRIPTION

ARCHITECTURAL CLASSIFICATION PLAN

DETAILS

BEGINYEAR NO OF STORIES

OTHER YEAR

ROOF TYPE

ROOF MATERIAL

FOUNDATIONSOURCE FOUNDATION

WALL MATERIAL (current) PORCH

WALL MATERIAL 2 (current)

WALL MATERIAL (original) WINDOW MATERIAL

WALL MATERIAL 2 (original)

WINDOW MATERIAL

WINDOW TYPE

WINDOW CONFIG

SIGNIFICANT FEATURES

ALTERATIONS

HISTORIC INFORMATION

HISTORIC NAME	Fehlmann, J. House
COMMON NAME	
ARCHITECT	
BUILDER	
ARCHITECT SOURCE	
HISTORIC INFO	
PERMITS	
LANDSCAPE	Midblock on west side of residential street; front sidewalk; rear alley; similar setbacks; mature trees
COA DATES	9/30/2019; 5/28/2015
COA DECISION	COA #19-3674 - In-kind window replacement (approved 10/2/2019); COA #15-2196 - Demolition of existing structure (denied by HPC)
COA Compliance Notes	
COA Work Not Completed	
Work Not Requiring COA	Barn demolished



Work Completed Without COA	
-----------------------------------	--

PREPARER Lara Ramsey

SURVEYDATE 10/29/2025

ORGANIZATION RAMSEY HISTORIC CONSULTANTS

SURVEYAREA NAPERVILLE SURVEY UPDATE

STREET #

DIRECTION

STREET

SUFFIX

PIN

LOCAL SIGNIFICANCE RATING

POTENTIAL IND NR? (Y or N)

Contributing to a NR DISTRICT?

Contributing secondary structure?

Listed on existing SURVEY?



GENERAL INFORMATION

CATEGORY HISTORIC FUNCTION

CONDITION REASON for SIGNIFICANCE

INTEGRITY

SECONDARY STRUCTURE

ARCHITECTURAL DESCRIPTION

ARCHITECTURAL CLASSIFICATION PLAN

DETAILS

BEGINYEAR NO OF STORIES

OTHER YEAR

ROOF TYPE

ROOF MATERIAL

FOUNDATION

DATE SOURCE PORCH

WALL MATERIAL (current) WINDOW MATERIAL

WALL MATERIAL 2 (current)

WALL MATERIAL (original) WINDOW MATERIAL

WALL MATERIAL 2 (original)

WINDOW TYPE

WINDOW CONFIG

SIGNIFICANT FEATURES

ALTERATIONS

HISTORIC INFORMATION

HISTORIC NAME	
COMMON NAME	Saints Peter & Paul Ministry Center
ARCHITECT	
BUILDER	
ARCHITECT SOURCE	
HISTORIC INFO	
PERMITS	
LANDSCAPE	Alternate address--35 N. Ellsworth. Midblock on west side of residential street; front of building faces Ellsworth; large front (west) lawn with rounded wall at front; mature trees
COA DATES	
COA DECISION	
COA Compliance Notes	
COA Work Not Completed	
Work Not Requiring COA	



Work Completed Without COA	
-----------------------------------	--

PREPARER Lara Ramsey

SURVEYDATE 10/29/2025

ORGANIZATION RAMSEY HISTORIC CONSULTANTS

SURVEYAREA NAPERVILLE SURVEY UPDATE

STREET #

DIRECTION

STREET

SUFFIX

PIN

LOCAL SIGNIFICANCE RATING

POTENTIAL IND NR? (Y or N)

Contributing to a NR DISTRICT?

Contributing secondary structure?

Listed on existing SURVEY?



GENERAL INFORMATION

CATEGORY HISTORIC FUNCTION

CONDITION REASON for SIGNIFICANCE

INTEGRITY

SECONDARY STRUCTURE

ARCHITECTURAL DESCRIPTION

ARCHITECTURAL CLASSIFICATION PLAN

DETAILS

BEGINYEAR NO OF STORIES

OTHER YEAR ROOF TYPE

DATESOURCE ROOF MATERIAL

FOUNDATION

WALL MATERIAL (current) PORCH

WALL MATERIAL 2 (current)

WALL MATERIAL (original) WINDOW MATERIAL

WALL MATERIAL 2 (original)

WINDOW MATERIAL

WINDOW TYPE

WINDOW CONFIG

SIGNIFICANT FEATURES

ALTERATIONS

HISTORIC INFORMATION

HISTORIC NAME	Old Main
COMMON NAME	
ARCHITECT	
BUILDER	
ARCHITECT SOURCE	
HISTORIC INFO	Cornerstone dated May 17, 1870--See continuation sheet.
PERMITS	
LANDSCAPE	In center of main campus block for North Central College; building faces west; concrete walkways on all sides; mature trees
COA DATES	1/24/2017
COA DECISION	COA #17-179 - Removing portion of window for air supply (approved 1/25/2017)
COA Compliance Notes	
COA Work Not Completed	
Work Not Requiring COA	



Work Completed Without COA	
-----------------------------------	--

PREPARER	Lara Ramsey	SURVEYDATE	10/29/2025
ORGANIZATION	RAMSEY HISTORIC CONSULTANTS	SURVEYAREA	NAPERVILLE SURVEY UPDATE

City of NAPERVILLE
2025 HISTORIC RESOURCES SURVEY UPDATE
CONTINUATION SHEET

STREET # 30

STREET N. BRAINARD STREET

ADDITIONAL PHOTOS OR INFORMATION

Significant Features

North section is original building, middle section is either original or very early addition (but has been recently altered and added to), south section is historic (1891) addition; mansard roof with modillion cornice and paired scrolled brackets on original, north section; projecting square bay in center of original building (north section) with copper pinnacle on roof; rusticated limestone exterior; round arch and segmental arch window openings; flat arch lintels on first story, flanged segmental arch dormers

Alterations

Original raised front entry was in center of north section—steps to entry have been removed, and entry has been closed with balcony; entry on south (1891) addition was also raised, but has been filled in with ground level window (not historic); top two stories (including mansard roof) of center section are addition from 1998 renovation; south section originally had hipped roof—mansard is an historic alteration; vinyl replacement windows in original openings; replacement entry doors in middle section (probably in altered openings); below grade entry doors on east elevation; elevated patio addition to north elevation.

Post-2007 Alterations

Louvers installed at upper section of first-story window opening on west elevation (2017, COA approved)

Historic Information

From the DuPage County Cultural and Historical Inventory (1993-1996):

“Old Main was the original building of the present campus of North Central College. It was built in 1870 after the college was moved from Plainfield to Naperville. The college was founded by the Evangelical Association. This one building once held all the classrooms, a chapel, meeting halls, a men’s dormitory, library, and an apartment. The building was originally heated by fireplaces and stoves. When the south wing was added in 1891, a heating system was installed.

A music department and women's dormitory were also later added. In 1873, the cost of attending college here was approximately \$50, including tuition, room, board, fuel, and laundry.”

Building was renovated in 1998---[from THE SUN, 10/9/1998, p. 4]:

“The ‘new’ Old Main has an additional 5,000 square feet, provided by two floors built to connect the north and south towers....At one time, Old Main was North Central College. Built in 1870, when the college moved to Naperville from Plainfield, Old Main was constructed without the benefit of blueprints. To get from one tower to the other, you had to go down steep stairs to the bottom of the building and back up again. ‘It was a building with character that became a character,’ Wilde said. People lived, worked and attended classes in the old building.”

STREET #

DIRECTION

STREET

SUFFIX

PIN

LOCAL SIGNIFICANCE RATING

POTENTIAL IND NR? (Y or N)

Contributing to a NR DISTRICT?

Contributing secondary structure?

Listed on existing SURVEY?



GENERAL INFORMATION

CATEGORY HISTORIC FUNCTION

CONDITION REASON for SIGNIFICANCE

INTEGRITY

SECONDARY STRUCTURE

ARCHITECTURAL DESCRIPTION

ARCHITECTURAL CLASSIFICATION PLAN

DETAILS

BEGINYEAR NO OF STORIES

OTHER YEAR

ROOF TYPE

ROOF MATERIAL

FOUNDATIONS

PORCH

WALL MATERIAL (current) WINDOW MATERIAL

WALL MATERIAL 2 (current)

WALL MATERIAL (original) WINDOW MATERIAL

WALL MATERIAL 2 (original) WINDOW TYPE

WINDOW CONFIG

SIGNIFICANT FEATURES Rectangular massing and flat roof; concrete structural fram exposed on exterior; deeply recessed windows at raised basement level and above first story; main (first) story infilled with brick, with vertical and square windows; basement level exposed on primary east elevation; main entrances located at north and south ends of east elevation and accessed via concrete steps

ALTERATIONS Post-2007 -- new fixed windows at south end of west elevation and near center of west elevation

HISTORIC INFORMATION

HISTORIC NAME	Kroehler, Peter Kenneth Science Center
COMMON NAME	School of Business and Entrepreneurship
ARCHITECT	
BUILDER	
ARCHITECT SOURCE	
HISTORIC INFO	
PERMITS	
LANDSCAPE	Midblock on east side of Brainard, at west edge of main campus block; front façade facades east; walkways; mature trees; courtyard east of building
COA DATES	5/25/17
COA DECISION	COA #17-1672 - create and change 2 window openings on the west side (approved by HPC 5/25/17)
COA Compliance Notes	
COA Work Not Completed	
Work Not Requiring COA	



Work Completed Without COA	
-----------------------------------	--

PREPARER	Lara Ramsey	SURVEYDATE	10/29/2025
ORGANIZATION	RAMSEY HISTORIC CONSULTANTS	SURVEYAREA	NAPERVILLE SURVEY UPDATE

STREET #

DIRECTION

STREET

SUFFIX

PIN

LOCAL SIGNIFICANCE RATING

POTENTIAL IND NR? (Y or N)

Contributing to a NR DISTRICT?

Contributing secondary structure?

Listed on existing SURVEY?



GENERAL INFORMATION

CATEGORY HISTORIC FUNCTION

CONDITION REASON for SIGNIFICANCE

INTEGRITY

SECONDARY STRUCTURE

ARCHITECTURAL DESCRIPTION

ARCHITECTURAL CLASSIFICATION PLAN

DETAILS

BEGINYEAR NO OF STORIES

OTHER YEAR

ROOF TYPE

ROOF MATERIAL

FOUNDATIONS

PORCH

WALL MATERIAL (current) WINDOW MATERIAL

WALL MATERIAL 2 (current)

WALL MATERIAL (original) WINDOW MATERIAL

WALL MATERIAL 2 (original)

WINDOW TYPE

WINDOW CONFIG

SIGNIFICANT FEATURES

ALTERATIONS

HISTORIC INFORMATION

HISTORIC NAME

COMMON NAME

ARCHITECT

BUILDER

ARCHITECT SOURCE

HISTORIC INFO

PERMITS

LANDSCAPE

COA DATES

COA DECISION

COA Compliance Notes

COA Work Not Completed

Work Not Requiring COA

PREPARER

SURVEYDATE

ORGANIZATION

SURVEYAREA



Work Completed Without COA

STREET #

DIRECTION

STREET

SUFFIX

PIN

LOCAL SIGNIFICANCE RATING

POTENTIAL IND NR? (Y or N)

Contributing to a NR DISTRICT?

Contributing secondary structure?

Listed on existing SURVEY?



GENERAL INFORMATION

CATEGORY HISTORIC FUNCTION

CONDITION REASON for SIGNIFICANCE

INTEGRITY

SECONDARY STRUCTURE

ARCHITECTURAL DESCRIPTION

ARCHITECTURAL CLASSIFICATION PLAN

DETAILS NO OF STORIES

BEGINYEAR ROOF TYPE

OTHER YEAR ROOF MATERIAL

DATESOURCE FOUNDATION

WALL MATERIAL (current) PORCH

WALL MATERIAL 2 (current) WINDOW MATERIAL

WALL MATERIAL (original) WINDOW MATERIAL

WALL MATERIAL 2 (original) WINDOW TYPE

SIGNIFICANT FEATURES

ALTERATIONS

HISTORIC INFORMATION

HISTORIC NAME

COMMON NAME

ARCHITECT

BUILDER

ARCHITECT SOURCE

HISTORIC INFO

PERMITS

LANDSCAPE

COA DATES

COA DECISION

COA Compliance Notes

COA Work Not Completed

Work Not Requiring COA

PREPARER

SURVEYDATE

ORGANIZATION

SURVEYAREA



Work Completed Without COA

STREET #

DIRECTION

STREET

SUFFIX

PIN

LOCAL SIGNIFICANCE RATING

POTENTIAL IND NR? (Y or N)

Contributing to a NR DISTRICT?

Contributing secondary structure?

Listed on existing SURVEY?



GENERAL INFORMATION

CATEGORY HISTORIC FUNCTION

CONDITION REASON for SIGNIFICANCE

INTEGRITY

SECONDARY STRUCTURE

ARCHITECTURAL DESCRIPTION

ARCHITECTURAL CLASSIFICATION PLAN

DETAILS NO OF STORIES

BEGINYEAR ROOF TYPE

OTHER YEAR ROOF MATERIAL

DATESOURCE FOUNDATION

WALL MATERIAL (current) PORCH

WALL MATERIAL 2 (current) WINDOW MATERIAL

WALL MATERIAL (original) WINDOW MATERIAL

WALL MATERIAL 2 (original) WINDOW TYPE

WINDOW CONFIG

SIGNIFICANT FEATURES

ALTERATIONS

HISTORIC INFORMATION

HISTORIC NAME	
COMMON NAME	
ARCHITECT	
BUILDER	
ARCHITECT SOURCE	
HISTORIC INFO	
PERMITS	
LANDSCAPE	Midblock on west side of residential street; front sidewalk; rear alley; rear wood fence; similar setbacks; mature trees
COA DATES	4/20/2020
COA DECISION	COA #20-832 - In-kind shingle replacement (approved 4/20/2020)
COA Compliance Notes	
COA Work Not Completed	
Work Not Requiring COA	Exterior repainting



Work Completed Without COA	
----------------------------	--

PREPARER	Lara Ramsey
ORGANIZATION	RAMSEY HISTORIC CONSULTANTS

SURVEYDATE	10/29/2025
SURVEYAREA	NAPERVILLE SURVEY UPDATE

STREET #

DIRECTION

STREET

SUFFIX

PIN

LOCAL SIGNIFICANCE RATING

POTENTIAL IND NR? (Y or N)

Contributing to a NR DISTRICT?

Contributing secondary structure?

Listed on existing SURVEY?



GENERAL INFORMATION

CATEGORY HISTORIC FUNCTION

CONDITION REASON for SIGNIFICANCE

INTEGRITY

SECONDARY STRUCTURE

ARCHITECTURAL DESCRIPTION

ARCHITECTURAL CLASSIFICATION PLAN

DETAILS

BEGINYEAR NO OF STORIES

OTHER YEAR

ROOF TYPE

ROOF MATERIAL

FOUNDATION

PORCH

WALL MATERIAL (current) WINDOW MATERIAL

WALL MATERIAL 2 (current) WINDOW MATERIAL

WALL MATERIAL (original) WINDOW TYPE

WALL MATERIAL 2 (original) WINDOW CONFIG

SIGNIFICANT FEATURES

ALTERATIONS

HISTORIC INFORMATION

HISTORIC NAME

COMMON NAME

ARCHITECT

BUILDER

ARCHITECT SOURCE

HISTORIC INFO Sanborn maps show house south/east porch that does not extend past south bay; a second porch was located on the south side of the rear 1-story ell.

PERMITS

LANDSCAPE Midblock on west side of residential street; front sidewalk; rear alley; similar setbacks; mature trees

COA DATES

COA DECISION

COA Compliance Notes

COA Work Not Completed

Work Not Requiring COA New detached garage; exterior repainting

PREPARER

SURVEYDATE

ORGANIZATION

SURVEYAREA



Work Completed Without COA

STREET #

DIRECTION

STREET

SUFFIX

PIN

LOCAL SIGNIFICANCE RATING

POTENTIAL IND NR? (Y or N)

Contributing to a NR DISTRICT?

Contributing secondary structure?

Listed on existing SURVEY?



GENERAL INFORMATION

CATEGORY HISTORIC FUNCTION

CONDITION REASON for SIGNIFICANCE

INTEGRITY

SECONDARY STRUCTURE

ARCHITECTURAL DESCRIPTION

ARCHITECTURAL CLASSIFICATION PLAN

DETAILS NO OF STORIES

BEGINYEAR ROOF TYPE

OTHER YEAR ROOF MATERIAL

DATESOURCE FOUNDATION

WALL MATERIAL (current) PORCH

WALL MATERIAL 2 (current) WINDOW MATERIAL

WALL MATERIAL (original) WINDOW MATERIAL

WALL MATERIAL 2 (original) WINDOW TYPE

WINDOW CONFIG

SIGNIFICANT FEATURES

ALTERATIONS

HISTORIC INFORMATION

HISTORIC NAME

COMMON NAME

ARCHITECT

BUILDER

ARCHITECT SOURCE

HISTORIC INFO

*According to Sanborn maps, rear guest house was originally a stable that was converted into a dwelling between 1909 and 1921. Building is included in A GUIDE TO CHICAGO'S HISTORIC SUBURBS (p. 402).

PERMITS

LANDSCAPE

Midblock on west side of residential street; front sidewalk; rear alley; side driveway; large lot; mature trees

COA DATES

COA DECISION

COA Compliance Notes

COA Work Not Completed

Work Not Requiring COA

PREPARER Lara Ramsey

SURVEYDATE 10/29/2025

ORGANIZATION RAMSEY HISTORIC CONSULTANTS

SURVEYAREA NAPERVILLE SURVEY UPDATE



Work Completed Without COA

City of NAPERVILLE
ILLINOIS URBAN ARCHITECTURAL AND HISTORICAL SURVEY
CONTINUATION SHEET

STREET # 135

STREET N. BRAINARD STREET

ADDITIONAL PHOTOS OR INFORMATION

Significant Features

Hipped roof with paneled frieze; historic 2/2 flattened arch wood windows on front and south elevations with elaborate incised wood surrounds & center keystones; double entry doors with flattened arch transom and incised wood surround; oval north window; two story north bay with 1/1 wood windows; two story south side square bay; three-sided south window bay with historic 1/1 windows

Historic Information

[from A GUIDE TO CHICAGO'S HISTORIC SUBURBS, p. 402]

“...this is a good example of a cubic, Italianate building from the 1870s. Especially notable are the window surrounds which have feet and shoulders and nice incising in the upper parts and the keystone.”

STREET #

DIRECTION

STREET

SUFFIX

PIN

LOCAL SIGNIFICANCE RATING

POTENTIAL IND NR? (Y or N)

Contributing to a NR DISTRICT?

Contributing secondary structure?

Listed on existing SURVEY?



GENERAL INFORMATION

CATEGORY HISTORIC FUNCTION

CONDITION REASON for SIGNIFICANCE

INTEGRITY

SECONDARY STRUCTURE

ARCHITECTURAL DESCRIPTION

ARCHITECTURAL CLASSIFICATION PLAN

DETAILS NO OF STORIES

BEGINYEAR ROOF TYPE

OTHER YEAR ROOF MATERIAL

DATESOURCE FOUNDATION

WALL MATERIAL (current) PORCH

WALL MATERIAL 2 (current) WINDOW MATERIAL

WALL MATERIAL (original) WINDOW MATERIAL

WALL MATERIAL 2 (original) WINDOW TYPE

SIGNIFICANT FEATURES

ALTERATIONS

HISTORIC INFORMATION

HISTORIC NAME	
COMMON NAME	
ARCHITECT	
BUILDER	
ARCHITECT SOURCE	
HISTORIC INFO	
PERMITS	
LANDSCAPE	Midblock on west side of residential street; front sidewalk; rear alley; similar setbacks; mature trees
COA DATES	
COA DECISION	
COA Compliance Notes	
COA Work Not Completed	
Work Not Requiring COA	



Work Completed Without COA	
----------------------------	--

PREPARER	Lara Ramsey	SURVEYDATE	10/29/2025
ORGANIZATION	RAMSEY HISTORIC CONSULTANTS	SURVEYAREA	NAPERVILLE SURVEY UPDATE

STREET #

DIRECTION

STREET

SUFFIX

PIN

LOCAL SIGNIFICANCE RATING

POTENTIAL IND NR? (Y or N)

Contributing to a NR DISTRICT?

Contributing secondary structure?

Listed on existing SURVEY?



GENERAL INFORMATION

CATEGORY HISTORIC FUNCTION

CONDITION REASON for SIGNIFICANCE

INTEGRITY

SECONDARY STRUCTURE

ARCHITECTURAL DESCRIPTION

ARCHITECTURAL CLASSIFICATION PLAN

DETAILS NO OF STORIES

BEGINYEAR ROOF TYPE

OTHER YEAR

ROOF MATERIAL

DATE SOURCE FOUNDATION

WALL MATERIAL (current) PORCH

WALL MATERIAL 2 (current) WINDOW MATERIAL

WALL MATERIAL (original) WINDOW MATERIAL

WALL MATERIAL 2 (original) WINDOW TYPE

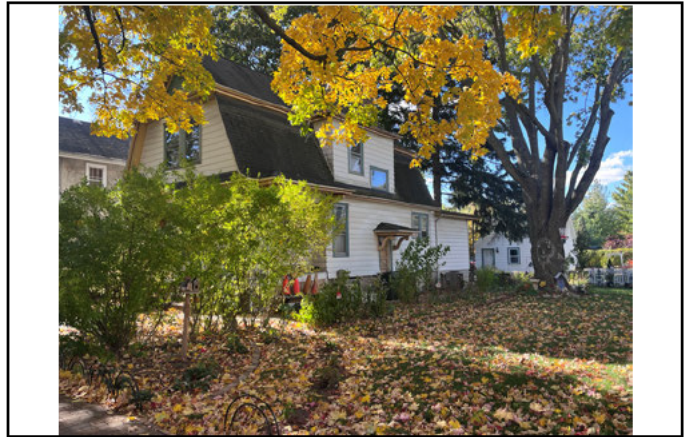
WINDOW CONFIG

SIGNIFICANT FEATURES

ALTERATIONS

HISTORIC INFORMATION

HISTORIC NAME	
COMMON NAME	
ARCHITECT	
BUILDER	
ARCHITECT SOURCE	
HISTORIC INFO	
PERMITS	
LANDSCAPE	Midblock on west side of residential street; rear driveway; front sidewalk; similar setbacks; mature trees
COA DATES	
COA DECISION	
COA Compliance Notes	
COA Work Not Completed	
Work Not Requiring COA	Detached garage replaced



Work Completed Without COA

--

PREPARER Lara Ramsey

SURVEYDATE

10/29/2025

ORGANIZATION RAMSEY HISTORIC CONSULTANTS

SURVEYAREA

NAPERVILLE SURVEY UPDATE

STREET #

DIRECTION

STREET

SUFFIX

PIN

LOCAL SIGNIFICANCE RATING

POTENTIAL IND NR? (Y or N)

Contributing to a NR DISTRICT?

Contributing secondary structure?

Listed on existing SURVEY?



GENERAL INFORMATION

CATEGORY HISTORIC FUNCTION

CONDITION REASON for SIGNIFICANCE

INTEGRITY

SECONDARY STRUCTURE

ARCHITECTURAL DESCRIPTION

ARCHITECTURAL CLASSIFICATION PLAN

DETAILS NO OF STORIES

BEGINYEAR ROOF TYPE

OTHER YEAR ROOF MATERIAL

DATESOURCE FOUNDATION

WALL MATERIAL (current) PORCH

WALL MATERIAL 2 (current) WINDOW MATERIAL

WALL MATERIAL (original) WINDOW MATERIAL

WALL MATERIAL 2 (original) WINDOW TYPE

WINDOW CONFIG

SIGNIFICANT FEATURES

ALTERATIONS

HISTORIC INFORMATION

HISTORIC NAME	Leffler, Jeremiah House
COMMON NAME	
ARCHITECT	
BUILDER	
ARCHITECT SOURCE	
HISTORIC INFO	
PERMITS	
LANDSCAPE	Southwest corner of School and Brainard; front and north sidewalks; rear alley; similar setbacks; mature trees
COA DATES	5/25/2023
COA DECISION	COA #23-1617 - In-kind roof replacement (approved 5/26/2023)
COA Compliance Notes	
COA Work Not Completed	
Work Not Requiring COA	Repainting



Work Completed Without COA	
-----------------------------------	--

PREPARER	Lara Ramsey	SURVEYDATE	10/29/2025
ORGANIZATION	RAMSEY HISTORIC CONSULTANTS	SURVEYAREA	NAPERVILLE SURVEY UPDATE

STREET #

DIRECTION

STREET

SUFFIX

PIN

LOCAL SIGNIFICANCE RATING

POTENTIAL IND NR? (Y or N)

Contributing to a NR DISTRICT?

Contributing secondary structure?

Listed on existing SURVEY?



GENERAL INFORMATION

CATEGORY HISTORIC FUNCTION

CONDITION REASON for SIGNIFICANCE

INTEGRITY

SECONDARY STRUCTURE

ARCHITECTURAL DESCRIPTION

ARCHITECTURAL CLASSIFICATION PLAN

DETAILS

BEGINYEAR NO OF STORIES

OTHER YEAR

ROOF TYPE

ROOF MATERIAL

FOUNDATIONS

PORCH

WALL MATERIAL (current) WINDOW MATERIAL

WALL MATERIAL 2 (current)

WALL MATERIAL (original) WINDOW MATERIAL

WALL MATERIAL 2 (original)

WINDOW TYPE

WINDOW CONFIG

SIGNIFICANT FEATURES

ALTERATIONS

HISTORIC INFORMATION

HISTORIC NAME	
COMMON NAME	
ARCHITECT	
BUILDER	
ARCHITECT SOURCE	
HISTORIC INFO	Historic photograph of house included with house history questionnaire returned by owner. The house was occupied by G. B. Kimmel through the 1930s -- Kimmel served as president of the theological seminary associated with North Central College.
PERMITS	
LANDSCAPE	Northwest corner of Brainard and School; front and south sidewalks; oversized lot; wrought iron fence; rear alley; mature trees
COA DATES	10/6/2010; 10/28/2011; 5/28/2020
COA DECISION	COA #10-2893 - Window replacement (approved 10/8/2010); COA #11-3735 - Window Replacement (approved 11/1/2011); COA #20-987 - Expand front porch, new sunroom window replacement from two separated windows to three windows next to each other (approved by HPC 5/28/20); COA #20-1569 - Add outdoor chimney to primary façade (approved by HPC 6/25/20)
COA Compliance Notes	
COA Work Not Completed	Chimney addition to primary façade (COA #20-1569)
Work Not Requiring COA	



Work Completed Without COA	
----------------------------	--

PREPARER Lara Ramsey

SURVEYDATE 10/29/2025

ORGANIZATION RAMSEY HISTORIC CONSULTANTS

SURVEYAREA NAPERVILLE SURVEY UPDATE

City of NAPERVILLE
2025 HISTORIC RESOURCES SURVEY UPDATE
CONTINUATION SHEET

STREET # 209

STREET N. BRAINARD STREET

ADDITIONAL PHOTOS OR INFORMATION

Historic Photograph (provided by owner)



STREET #

DIRECTION

STREET

SUFFIX

PIN

LOCAL SIGNIFICANCE RATING

POTENTIAL IND NR? (Y or N)

Contributing to a NR DISTRICT?

Contributing secondary structure?

Listed on existing SURVEY?



GENERAL INFORMATION

CATEGORY HISTORIC FUNCTION

CONDITION REASON for SIGNIFICANCE

INTEGRITY

SECONDARY STRUCTURE

ARCHITECTURAL DESCRIPTION

ARCHITECTURAL CLASSIFICATION PLAN

DETAILS NO OF STORIES

BEGINYEAR ROOF TYPE

OTHER YEAR ROOF MATERIAL

DATESOURCE FOUNDATION

WALL MATERIAL (current) PORCH

WALL MATERIAL 2 (current) WINDOW MATERIAL

WALL MATERIAL (original) WINDOW MATERIAL

WALL MATERIAL 2 (original) WINDOW TYPE

WINDOW CONFIG

SIGNIFICANT FEATURES

ALTERATIONS

HISTORIC INFORMATION

HISTORIC NAME	
COMMON NAME	
ARCHITECT	
BUILDER	
ARCHITECT SOURCE	
HISTORIC INFO	
PERMITS	
LANDSCAPE	Midblock on west side of residential street; front sidewalk; large lot; mature trees; rear alley
COA DATES	12/11/2015
COA DECISION	COA #15-4313 - In-kind replacement of siding and window trim (approved 12/14/2015)
COA Compliance Notes	
COA Work Not Completed	
Work Not Requiring COA	



Work Completed Without COA

Replacement windows in original openings on front façade; replacement front entry doors.

PREPARER Lara Ramsey

SURVEYDATE

10/29/2025

ORGANIZATION RAMSEY HISTORIC CONSULTANTS

SURVEYAREA

NAPERVILLE SURVEY UPDATE

STREET #

DIRECTION

STREET

SUFFIX

PIN

LOCAL SIGNIFICANCE RATING

POTENTIAL IND NR? (Y or N)

Contributing to a NR DISTRICT?

Contributing secondary structure?

Listed on existing SURVEY?



GENERAL INFORMATION

CATEGORY HISTORIC FUNCTION

CONDITION REASON for SIGNIFICANCE

INTEGRITY

SECONDARY STRUCTURE

ARCHITECTURAL DESCRIPTION

ARCHITECTURAL CLASSIFICATION PLAN

DETAILS NO OF STORIES

BEGINYEAR ROOF TYPE

OTHER YEAR

ROOF MATERIAL

DATE SOURCE FOUNDATION

WALL MATERIAL (current) PORCH

WALL MATERIAL 2 (current)

WALL MATERIAL (original) WINDOW MATERIAL

WALL MATERIAL 2 (original)

WINDOW MATERIAL

WINDOW TYPE

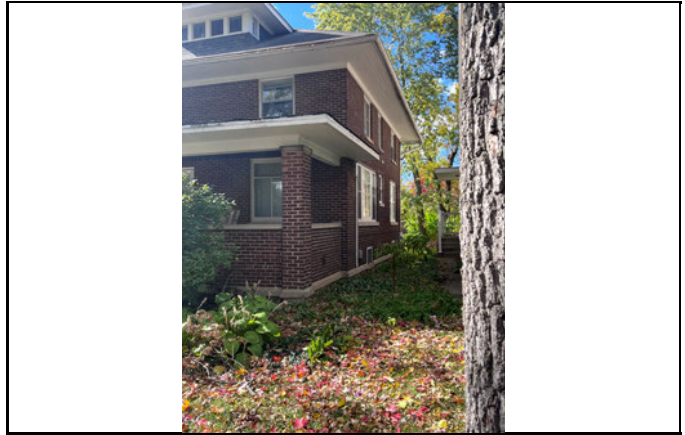
WINDOW CONFIG

SIGNIFICANT FEATURES

ALTERATIONS

HISTORIC INFORMATION

HISTORIC NAME	
COMMON NAME	
ARCHITECT	
BUILDER	
ARCHITECT SOURCE	
HISTORIC INFO	
PERMITS	
LANDSCAPE	Midblock on west side of residential street; front sidewalk; rear alley; similar setbacks; mature trees
COA DATES	
COA DECISION	
COA Compliance Notes	
COA Work Not Completed	
Work Not Requiring COA	



Work Completed Without COA	
----------------------------	--

PREPARER	Lara Ramsey	SURVEYDATE	10/29/2025
ORGANIZATION	RAMSEY HISTORIC CONSULTANTS	SURVEYAREA	NAPERVILLE SURVEY UPDATE

STREET #

DIRECTION

STREET

SUFFIX

PIN

LOCAL SIGNIFICANCE RATING

POTENTIAL IND NR? (Y or N)

Contributing to a NR DISTRICT?

Contributing secondary structure?

Listed on existing SURVEY?



GENERAL INFORMATION

CATEGORY HISTORIC FUNCTION

CONDITION REASON for SIGNIFICANCE

INTEGRITY

SECONDARY STRUCTURE

ARCHITECTURAL DESCRIPTION

ARCHITECTURAL CLASSIFICATION PLAN

DETAILS

BEGINYEAR NO OF STORIES

OTHER YEAR

ROOF TYPE

ROOF MATERIAL

FOUNDATION

PORCH

WALL MATERIAL (current) WINDOW MATERIAL

WALL MATERIAL 2 (current)

WALL MATERIAL (original) WINDOW MATERIAL

WALL MATERIAL 2 (original)

WINDOW TYPE

WINDOW CONFIG

SIGNIFICANT FEATURES

ALTERATIONS

HISTORIC INFORMATION

HISTORIC NAME

COMMON NAME

ARCHITECT

BUILDER

ARCHITECT SOURCE

HISTORIC INFO

PERMITS

LANDSCAPE Midblock on west side of residential street; front sidewalk; rear alley; similar setbacks; mature trees

COA DATES

COA DECISION

COA Compliance Notes

COA Work Not Completed

Work Not Requiring COA Replacement windows on secondary north and south elevations; replacement of railings at entrance steps on secondary north and south elevations.

PREPARER

SURVEYDATE

ORGANIZATION

SURVEYAREA



Work Completed Without COA

STREET #

DIRECTION

STREET

SUFFIX

PIN

LOCAL SIGNIFICANCE RATING

POTENTIAL IND NR? (Y or N)

Contributing to a NR DISTRICT?

Contributing secondary structure?

Listed on existing SURVEY?



GENERAL INFORMATION

CATEGORY HISTORIC FUNCTION

CONDITION REASON for SIGNIFICANCE

INTEGRITY

SECONDARY STRUCTURE

ARCHITECTURAL DESCRIPTION

ARCHITECTURAL CLASSIFICATION PLAN

DETAILS

BEGINYEAR NO OF STORIES

OTHER YEAR

ROOF TYPE

ROOF MATERIAL

FOUNDATION

DATE SOURCE PORCH

WALL MATERIAL (current) WINDOW MATERIAL

WALL MATERIAL 2 (current)

WALL MATERIAL (original) WINDOW MATERIAL

WALL MATERIAL 2 (original)

WINDOW TYPE

WINDOW CONFIG

SIGNIFICANT FEATURES

ALTERATIONS

HISTORIC INFORMATION

HISTORIC NAME

COMMON NAME

ARCHITECT

BUILDER

ARCHITECT SOURCE

HISTORIC INFO

PERMITS

LANDSCAPE Southwest corner of North and Brainard; front and north sidewalks; rear alley; similar setbacks; mature trees

COA DATES

COA DECISION

COA Compliance Notes

COA Work Not Completed

Work Not Requiring COA Replacement windows on secondary elevations.

PREPARER

SURVEYDATE

ORGANIZATION

SURVEYAREA



Work Completed Without COA

Replacement windows on front façade.

STREET #

DIRECTION

STREET

SUFFIX

PIN

LOCAL SIGNIFICANCE RATING

POTENTIAL IND NR? (Y or N)

Contributing to a NR DISTRICT?

Contributing secondary structure?

Listed on existing SURVEY?



GENERAL INFORMATION

CATEGORY HISTORIC FUNCTION

CONDITION REASON for SIGNIFICANCE

INTEGRITY

SECONDARY STRUCTURE

ARCHITECTURAL DESCRIPTION

ARCHITECTURAL CLASSIFICATION PLAN

DETAILS NO OF STORIES

BEGINYEAR ROOF TYPE

OTHER YEAR ROOF MATERIAL

DATESOURCE FOUNDATION

WALL MATERIAL (current) PORCH

WALL MATERIAL 2 (current) WINDOW MATERIAL

WALL MATERIAL (original) WINDOW MATERIAL

WALL MATERIAL 2 (original) WINDOW TYPE

WINDOW CONFIG

SIGNIFICANT FEATURES

ALTERATIONS

HISTORIC INFORMATION

HISTORIC NAME

COMMON NAME

ARCHITECT

BUILDER

ARCHITECT SOURCE

HISTORIC INFO

PERMITS

LANDSCAPE Southeast corner of North and Brainard; front and north sidewalks; privacy plantings

COA DATES

COA DECISION

COA Compliance Notes

COA Work Not Completed

Work Not Requiring COA

Work Completed Without COA

PREPARER

SURVEYDATE

ORGANIZATION

SURVEYAREA

STREET #

DIRECTION

STREET

SUFFIX

PIN

LOCAL SIGNIFICANCE RATING

POTENTIAL IND NR? (Y or N)

Contributing to a NR DISTRICT?

Contributing secondary structure?

Listed on existing SURVEY?



GENERAL INFORMATION

CATEGORY HISTORIC FUNCTION

CONDITION REASON for SIGNIFICANCE

INTEGRITY

SECONDARY STRUCTURE

ARCHITECTURAL DESCRIPTION

ARCHITECTURAL CLASSIFICATION PLAN

DETAILS

BEGINYEAR NO OF STORIES

OTHER YEAR

ROOF TYPE

ROOF MATERIAL

FOUNDATIONSOURCE FOUNDATION

WALL MATERIAL (current) PORCH

WALL MATERIAL 2 (current)

WALL MATERIAL (original) WINDOW MATERIAL

WALL MATERIAL 2 (original)

WINDOW MATERIAL

WINDOW TYPE

WINDOW CONFIG

SIGNIFICANT FEATURES

ALTERATIONS

HISTORIC INFORMATION

HISTORIC NAME	
COMMON NAME	
ARCHITECT	
BUILDER	
ARCHITECT SOURCE	
HISTORIC INFO	
PERMITS	
LANDSCAPE	Southwest corner of Brainard and Benton; front and north sidewalks; partial side driveway; rear fencing; south side yard; mature trees
COA DATES	
COA DECISION	
COA Compliance Notes	
COA Work Not Completed	
Work Not Requiring COA	



Work Completed Without COA

--

PREPARER	Lara Ramsey
ORGANIZATION	RAMSEY HISTORIC CONSULTANTS

SURVEYDATE	10/29/2025
SURVEYAREA	NAPERVILLE SURVEY UPDATE

STREET #

DIRECTION

STREET

SUFFIX

PIN

LOCAL SIGNIFICANCE RATING

POTENTIAL IND NR? (Y or N)

Contributing to a NR DISTRICT?

Contributing secondary structure?

Listed on existing SURVEY?



GENERAL INFORMATION

CATEGORY HISTORIC FUNCTION

CONDITION REASON for SIGNIFICANCE

INTEGRITY

SECONDARY STRUCTURE

ARCHITECTURAL DESCRIPTION

ARCHITECTURAL CLASSIFICATION PLAN

DETAILS NO OF STORIES

BEGINYEAR ROOF TYPE

OTHER YEAR ROOF MATERIAL

DATESOURCE FOUNDATION

WALL MATERIAL (current) PORCH

WALL MATERIAL 2 (current) WINDOW MATERIAL

WALL MATERIAL (original) WINDOW MATERIAL

WALL MATERIAL 2 (original) WINDOW TYPE

WINDOW CONFIG

SIGNIFICANT FEATURES Flared hipped roof with overhanging eaves; front and north side gables w/ deep cornice returns; historic hipped porch w/ rounded columns on concrete block piers; historic leaded glass double and single hung windows; north side three-sided window bay with flared roof and leaded glass upper sashes in windows

ALTERATIONS Aluminum siding (not historic); replacement 1/1 windows in original openings (not historic); fixed shutters (not historic); 1 story rear addition; 8/8 wood windows on south elevation (historic). Post-2007 -- in-kind replacement of front steps (2020)

HISTORIC INFORMATION

HISTORIC NAME	
COMMON NAME	
ARCHITECT	
BUILDER	
ARCHITECT SOURCE	
HISTORIC INFO	
PERMITS	
LANDSCAPE	Midblock on west side of residential street; front sidewalk; rear alley; similar setbacks; mature trees
COA DATES	8/4/2020
COA DECISION	COA #20-2688 - In-kind front porch stair replacement (approved 8/6/2020)
COA Compliance Notes	
COA Work Not Completed	
Work Not Requiring COA	



Work Completed Without COA

--

PREPARER Lara Ramsey

SURVEYDATE

10/29/2025

ORGANIZATION RAMSEY HISTORIC CONSULTANTS

SURVEYAREA

NAPERVILLE SURVEY UPDATE

STREET #

DIRECTION

STREET

SUFFIX

PIN

LOCAL SIGNIFICANCE RATING

POTENTIAL IND NR? (Y or N)

Contributing to a NR DISTRICT?

Contributing secondary structure?

Listed on existing SURVEY?



GENERAL INFORMATION

CATEGORY HISTORIC FUNCTION

CONDITION REASON for SIGNIFICANCE

INTEGRITY

SECONDARY STRUCTURE

ARCHITECTURAL DESCRIPTION

ARCHITECTURAL CLASSIFICATION PLAN

DETAILS NO OF STORIES

BEGINYEAR ROOF TYPE

OTHER YEAR ROOF MATERIAL

DATESOURCE FOUNDATION

WALL MATERIAL (current) PORCH

WALL MATERIAL 2 (current) WINDOW MATERIAL

WALL MATERIAL (original) WINDOW MATERIAL

WALL MATERIAL 2 (original) WINDOW TYPE

WINDOW CONFIG

SIGNIFICANT FEATURES

ALTERATIONS

HISTORIC INFORMATION

HISTORIC NAME	Second Evangelical Church Parsonage
COMMON NAME	
ARCHITECT	
BUILDER	
ARCHITECT SOURCE	
HISTORIC INFO	House received plaque from the Naperville Heritage Society in 2006. The house was built in 1908 as a parsonage for Second Evangelical Church. The Jaeck family purchased it from the church and later deeded it to their daughter and son-in-law, Minnie & William C. Scherer.
PERMITS	
LANDSCAPE	Midblock on west side of residential street; front sidewalk; rear alley; similar setbacks; mature trees
COA DATES	
COA DECISION	
COA Compliance Notes	
COA Work Not Completed	
Work Not Requiring COA	Exterior repainting



Work Completed Without COA

--

PREPARER	Lara Ramsey	SURVEYDATE	10/29/2025
ORGANIZATION	RAMSEY HISTORIC CONSULTANTS	SURVEYAREA	NAPERVILLE SURVEY UPDATE

STREET #

DIRECTION

STREET

SUFFIX

PIN

LOCAL SIGNIFICANCE RATING

POTENTIAL IND NR? (Y or N)

Contributing to a NR DISTRICT?

Contributing secondary structure?

Listed on existing SURVEY?



GENERAL INFORMATION

CATEGORY HISTORIC FUNCTION

CONDITION REASON for SIGNIFICANCE

INTEGRITY

SECONDARY STRUCTURE

ARCHITECTURAL DESCRIPTION

ARCHITECTURAL CLASSIFICATION PLAN

DETAILS

BEGINYEAR NO OF STORIES

OTHER YEAR

ROOF TYPE

ROOF MATERIAL

FOUNDATION

PORCH

WALL MATERIAL (current) WINDOW MATERIAL

WALL MATERIAL 2 (current)

WALL MATERIAL (original) WINDOW MATERIAL

WALL MATERIAL 2 (original)

WINDOW TYPE

WINDOW CONFIG

SIGNIFICANT FEATURES

ALTERATIONS

HISTORIC INFORMATION

HISTORIC NAME Stone, Leah House

COMMON NAME

ARCHITECT

BUILDER

ARCHITECT SOURCE

HISTORIC INFO According to title research on file at Naper Settlement, house was probably built in mid-1870s. See continuation sheet.

PERMITS

LANDSCAPE Midblock on west side of residential street; front sidewalk; rear alley; similar setbacks; mature trees

COA DATES

COA DECISION

COA Compliance Notes

COA Work Not Completed

Work Not Requiring COA

PREPARER Lara Ramsey

SURVEYDATE

ORGANIZATION RAMSEY HISTORIC CONSULTANTS

SURVEYAREA



Work Completed Without COA

Blank box for work completed without COA.

10/29/2025

NAPERVILLE SURVEY UPDATE

City of NAPERVILLE
2025 HISTORIC RESOURCES SURVEY UPDATE
CONTINUATION SHEET

STREET # 21

STREET S. BRAINARD STREET

ADDITIONAL PHOTOS OR INFORMATION

Historic Information

[taken from address files at Naperville Heritage Society Research Room]

Lot 4 Block 7 Delcar Sleight's Addition

From Samuel Barr to Leah Stone (WD) dated 10/4/1872---\$350.00

From Susan Stoner to Laura Ebright (WD) dated 6/13/1917--\$2,400.00

From Laura Ebright to George Koob, Jr. (WD) 1/24/1920--\$4,500.00

STREET #

DIRECTION

STREET

SUFFIX

PIN

LOCAL SIGNIFICANCE RATING

POTENTIAL IND NR? (Y or N)

Contributing to a NR DISTRICT?

Contributing secondary structure?

Listed on existing SURVEY?



GENERAL INFORMATION

CATEGORY HISTORIC FUNCTION

CONDITION REASON for SIGNIFICANCE

INTEGRITY

SECONDARY STRUCTURE

ARCHITECTURAL DESCRIPTION

ARCHITECTURAL CLASSIFICATION PLAN

DETAILS NO OF STORIES

BEGINYEAR ROOF TYPE

OTHER YEAR ROOF MATERIAL

DATESOURCE FOUNDATION

WALL MATERIAL (current) PORCH

WALL MATERIAL 2 (current) WINDOW MATERIAL

WALL MATERIAL (original) WINDOW MATERIAL

WALL MATERIAL 2 (original) WINDOW TYPE

WINDOW CONFIG

SIGNIFICANT FEATURES Side gable roof w/ cornice returns; front 2 story bay w/ pent front gable; inset front entry porch w/ paneled frieze, paired brackets, & square classical columns on solid knee wall; historic 1/1 wood double hung windows; S. square window bay w/ hip roof

ALTERATIONS 1 story rear addition; replacement 3/1 windows in original openings (historic); replacement multi-light windows in altered openings on first floor (historic); panels & brackets appear to be new/salvaged. Post-2007 -- no changes.

HISTORIC INFORMATION

HISTORIC NAME	
COMMON NAME	
ARCHITECT	
BUILDER	
ARCHITECT SOURCE	
HISTORIC INFO	House first appears on 1909 Sanborn map.
PERMITS	
LANDSCAPE	Midblock on west side of residential street; front sidewalk; rear driveway; similar setbacks; mature trees
COA DATES	
COA DECISION	
COA Compliance Notes	
COA Work Not Completed	
Work Not Requiring COA	
PREPARER	Lara Ramsey
ORGANIZATION	RAMSEY HISTORIC CONSULTANTS
SURVEYDATE	10/29/2025
SURVEYAREA	NAPERVILLE SURVEY UPDATE



Work Completed Without COA	
----------------------------	--

STREET #

DIRECTION

STREET

SUFFIX

PIN

LOCAL SIGNIFICANCE RATING

POTENTIAL IND NR? (Y or N)

Contributing to a NR DISTRICT?

Contributing secondary structure?

Listed on existing SURVEY?



GENERAL INFORMATION

CATEGORY HISTORIC FUNCTION

CONDITION REASON for SIGNIFICANCE

INTEGRITY

SECONDARY STRUCTURE

ARCHITECTURAL DESCRIPTION

ARCHITECTURAL CLASSIFICATION PLAN

DETAILS NO OF STORIES

BEGINYEAR ROOF TYPE

OTHER YEAR ROOF MATERIAL

DATESOURCE FOUNDATION

WALL MATERIAL (current) PORCH

WALL MATERIAL 2 (current) WINDOW MATERIAL

WALL MATERIAL (original) WINDOW MATERIAL

WALL MATERIAL 2 (original) WINDOW TYPE

WINDOW CONFIG

SIGNIFICANT FEATURES

ALTERATIONS

HISTORIC INFORMATION

HISTORIC NAME	Heidner, Rev. Frederick William House
COMMON NAME	
ARCHITECT	
BUILDER	
ARCHITECT SOURCE	
HISTORIC INFO	Heidner was professor of German languages at North Central College. Subsequent owners included the Kieserg Family and Ellis Family. Lou and Sally Benton occupied the house from the 1960s to 1997, and were active with the Naperville Heritage Society and Naper Settlement.
PERMITS	Sanborns dating from 1898 show the rear north and south porches in essentially the same configuration as they are now.
LANDSCAPE	Northeast corner of Brainard & Van Buren; front and south sidewalks; rear alley; large north side yard; mature trees
COA DATES	
COA DECISION	
COA Compliance Notes	
COA Work Not Completed	
Work Not Requiring COA	



Work Completed Without COA	
-----------------------------------	--

PREPARER	Lara Ramsey	SURVEYDATE	10/29/2025
ORGANIZATION	RAMSEY HISTORIC CONSULTANTS	SURVEYAREA	NAPERVILLE SURVEY UPDATE

STREET #

DIRECTION

STREET

SUFFIX

PIN

LOCAL SIGNIFICANCE RATING

POTENTIAL IND NR? (Y or N)

Contributing to a NR DISTRICT?

Contributing secondary structure?

Listed on existing SURVEY?



GENERAL INFORMATION

CATEGORY HISTORIC FUNCTION

CONDITION REASON for SIGNIFICANCE

INTEGRITY

SECONDARY STRUCTURE

ARCHITECTURAL DESCRIPTION

ARCHITECTURAL CLASSIFICATION PLAN

DETAILS NO OF STORIES

BEGINYEAR ROOF TYPE

OTHER YEAR ROOF MATERIAL

DATESOURCE FOUNDATION

WALL MATERIAL (current) PORCH

WALL MATERIAL 2 (current) WINDOW MATERIAL

WALL MATERIAL (original) WINDOW MATERIAL

WALL MATERIAL 2 (original) WINDOW TYPE

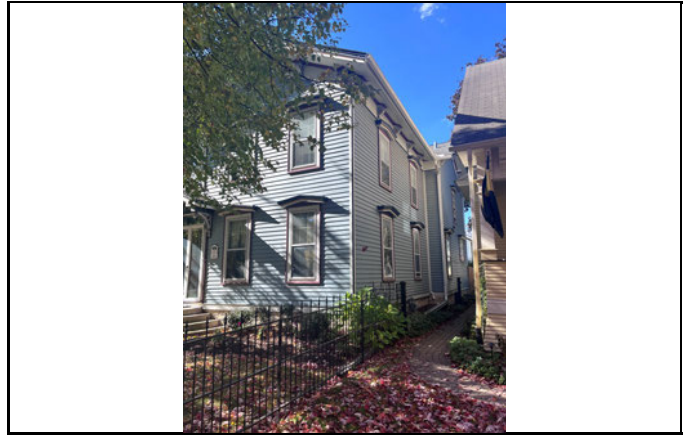
WINDOW CONFIG

SIGNIFICANT FEATURES

ALTERATIONS

HISTORIC INFORMATION

HISTORIC NAME	Stephens, Mathias A. House
COMMON NAME	
ARCHITECT	
BUILDER	Stephens, Mathias A.
ARCHITECT SOURCE	
HISTORIC INFO	Stephens, a carpenter, bought the lot in 1871 and built the house in 1873. Sanborn maps dating from 1893 show rear gabled 2 story section of house; Sanborns from 1893 through 1943 show bldg w/ full front porch.
PERMITS	
LANDSCAPE	Northwest corner of Van Buren and Brainard; front and south sidewalks; wrought iron fence; similar setbacks; mature trees
COA DATES	
COA DECISION	
COA Compliance Notes	
COA Work Not Completed	
Work Not Requiring COA	



Work Completed Without COA	
----------------------------	--

PREPARER	Lara Ramsey	SURVEYDATE	10/29/2025
ORGANIZATION	RAMSEY HISTORIC CONSULTANTS	SURVEYAREA	NAPERVILLE SURVEY UPDATE

STREET #

DIRECTION

STREET

SUFFIX

PIN

LOCAL SIGNIFICANCE RATING

POTENTIAL IND NR? (Y or N)

Contributing to a NR DISTRICT?

Contributing secondary structure?

Listed on existing SURVEY?



GENERAL INFORMATION

CATEGORY HISTORIC FUNCTION

CONDITION

INTEGRITY

REASON for SIGNIFICANCE

SECONDARY STRUCTURE

ARCHITECTURAL DESCRIPTION

ARCHITECTURAL CLASSIFICATION PLAN

DETAILS

BEGINYEAR

OTHER YEAR

DATESOURCE

WALL MATERIAL (current)

WALL MATERIAL 2 (current)

WALL MATERIAL (original)

WALL MATERIAL 2 (original)

NO OF STORIES

ROOF TYPE

ROOF MATERIAL

FOUNDATION

PORCH

WINDOW MATERIAL

WINDOW MATERIAL

WINDOW TYPE

WINDOW CONFIG

SIGNIFICANT FEATURES

ALTERATIONS

HISTORIC INFORMATION

HISTORIC NAME

COMMON NAME

ARCHITECT

BUILDER

ARCHITECT SOURCE

HISTORIC INFO Former site of "Three Elms," the home of Henry Rassweller, 2nd president of North Central College. The house was demolished in 1971.

PERMITS

LANDSCAPE

COA DATES 8/16/2012

COA DECISION COA #12-2643 - Two new access drives on Van Buren Avenue for renovated parking lot (approved by HPC 8/16/2012)

COA Compliance Notes Access drives placed on north side of parking lot.

COA Work Not Completed

Work Not Requiring COA

PREPARER Lara Ramsey

SURVEYDATE 10/29/2025

ORGANIZATION RAMSEY HISTORIC CONSULTANTS

SURVEYAREA NAPERVILLE SURVEY UPDATE



Work Completed Without COA

STREET #

DIRECTION

STREET

SUFFIX

PIN

LOCAL SIGNIFICANCE RATING

POTENTIAL IND NR? (Y or N)

Contributing to a NR DISTRICT?

Contributing secondary structure?

Listed on existing SURVEY?



GENERAL INFORMATION

CATEGORY HISTORIC FUNCTION

CONDITION REASON for SIGNIFICANCE

INTEGRITY

SECONDARY STRUCTURE

ARCHITECTURAL DESCRIPTION

ARCHITECTURAL CLASSIFICATION PLAN

DETAILS

BEGINYEAR NO OF STORIES

OTHER YEAR

ROOF TYPE

ROOF MATERIAL

FOUNDATION

PORCH

WALL MATERIAL (current) WINDOW MATERIAL

WALL MATERIAL 2 (current) WINDOW MATERIAL

WALL MATERIAL (original) WINDOW TYPE

WALL MATERIAL 2 (original) WINDOW CONFIG

SIGNIFICANT FEATURES

ALTERATIONS

HISTORIC INFORMATION

HISTORIC NAME	Boecker House
COMMON NAME	
ARCHITECT	
BUILDER	
ARCHITECT SOURCE	
HISTORIC INFO	
PERMITS	
LANDSCAPE	Southwest corner of Brainard and Van Buren; front and north sidewalks; rear driveway; similar setbacks; mature trees
COA DATES	8/22/2016
COA DECISION	COA #16-3264 - In-kind shingle replacement (approved 8/23/2016)
COA Compliance Notes	
COA Work Not Completed	
Work Not Requiring COA	



Work Completed Without COA	
-----------------------------------	--

PREPARER	Lara Ramsey	SURVEYDATE	10/29/2025
ORGANIZATION	RAMSEY HISTORIC CONSULTANTS	SURVEYAREA	NAPERVILLE SURVEY UPDATE

STREET #

DIRECTION

STREET

SUFFIX

PIN

LOCAL SIGNIFICANCE RATING

POTENTIAL IND NR? (Y or N)

Contributing to a NR DISTRICT?

Contributing secondary structure?

Listed on existing SURVEY?



GENERAL INFORMATION

CATEGORY HISTORIC FUNCTION

CONDITION REASON for SIGNIFICANCE

INTEGRITY

SECONDARY STRUCTURE

ARCHITECTURAL DESCRIPTION

ARCHITECTURAL CLASSIFICATION PLAN

DETAILS

BEGINYEAR NO OF STORIES

OTHER YEAR

ROOF TYPE

ROOF MATERIAL

FOUNDATION

OWNER PORCH

WALL MATERIAL (current) WINDOW MATERIAL

WALL MATERIAL 2 (current)

WALL MATERIAL (original) WINDOW MATERIAL

WALL MATERIAL 2 (original) WINDOW TYPE

WINDOW CONFIG

SIGNIFICANT FEATURES

ALTERATIONS

HISTORIC INFORMATION

HISTORIC NAME

COMMON NAME

ARCHITECT

BUILDER

ARCHITECT SOURCE

HISTORIC INFO

PERMITS

LANDSCAPE Midblock on west side of residential street; front sidewalk; rear alley; similar setbacks; mature trees

COA DATES

COA DECISION

COA Compliance Notes

COA Work Not Completed

Work Not Requiring COA Trim and shutters repainted.

PREPARER

SURVEYDATE

ORGANIZATION

SURVEYAREA



Work Completed Without COA

STREET #

DIRECTION

STREET

SUFFIX

PIN

LOCAL SIGNIFICANCE RATING

POTENTIAL IND NR? (Y or N)

Contributing to a NR DISTRICT?

Contributing secondary structure?

Listed on existing SURVEY?



GENERAL INFORMATION

CATEGORY HISTORIC FUNCTION

CONDITION REASON for SIGNIFICANCE

INTEGRITY

SECONDARY STRUCTURE

ARCHITECTURAL DESCRIPTION

ARCHITECTURAL CLASSIFICATION PLAN

DETAILS

BEGINYEAR NO OF STORIES

OTHER YEAR

ROOF TYPE

ROOF MATERIAL

FOUNDATION

DATE SOURCE PORCH

WALL MATERIAL (current) WINDOW MATERIAL

WALL MATERIAL 2 (current)

WALL MATERIAL (original) WINDOW MATERIAL

WALL MATERIAL 2 (original)

WINDOW TYPE

WINDOW CONFIG

SIGNIFICANT FEATURES Side gable roof with north end chimney and cornice returns; center eyebrow window; symmetrical front façade; center entry with single sidelights; historic 4/1 and 3/1 wood windows

ALTERATIONS Front porch with concrete stoop and wrought iron railings (post-1943); 1 story rear addition (may have originally been rear porch that was enclosed); wood exterior stair addition. Post-2007 -- no changes.

HISTORIC INFORMATION

HISTORIC NAME	Boecker, Peter house
COMMON NAME	
ARCHITECT	
BUILDER	
ARCHITECT SOURCE	
HISTORIC INFO	
PERMITS	Sanborn map from 1949 (Sheet 15) shows house with no front entry porch.
LANDSCAPE	Midblock on east side of residential street; front sidewalks; rear alley; parking lot to north; similar setbacks; mature trees
COA DATES	
COA DECISION	
COA Compliance Notes	
COA Work Not Completed	
Work Not Requiring COA	



Work Completed Without COA	
-----------------------------------	--

PREPARER	Lara Ramsey	SURVEYDATE	10/29/2025
ORGANIZATION	RAMSEY HISTORIC CONSULTANTS	SURVEYAREA	NAPERVILLE SURVEY UPDATE

STREET #

DIRECTION

STREET

SUFFIX

PIN

LOCAL SIGNIFICANCE RATING

POTENTIAL IND NR? (Y or N)

Contributing to a NR DISTRICT?

Contributing secondary structure?

Listed on existing SURVEY?



GENERAL INFORMATION

CATEGORY HISTORIC FUNCTION

CONDITION REASON for SIGNIFICANCE

INTEGRITY

SECONDARY STRUCTURE

ARCHITECTURAL DESCRIPTION

ARCHITECTURAL CLASSIFICATION PLAN

DETAILS

BEGINYEAR NO OF STORIES

OTHER YEAR

ROOF TYPE

ROOF MATERIAL

FOUNDATIONSOURCE FOUNDATION

WALL MATERIAL (current) PORCH

WALL MATERIAL 2 (current) WINDOW MATERIAL

WALL MATERIAL (original) WINDOW MATERIAL

WALL MATERIAL 2 (original) WINDOW TYPE

WINDOW CONFIG

SIGNIFICANT FEATURES

ALTERATIONS

HISTORIC INFORMATION

HISTORIC NAME	
COMMON NAME	
ARCHITECT	
BUILDER	
ARCHITECT SOURCE	
HISTORIC INFO	
PERMITS	
LANDSCAPE	Midblock on west side of residential street; front sidewalk; side driveway; similar setbacks; mature trees
COA DATES	4/20/2020
COA DECISION	COA #20-832 -- in-kind shingle replacement (approved 4/23/2020)
COA Compliance Notes	
COA Work Not Completed	
Work Not Requiring COA	



Work Completed Without COA

PREPARER Lara Ramsey

SURVEYDATE 10/29/2025

ORGANIZATION RAMSEY HISTORIC CONSULTANTS

SURVEYAREA NAPERVILLE SURVEY UPDATE

STREET #

DIRECTION

STREET

SUFFIX

PIN

LOCAL SIGNIFICANCE RATING

POTENTIAL IND NR? (Y or N)

Contributing to a NR DISTRICT?

Contributing secondary structure?

Listed on existing SURVEY?



GENERAL INFORMATION

CATEGORY HISTORIC FUNCTION

CONDITION REASON for SIGNIFICANCE

INTEGRITY

SECONDARY STRUCTURE

ARCHITECTURAL DESCRIPTION

ARCHITECTURAL CLASSIFICATION PLAN

DETAILS

BEGINYEAR NO OF STORIES

OTHER YEAR ROOF TYPE

DATESOURCE ROOF MATERIAL

FOUNDATION

WALL MATERIAL (current) PORCH

WALL MATERIAL 2 (current)

WALL MATERIAL (original) WINDOW MATERIAL

WALL MATERIAL 2 (original)

WINDOW MATERIAL

WINDOW TYPE

WINDOW CONFIG

SIGNIFICANT FEATURES

ALTERATIONS

HISTORIC INFORMATION

HISTORIC NAME

COMMON NAME

ARCHITECT

BUILDER

ARCHITECT SOURCE

HISTORIC INFO According to owner & descendants, this house has been owned and occupied for many years by the Hammerschmidt family, a German farming family. Plaque says the family bought it in 1902. Family still owns the house.

PERMITS Sanborn maps indicate that the rear/north addition and enclosure/extension of S. porch occurred after 1943.

LANDSCAPE Midblock on east side of residential street; front sidewalk; similar setbacks; mature trees

COA DATES

COA DECISION

COA Compliance Notes

COA Work Not Completed

Work Not Requiring COA

PREPARER

SURVEYDATE

ORGANIZATION

SURVEYAREA



Work Completed Without COA

STREET #

DIRECTION

STREET

SUFFIX

PIN

LOCAL SIGNIFICANCE RATING

POTENTIAL IND NR? (Y or N)

Contributing to a NR DISTRICT?

Contributing secondary structure?

Listed on existing SURVEY?



GENERAL INFORMATION

CATEGORY HISTORIC FUNCTION

CONDITION REASON for SIGNIFICANCE

INTEGRITY

SECONDARY STRUCTURE

ARCHITECTURAL DESCRIPTION

ARCHITECTURAL CLASSIFICATION PLAN

DETAILS NO OF STORIES

BEGINYEAR ROOF TYPE

OTHER YEAR ROOF MATERIAL

DATESOURCE FOUNDATION

WALL MATERIAL (current) PORCH

WALL MATERIAL 2 (current) WINDOW MATERIAL

WALL MATERIAL (original) WINDOW MATERIAL

WALL MATERIAL 2 (original) WINDOW TYPE

WINDOW CONFIG

SIGNIFICANT FEATURES

ALTERATIONS

HISTORIC INFORMATION

HISTORIC NAME	
COMMON NAME	
ARCHITECT	
BUILDER	
ARCHITECT SOURCE	
HISTORIC INFO	
PERMITS	1898 Sanborn map (Sheet 3) shows 1.5 story NE corner porch and a second S. porch.
LANDSCAPE	Midblock on west side of residential street; front sidewalk; rear alley; similar setbacks; mature trees
COA DATES	
COA DECISION	
COA Compliance Notes	
COA Work Not Completed	
Work Not Requiring COA	



Work Completed Without COA

--

PREPARER	Lara Ramsey	SURVEYDATE	10/29/2025
ORGANIZATION	RAMSEY HISTORIC CONSULTANTS	SURVEYAREA	NAPERVILLE SURVEY UPDATE