

STREET # 014

DIRECTION S

STREET WASHINGTON

ABB STREET

PIN 0713420003

NUMBER OF STOREFRONTS N/A

Listed on existing SURVEY?
Naperville Downtown Walking Tour (Naper Settlement), Local Historic Structure Plaque (Naperville Heritage Society); NAPERVILLE HOME COMING 1917 (book)



GENERAL INFORMATION

CATEGORY building

CONDITION good

INTEGRITY minor alterations and addition(s)

CURRENT FUNCTION Social - clubhouse

HISTORIC FUNCTION Religion - religious facility

GENERAL COMMENTS
This charming Gothic Revival church building is a key building in Naperville's downtown.

ARCHITECTURAL DESCRIPTION

ARCHITECTURAL CLASSIFICATION Gothic Revival

DETAILS

BEGINYEAR 1899

OTHER YEAR

DATESOURCE Naperville Downtown Walking Tour

PLAN rectangular

NO OF STORIES 1

ROOF TYPE Front gable

ROOF MATERIAL Asphalt - shingle

FOUNDATION Stone

WALL MATERIAL (current) Stone

WALL MATERIAL 2 (current) Concrete block

WALL MATERIAL (original) Stone

WALL MATERIAL 2 (original)

WINDOW MATERIAL Wood

WINDOW MATERIAL Stained glass

WINDOW TYPE Fixed/double hung/pivot

WINDOW CONFIG 1/1; multi-light

SIGNIFICANT FEATURES
Stone exterior; front gable bay with pointed arch window on front façade; southwest square entry/bell tower with pyramidal roof and pointed arch 2nd story louvered openings; pointed arch entry; historic 1/1 wood windows in pointed arch openings on side elevations

ALTERATIONS
1-story south side addition (historic--1930s) with double hung pointed arch windows to mimic the windows on the north elevation; replacement front entry doors

STOREFRONT1 FEATURES N/A

**STOREFRONT1
ALTERATIONS**

N/A

HISTORIC INFORMATION

HISTORIC NAME	German Evangelical People's Church
COMMON NAME	Naperville Women's Club
COST	
ARCHITECT	
ARCHITECT2	
BUILDER	
ARCHITECT SOURCE	

HISTORIC INFO	The Womens Club has occupied the building since 1924. Building featured on page 408 of A GUIDE TO CHICAGO'S HISTORIC SUBURBS.
----------------------	---

PREPARER	Lara Ramsey
PREPARER ORGANIZATION	GRANACKI HISTORIC CONSULTANTS
SURVEYDATE	11/17/2010
SURVEYAREA	DOWNTOWN NAPERVILLE

DIGITAL PHOTO ID	\\images\Washingt onSt014S.jpg
DIGITAL PHOTO ID2	\\images\Washingt onSt014S (2).jpg
DIGITAL PHOTO ID3	\\images\Washingt onSt014S (3).jpg
DIGITAL PHOTO ID4	\\images\Washingt onSt014S (4).jpg



North elevation



West and north elevations



South elevation

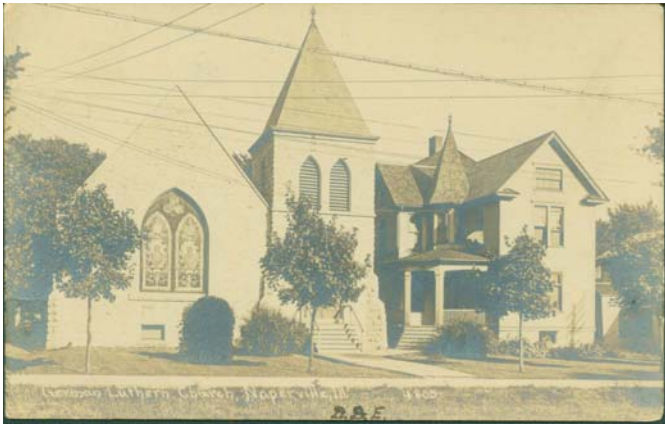
014	S	WASHINGTON	STREET
-----	---	------------	--------



Historic photograph of church in collections of Naper Settlement Research Library and Archives



Historic photograph of church from NAPERVILLE 1917



Historic photograph in collection of Naper Settlement Research Library and Archives

**DIGITAL
PHOTO ID5**

\\Images\Washingto
nSt014S
(historic).jpg

**DIGITAL
PHOTO ID7**

\\Images\Washingt
onSt014S
(historic 2).jpg

**DIGITAL
PHOTO ID6**

\\Images\Washingto
nSt014S
(Naperville

**DIGITAL
PHOTO ID8**

