

STREET #

DIRECTION

STREET

SUFFIX

PIN

LOCAL SIGNIFICANCE RATING

POTENTIAL IND NR? (Y or N)

Contributing to a NR DISTRICT?

Contributing secondary structure?

Listed on existing SURVEY?



GENERAL INFORMATION

CATEGORY HISTORIC FUNCTION

CONDITION REASON for SIGNIFICANCE

INTEGRITY

SECONDARY STRUCTURE

ARCHITECTURAL DESCRIPTION

ARCHITECTURAL CLASSIFICATION PLAN

DETAILS

BEGINYEAR NO OF STORIES

OTHER YEAR ROOF TYPE

DATESOURCE ROOF MATERIAL

FOUNDATION

WALL MATERIAL (current) PORCH

WALL MATERIAL 2 (current) WINDOW MATERIAL

WALL MATERIAL (original) WINDOW MATERIAL

WALL MATERIAL 2 (original)

WINDOW TYPE

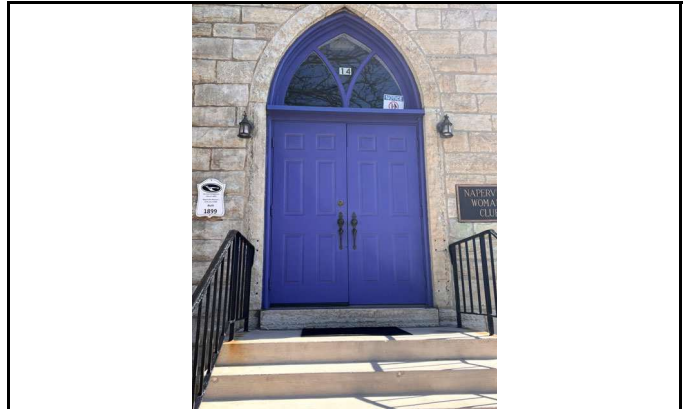
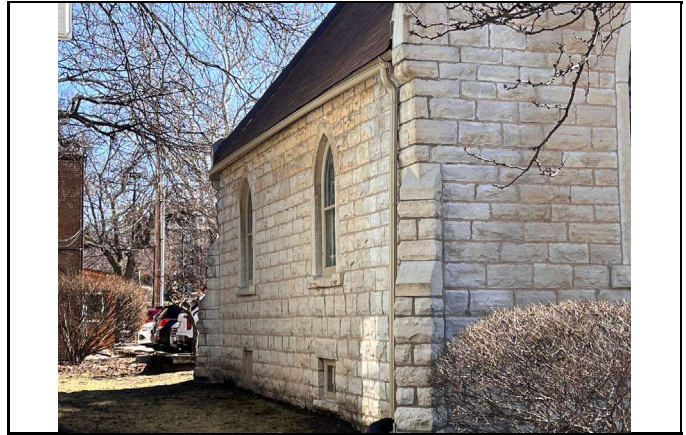
WINDOW CONFIG

SIGNIFICANT FEATURES

ALTERATIONS

HISTORIC INFORMATION

HISTORIC NAME	German Evangelical People's Church
COMMON NAME	Naperville Women's Club
ARCHITECT	
BUILDER	
ARCHITECT SOURCE	
HISTORIC INFO	See continuation sheet.
PERMITS	
LANDSCAPE	Midblock on east side of commercial street; front setback; vacant lot to south; front sidewalk; parking pad to rear
COA DATES	
COA DECISION	
COA Compliance Notes	
COA Work Not Completed	
Work Not Requiring COA	Bay window on rear elevation replaced with rear entry; concrete wheelchair ramp connecting new rear entry with parking lot



Work Completed Without COA	
-----------------------------------	--

PREPARER	Lara Ramsey	SURVEYDATE	3/12/2026
ORGANIZATION	RAMSEY HISTORIC CONSULTANTS	SURVEYAREA	NAPERVILLE SURVEY UPDATE

City of NAPERVILLE
2025 HISTORIC RESOURCES SURVEY UPDATE
CONTINUATION SHEET

STREET # 14

STREET S. WASHINGTON STREET

ADDITIONAL PHOTOS OR INFORMATION

Historic Information

This Gothic-Revival church building was constructed in 1899 to house the German Evangelical People's church, which had formed the previous year. A parsonage building was also constructed south of the church but was later demolished. The congregation began to decline in the 1910s and early 1920s, and in 1924 the church building was sold to the Naperville Women's Club, which continues to use the building as its headquarters.

The building has received a plaque from the Naperville Heritage Society (NHS) and was included in a walking tour brochure for Naperville's Downtown published by NHS in 2006.

The building was designated a local landmark in 2011. More detailed information on the property is available in the landmark report on the City of Naperville website:

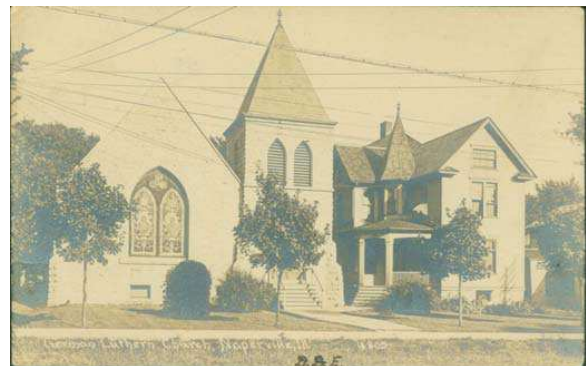
<https://www.naperville.il.us/about-naperville/historic-district/naperilles-local-landmarks/>

Historic Photographs

[from *Naperville 1917*]



[historic photo in collection of Naper Settlement Research Library and Archives]



STREET #

DIRECTION

STREET

SUFFIX

PIN

LOCAL SIGNIFICANCE RATING

POTENTIAL INDR? (Y or N)

Contributing to a NR DISTRICT?

Contributing secondary structure?

Listed on existing SURVEY?



GENERAL INFORMATION

CATEGORY HISTORIC FUNCTION

CONDITION REASON for SIGNIFICANCE

INTEGRITY

SECONDARY STRUCTURE

ARCHITECTURAL DESCRIPTION

ARCHITECTURAL CLASSIFICATION PLAN

DETAILS

BEGINYEAR NO OF STORIES

OTHER YEAR ROOF TYPE

DATESOURCE ROOF MATERIAL

FOUNDATION

WALL MATERIAL (current) PORCH

WALL MATERIAL 2 (current) WINDOW MATERIAL

WALL MATERIAL (original) WINDOW MATERIAL

WALL MATERIAL 2 (original) WINDOW TYPE

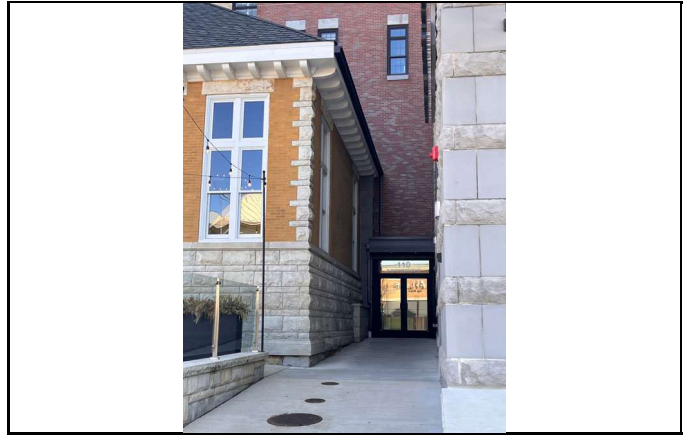
WINDOW CONFIG

SIGNIFICANT FEATURES

ALTERATIONS

HISTORIC INFORMATION

HISTORIC NAME	Nichols Library
COMMON NAME	Central Park Place
ARCHITECT	Bell, Mifflin Emlin
BUILDER	Enck, Alvin
ARCHITECT SOURCE	Naperville Walking Tour
HISTORIC INFO	See continuation sheet.
PERMITS	
LANDSCAPE	Midblock on east side of commercial street; front sidewalk; substantial front setback, with raised patio area fronting building; greenspace north of building with "Veteran's Valor" memorial; paved walkway along south side of building connecting to residential entrance.
COA DATES	12/18/2017; 5/1/2018
COA DECISION	See continuation sheet.
COA Compliance Notes	See continuation sheet.
COA Work Not Completed	
Work Not Requiring COA	



Work Completed Without COA	
-----------------------------------	--

PREPARER	Lara Ramsey	SURVEYDATE	3/12/2026
ORGANIZATION	RAMSEY HISTORIC CONSULTANTS	SURVEYAREA	NAPERVILLE SURVEY UPDATE

City of NAPERVILLE
2025 HISTORIC RESOURCES SURVEY UPDATE
CONTINUATION SHEET

STREET # 110

STREET S. WASHINGTON STREET

ADDITIONAL PHOTOS OR INFORMATION

Historic Information

The Nichols Library was named for James L. Nichols, a professor and author who bequeathed \$10,000 to the city after his death to establish the city's first public library. Architect M. E. Bell was the supervising architect on the U.S. Treasury Department Building and planner of Wheaton's first courthouse. The city retained ownership of the building until 1996.

COA Decisions

- COA #17-5146 -- demolition of 1962 addition (approved by HPC 1/25/2018)
- COA # 18-1430 -- alterations to existing building, including tuckpointing and masonry repair, repairs to wood fascia and soffits, replacement of existing roof, replacement of existing windows with like-style windows, replacement of main entry door with replica door unit, and reconstruction of main entry steps; four-story mixed-use addition with street-level retail space and 21 residential units.

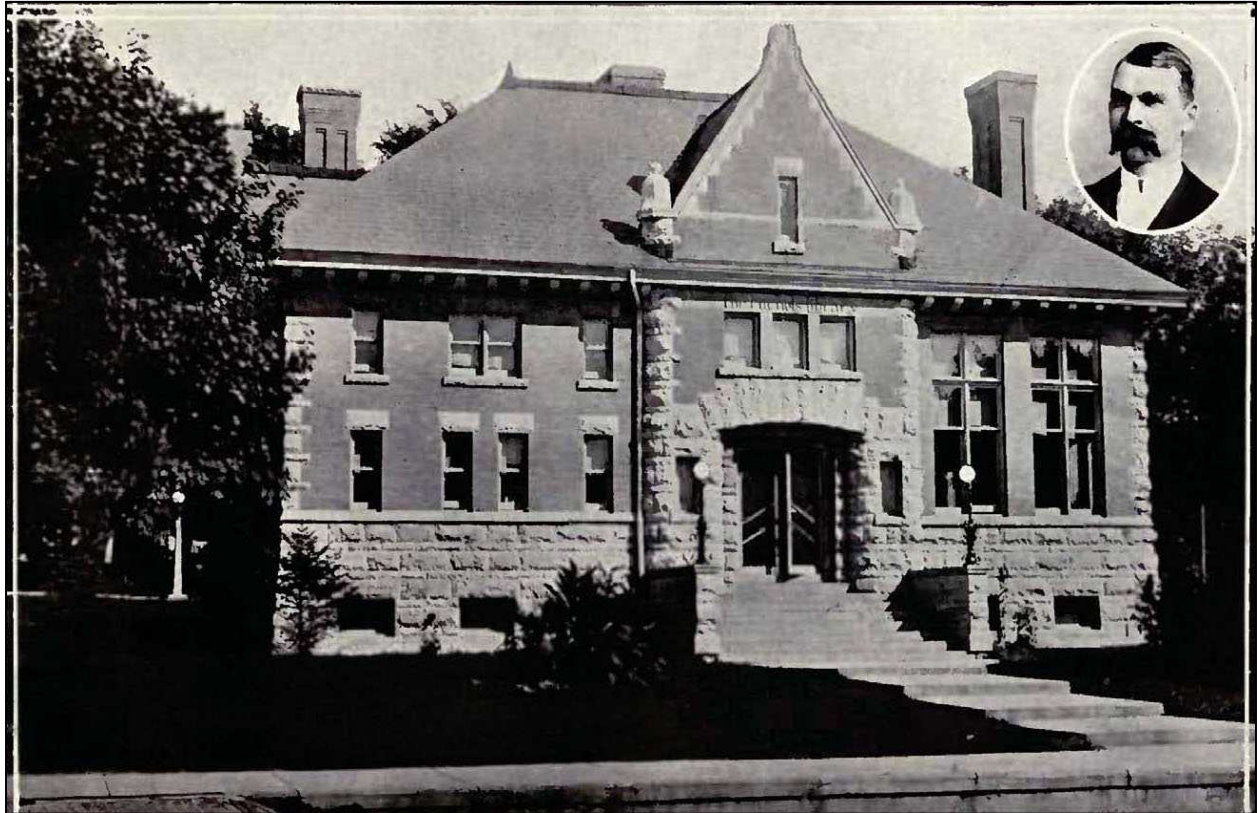
COA Compliance Notes

Based on observations of surveyor from the public way, the work largely conforms to renderings provided by HPC, with some exceptions. The replacement front doors are narrower than those shown in the rendering; paving material on front patio also varies from rendering.

No detailed information on specific requirements for window replacement included in COA files. Although the replacement windows appear to conform to the renderings included with the approved COA, the proportion of replacement windows in the large openings at the south end of the façade and the south elevation differ from the original windows; glazing area on double-hung windows on the remainder of the front façade and the north elevation also appear to be reduced.

Historic Photographs

[from *Naperville 1917*]



STREET #

DIRECTION

STREET

SUFFIX

PIN

LOCAL SIGNIFICANCE RATING

POTENTIAL IND NR? (Y or N)

Contributing to a NR DISTRICT?

Contributing secondary structure?

Listed on existing SURVEY?



GENERAL INFORMATION

CATEGORY HISTORIC FUNCTION

CONDITION REASON for SIGNIFICANCE

INTEGRITY

SECONDARY STRUCTURE

ARCHITECTURAL DESCRIPTION

ARCHITECTURAL CLASSIFICATION PLAN

DETAILS NO OF STORIES

BEGINYEAR ROOF TYPE

OTHER YEAR

ROOF MATERIAL

DATE SOURCE FOUNDATION

WALL MATERIAL (current) PORCH

WALL MATERIAL 2 (current) WINDOW MATERIAL

WALL MATERIAL (original) WINDOW MATERIAL

WALL MATERIAL 2 (original) WINDOW TYPE

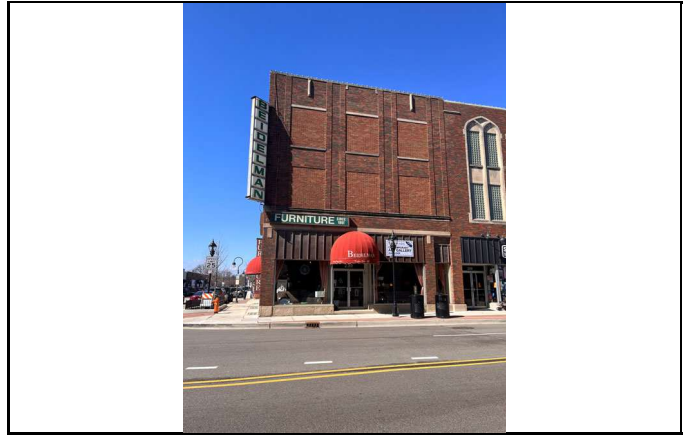
WINDOW CONFIG

SIGNIFICANT FEATURES

ALTERATIONS

HISTORIC INFORMATION

HISTORIC NAME	Beidelman Furniture
COMMON NAME	Beidelman Furniture/Standard Goods
ARCHITECT	Bentz, Irving E.
BUILDER	Bentz, John
ARCHITECT SOURCE	Landmark Report
HISTORIC INFO	See continuation sheet.
PERMITS	
LANDSCAPE	Northwest corner of Washington Street and Jackson Avenue; building constructed to lot line; east and south sidewalks
COA DATES	
COA DECISION	
COA Compliance Notes	
COA Work Not Completed	
Work Not Requiring COA	



Work Completed Without COA	
-----------------------------------	--

PREPARER Lara Ramsey

SURVEYDATE 3/12/2026

ORGANIZATION RAMSEY HISTORIC CONSULTANTS

SURVEYAREA NAPERVILLE SURVEY UPDATE

City of NAPERVILLE
2025 HISTORIC RESOURCES SURVEY UPDATE
CONTINUATION SHEET

STREET # 235-239

STREET S. WASHINGTON STREET

ADDITIONAL PHOTOS OR INFORMATION

Alterations

All upper windows at south section of building have been filled in with brick—landmark report indicates that the original windows remain behind the brick; signage (Beidelman) likely dates from the early 1960s; second-story entry at north end of east elevation changed to display window in downsized opening; original cornice removed; pointed-arch windows at north end of east elevation and on north elevation filled with glass block; original pointed-arch opening to funeral home and chapel replaced with flush storefront with south end entry and aluminum at sign level (early 1960s); most window openings on north elevation are covered; brick exterior of 1860s Jackson Ave. building is painted.

Post-2007 -- no changes

Historic Information

Beidelman Furniture traces its origins to the establishment of a furniture and undertaking business by Frederick Long (1837-1912). Long constructed a two-story frame building for his business at the northwest corner of Washington Street and Jackson Avenue in the early 1860s. Long's nephew Oliver J. Beidelman, Sr. (1877-1967) began working at the business in the 1890s and purchased it from Long in 1911. In the late 1920s, Beidelman replaced much of the original frame building with a three-story Gothic-Revival commercial block; the west end of the original building along Jackson Avenue, called "the workshop," was retained and internally connected to the new building. Sanborn maps indicated that the workshop had been faced with brick between 1898 and 1909.

In the late 19th century, the building was also home to the Naperville Lounge Company, which later became the Kroehler Manufacturing Company. Peter Kroehler, an employee with the company, purchased the company from Frederick Long and his partners in 1896; the business moved to a larger facility the following year.

After Oliver Beidelman's death in 1967, Beidelman furniture continued operation at the Washington Street location under the Beidelman family. In early 2026, the family announced that Beidelman Furniture would close at the end of April.

The building was designated a local landmark in 2024. More detailed information on the property is available in the landmark report on the City of Naperville website:

<https://www.naperville.il.us/about-naperville/historic-district/napervilles-local-landmarks/>

Historic Photographs

[from landmark report]



Beidelman Building 1929—Beidelman Family Archive



*Photograph from page 18 of "Landmarks in Naperville" by Lester Schader—Illinois Digital Archives
The photograph shows the 1928 Beidelman Furniture store as well as its adjoined 19th century building often referred to as the "workshop". The photograph is circa 1960. The corner sign has not yet been added nor the rooflines redone. The "workshop" at this time is pictured on the left with the "glass" sign.*