



Chicago

Technical Assistance Panels

2025



Why ULI Technical Assistance Panels?

Holistic Approach

- Multi-disciplinary panels provide expertise in all aspects of development by including developers, lenders, designers, engineers, market analysts & other experts

Implementable, Market-Based Solutions

- Near-term actions and longer-term strategies grounded in market realities

Unbiased Advice

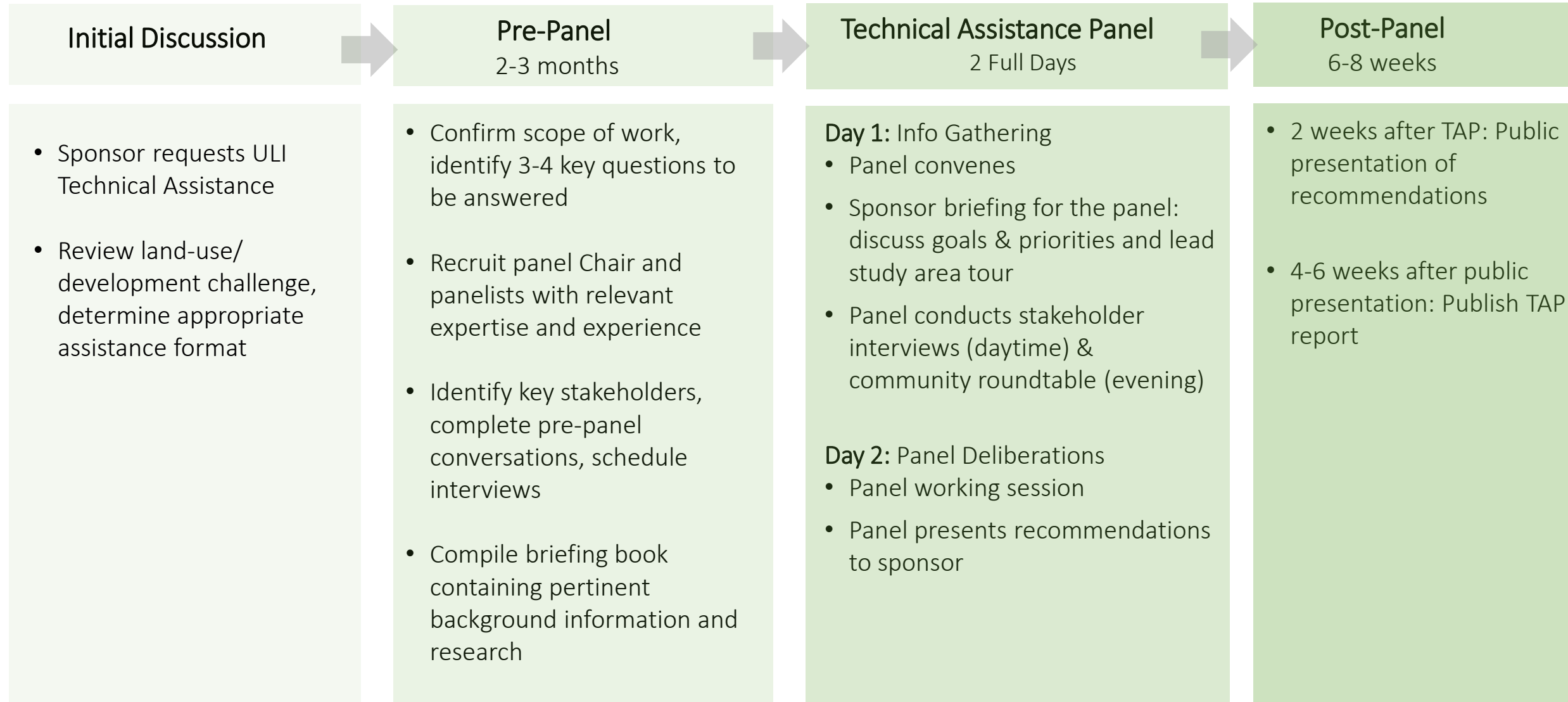
- Panelists volunteer their time and sign no-conflict statements

Global Perspective

- ULI members and ULI research draw on best practices from across the country and the globe



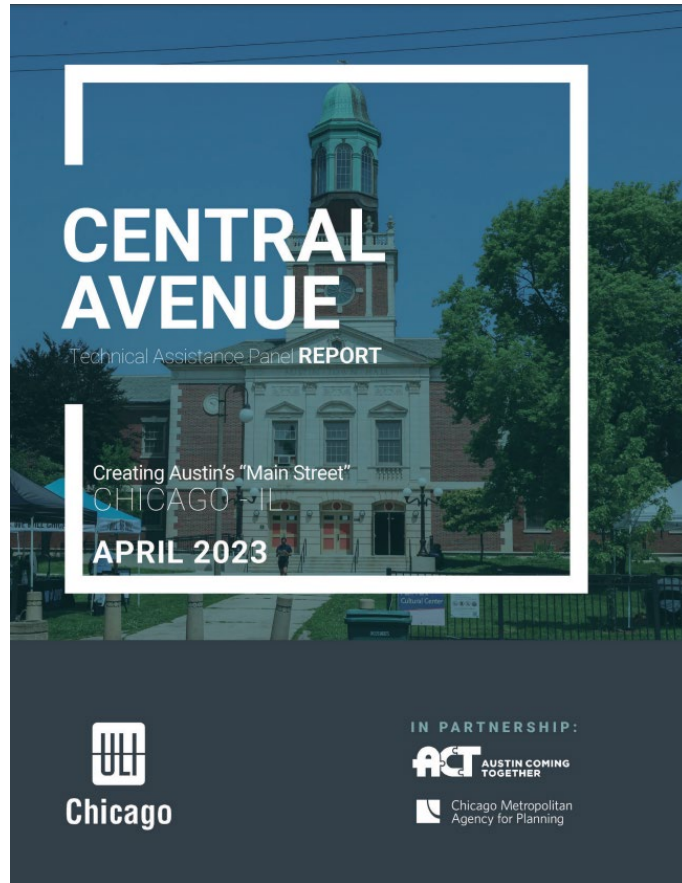
The Technical Assistance Panel (TAP) Process



Key Features of ULI Technical Assistance Panels

- Volunteer panel of 10-12 industry experts from the Chicago region
 - Local knowledge, global perspective
 - Panelists cannot have “direct interest” in the study area, all panelists sign a “no-conflict” statement
- Access to national/global ULI resources
- In-person panel conducted over 2 days (7:30 am-6 pm)
- Post-panel follow up at 1 month, 6-month and 12-month intervals
- Lead Time: Approx. 3 months

Examples of Local Panels in Chicago



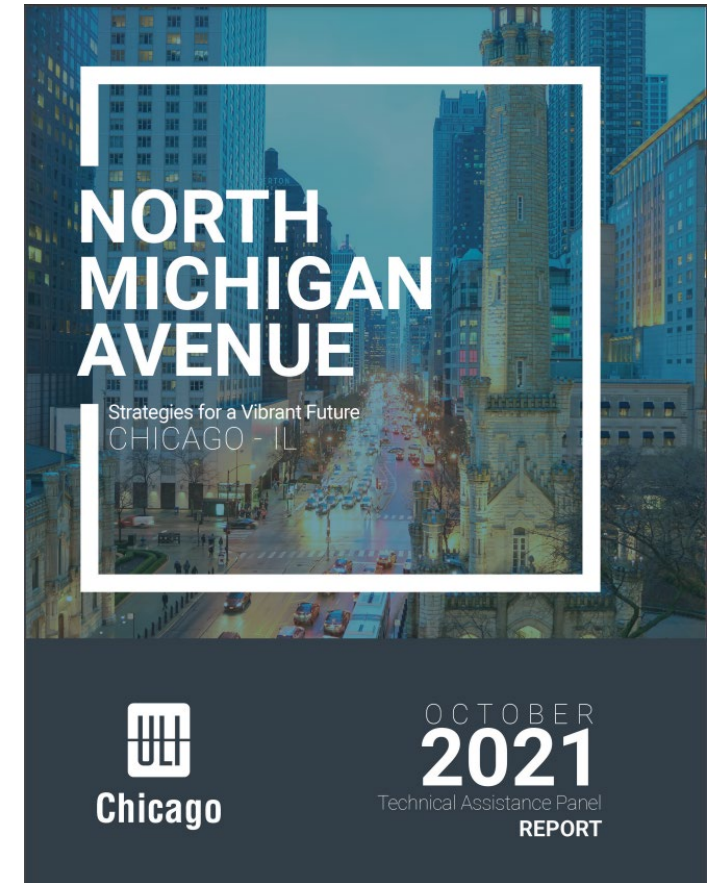
- Completed in 2023
- Study Area. **Central Avenue**, Chicago Ave. to I-290

[Download Report](#)



- Completed in 2022
- Study Area. **LaSalle Street** in downtown Chicago

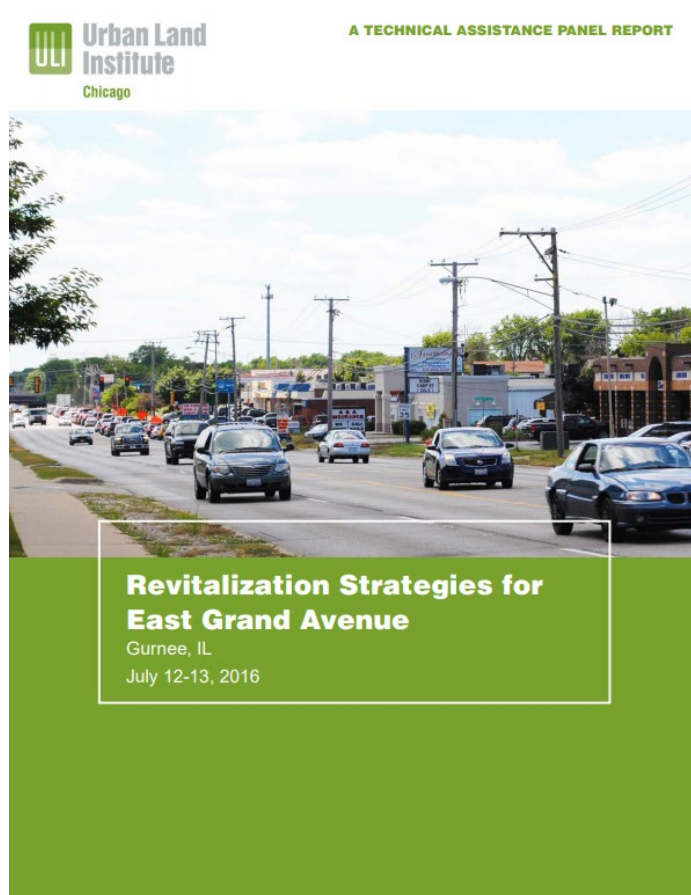
[Download Report](#)



- Completed in 2021
- Study Area. **North Michigan Avenue**

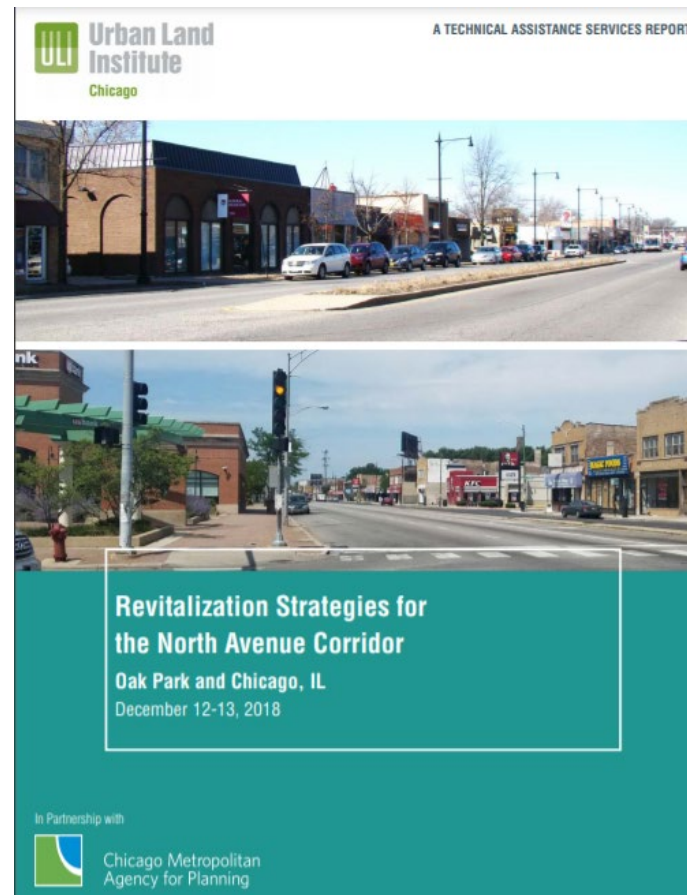
[Download Report](#)

Examples of Local Panels in Chicago



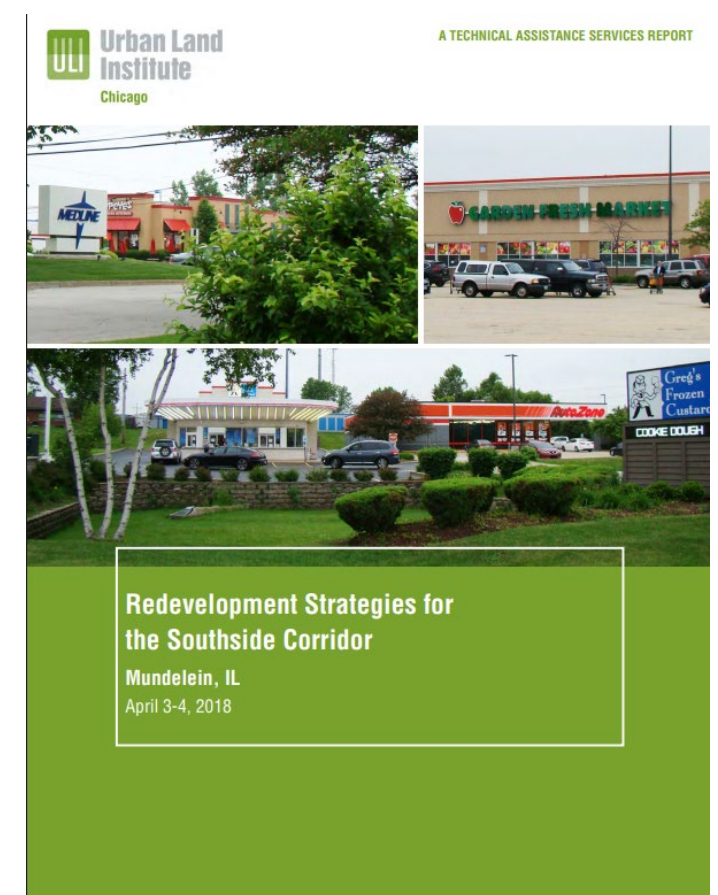
- Completed in 2016
- Study Area. **½ mile stretch of East Grand Avenue (IL Route 132)** between U. S. Route 41 and the City of Waukegan

[Download Report](#)



- Completed in 2018
- Study Area. **1.6 mile stretch of North Avenue** from Harlem Avenue to Austin Boulevard

[Download Report](#)



- Completed in 2018
- Study Area. **1.2 mile stretch of Townline Road (IL Route 60)** between Butterfield Road and IL Route 83

[Download Report](#)



Chicago



Thank you!